



**VMware**

# **VCPC610**

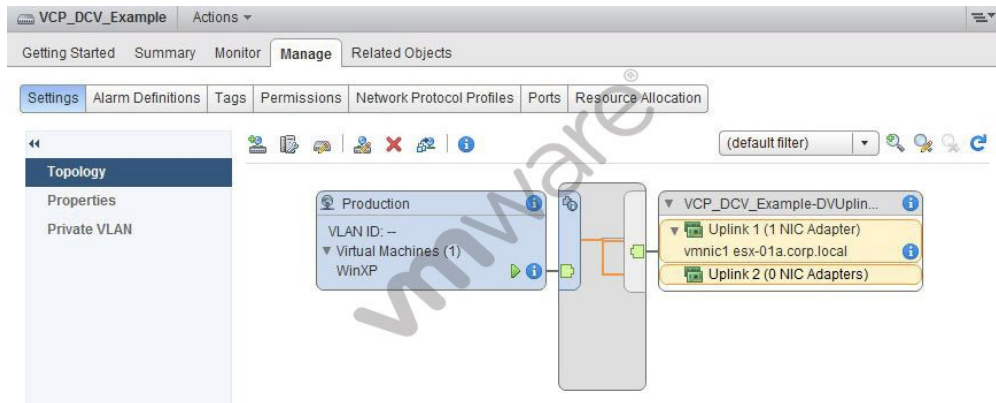
*VMware Certified Professional 6 - Cloud*

D. IP 10.10.10.50, Port 50000

**Answer: B**

**QUESTION: 107**

Refer to the exhibit.



The WinXP virtual machine user reports intermittent connectivity to the corporate network. The exhibit shows the current configuration.

The configuration is as follows:

- ☞ This virtual machine runs in a DRS/HA cluster of two hosts.
- ☞ The VCP\_DCV\_Example vSphere Distributed Switch was recently created.
- ☞ The WinXP virtual machine was recently migrated from another vSphere Distributed Switch.
- ☞ The WinXP virtual machine was able to connect prior to migration to this switch.
- ☞ No changes to the VCP\_DCV\_Example switch have been made since creation.

Which step should the administrator take to resolve the WinXP virtual machine's intermittent connectivity to the corporate network?

- A. Add the ESXi host to the switch where the virtual machine is currently running
- B. Disable Port Blocking on the VCP\_DCV\_Example switch
- C. Disable Port Blocking on the Production port group
- D. Enable Network I/O Control on the switch to better balance I/O

**Answer: A**

**QUESTION: 108**

When an Organization was configured a month ago, the runtime lease was set to

never expire and the storage lease was set to two days. The vApp was shut down by the user seven days ago and is no longer available. What are two reasons the VM is no longer visible to the user? (Choose two.)

- A. The vApp was moved to expired items.
- B. The vApp was archived.
- C. The vApp was disabled.
- D. The vApp was deleted.

**Answer:** A, D

**QUESTION:** 109

Which appliance is required to deploy VXLAN?

- A. NSX Manager
- B. vCloud Director
- C. vCenter Server
- D. vCloud Connector

**Answer:** A

**QUESTION:** 110

Which two roles have permission to manage the presentation of catalog items to the consumer and entitle new items to consumers? (Choose two.)

- A. Tenant Administrator
- B. Service Architect
- C. Support User
- D. Business Group Manager

**Answer:** A, D

**QUESTION:** 111

During a physical network reconfiguration, an ESXi host briefly lost connection to the management network. High Availability (HA) began powering off the virtual machines residing on the affected host to be restarted on an unaffected host in the cluster. Which setting should the administrator configure to prevent this type of HA failover during planned maintenance?

- A. Host isolation response
- B. Host monitoring
- C. VM monitoring
- D. Admission control

**Answer:** B

**QUESTION:** 112

A Pay-As-You-Go Organization vDC just ran out of resources. The resource pool backing the Provider vDC is fully consumed, but the cluster has no more resources to spare and is at its maximum size. Which two actions should the administrator perform to allocate more resources to the Organization vDC? (Choose two.)

- A. Change the setting on the resource pool backing the Provider vDC to Unlimited.
- B. Add a second cluster to the Provider vDC.
- C. Add a resource pool to the Provider vDC from another cluster.
- D. Add another Organization vDC backed by a different Provider vDC to the Organization.

**Answer:** C, D

**QUESTION:** 113

Which two fields are required when creating a new property definition in the Property Dictionary? (Choose two.)

- A. Display Name
- B. Description
- C. Property Attributes
- D. Control Type

**Answer:** A, D

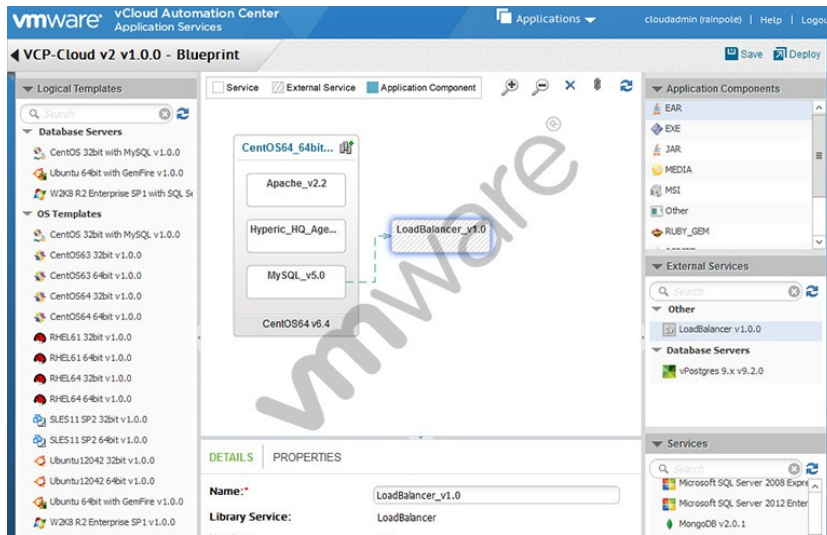
**QUESTION:** 114

Which feature of a vSphere Distributed Switch should the administrator use to gather the needed information?

- A. NetFlow
- B. Port Mirroring
- C. Network I/O Control
- D. Promiscuous Mode

**Answer:** A

**QUESTION: 115**  
Refer to the exhibit.



During application deployment, the load balancer is not being configured correctly, as shown in the exhibit. What could be done to resolve the issue?

- A. Change the direction of the dependency.
- B. Remove the dependency.
- C. Add an External Service component to configure the load balancer.
- D. Move the dependency to the Hyperic Agent.

**Answer:** A

**QUESTION: 116**

An administrator is using vCenter Operations Manager to monitor an environment and discovers that the Risk badge score has decreased since the last time it was checked. What condition would explain this change?

- A. The Time Remaining badge has decreased from 65 to 45.
- B. The Workload badge has decreased from 75 to 50.
- C. The Capacity Remaining badge has decreased from 80 to 50.
- D. The Stress badge has decreased from 70 to 40.

**Answer:** D

**QUESTION:** 117

Immediately after installing an ESXi host, an administrator needs to examine the following log files:

- ☞ /var/log/hostd.log
- ☞ /var/log/vmkernel.log
- ☞ /var/log/vpxa.log

Which two techniques could an administrator use to examine these files? (Choose two.)

- A. Using the Direct Console User Interface
- B. Attaching a vSphere Client directly to the ESXi host
- C. Attaching the vSphere Web Client directly to the ESXi host
- D. Attaching the vSphere Client to the vCenter Server

**Answer:** A, B

**QUESTION:** 118

An application team is implementing a new solution in a vSphere environment. The vendor states the application is memory intensive. The application is very unstable when operating without adequate on-demand access to physical memory. The application's virtual machines have been assigned to the Mission Critical resource pool. Which resource pool setting will help ensure the application has adequate access to memory?

- A. Memory reservation
- B. High memory share value
- C. Unlimited memory
- D. Expandable reservation

**Answer:** A

**QUESTION:** 119

An administrator is deploying vSphere 5.5. The administrator creates a vSphere Distributed Switch, then uses Auto Deploy to deploy several ESXi hosts. After the hosts are deployed, the administrator notices that LACP packets are not being sent between them. Which condition would cause this issue to occur?

- A. The LACP support settings do not exist in the Host Profile.
- B. The LACP installation bundle is not included in the Image Profile.
- C. LACP is not enabled on vCenter.
- D. LACP has not been configured on the Auto Deploy server.

**Answer:** A

**QUESTION:** 120

Which feature requires an administrator using an RDM to configure it with virtual compatibility mode?

- A. vMotion
- B. Virtual Machine Snapshots
- C. High Availability
- D. N-port ID Virtualization

**Answer:** B

**QUESTION:** 121

An administrator needs to deploy several virtual machines. Storage contention between the virtual machines should be managed by the VMkernel. Some of the virtual machines will use MSCS and should be highly available across the ESXi 5.5 hosts. Which two storage options meet these requirements? (Choose two.)

- A. iSCSI
- B. NFS
- C. Fibre Channel
- D. VSAN

**Answer:** A C

Download Full Version From <https://www.certkillers.net>



**DON'T KNOW**  
OR NO PREFERENCE

*Pass your exam at First Attempt....Guaranteed!*