



VMware

VCP510PSE

VMware Certified Professional on vSphere 5

Answer: D

QUESTION: 302

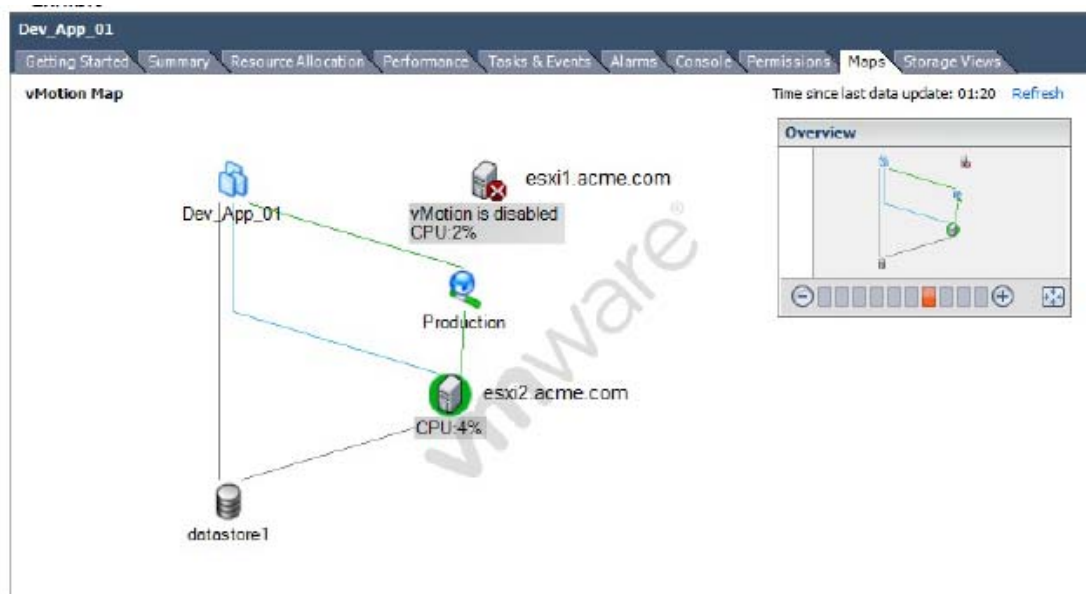
Which resource management technique can be used to relieve a network bottleneck caused by a virtual machine with occasional high outbound network activity?

- A. Convert the switch from a vNetwork Standard Switch to a vNetwork Distributed Switch.
- B. Create a new portgroup for the virtual machine and enable traffic shaping.
- C. Apply traffic shaping to the virtual machine with high activity.
- D. Apply traffic shaping to the other virtual machines in the same portgroup.

Answer: B

QUESTION: 303

-- Exhibit --



-- Exhibit --

Click the Exhibit button.

An administrator is configuring vMotion in their environment. As part of the implementation, an administrator is examining resource mapping for virtual machines. What is a likely cause of the error shown in the exhibit?

- A. vMotion has not been enabled on a VMkernel portgroup.
- B. The administrator has not created a Management network.
- C. vMotion has not been enabled on the Production portgroup.
- D. vMotion has been disabled because there are no other hosts in the cluster with vMotion enabled.

Answer: A

QUESTION: 304

Which two methods can be used to improve the vMotion migration speed of a virtual machine? (Choose two.)

- A. Enable High priority on the virtual machine before starting vMotion.
- B. Lower the memory reservation for the virtual machine.
- C. Ensure the cluster has the default Swapfile Policy set.
- D. Select High priority during the migration wizard.

Answer: C, D

QUESTION: 305

An administrator is upgrading an ESX 3.5 host to ESXi 5.x with an intermediate upgrade to ESX 4.0 using Update Manager. The host has a single Intel Xeon processor, 4GB of RAM, and a VMFS datastore on a private, SAN-attached LUN. What might cause the upgrade to be unsuccessful?

- A. Update Manager does not support upgrading from ESX.
- B. The host has one processor.
- C. The host has 4GB RAM.
- D. ESX 3.5 is not supported by Update Manager.

Answer: D

QUESTION: 306

An administrator decides to use Data Recovery to back up some key virtual machines. What is the process to install Data Recovery?

- A. Download the vmdk and vmx files from VMware.com and copy to a datastore. Right-click the vmx file and select Add to Inventory.
- B. Download the .exe from VMware.com and run from the vSphere Client machine.
- C. Use the vCenter Installer from the original vCenter media and select "vSphere Data Recovery".
- D. Download OVF from VMware.com onto the vSphere Client machine and use Deploy OVF Template.

Answer: D

QUESTION: 307

In a vSphere HA cluster what is the maximum number of point-to-point communication links to the slaves each master maintains?

- A. 32
- B. 64
- C. 512
- D. 1024

Answer: A

QUESTION: 308

Which are three use cases for vSphere Fault Tolerance? (Choose three.)

- A. Provide guaranteed reliability for a legacy Windows NT virtual machine
- B. Provide efficient scheduled reliability for a payroll virtual machine
- C. Guarantee up-time for a virtual machine - VMFILE01 with a 4GB RDM
- D. Ensure up-time for a Linux virtual machine without making any changes to the OS
- E. Provide guaranteed reliability for a development virtual machine with scheduled snapshots

Answer: A, B, D

QUESTION: 309

Which two statements are true about VLANs and portgroups defined on a vSphere Standard Switch? (Choose two.)

- A. A VLAN can be accessed by the entire virtual switch or individual portgroups.
- B. VLANs can be configured only on individual portgroups.
- C. Multiple portgroups are restricted from accessing the same VLAN.
- D. Multiple VLANs can be accessed by virtual machines connected to one portgroup.

Answer: A, D

QUESTION: 310

What is the default VFAT scratch partition size for ESXi 5.x?

- A. 4GB
- B. 600MB
- C. 544MB
- D. None

Answer: A

QUESTION: 311

The VMware vCenter Server Appliance offers many features of the Windows application version. Which of the following features is only available on the Windows application version of vCenter?

- A. Host Profiles
- B. Template and clone customization
- C. Active Directory authentication
- D. Linked Mode

Answer: D

QUESTION: 312

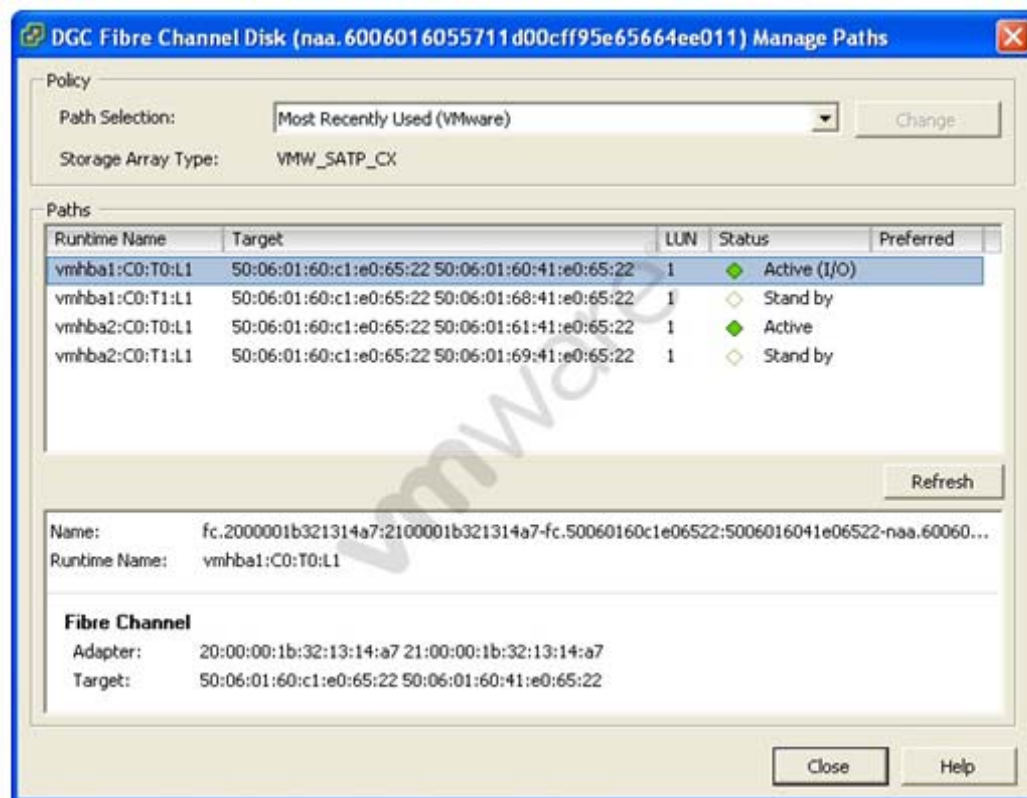
A vSphere Standard Switch has been configured for IP-based load balancing using two uplinks. A new uplink is added to the vswitch. What additional configuration is required by default?

- A. The uplink is placed in standby mode until it is added to the active NIC team.
- B. The uplink is considered active, but it will not participate in the active NIC team until assigned to a port group.
- C. The physical switch must add the new port to the existing 802.3ad group.
- D. The uplink is automatically marked as unused when it is added to IP-based NIC team.

Answer: C

QUESTION: 313

Click the Exhibit button.



Based on the exhibit, what is the reason that two of the paths are marked as standby?

- A. The other two paths were set to active.
- B. That is a characteristic of the storage array used.
- C. The active paths were set to preferred.
- D. The storage adapters need to be rescanned before those paths will be set to active.

Answer: B

QUESTION: 314

Creating which of the following optional partitions would change the default partition size for /?

- A. /tmp
- B. /home
- C. /var/log
- D. /usr

Answer: D

QUESTION: 315

Additional licensing is required once the number of cores per CPU reaches which of the following?

- A. 16 or more cores
- B. 12 or more cores
- C. 8 or more cores
- D. 6 or more cores

Answer: C

QUESTION: 316

What is the maximum number of cores that can be used with Standard licensing?

- A. 8
- B. 16
- C. 12
- D. 6

Answer: D

QUESTION: 317

During peak operating hours, an Administrator finds that a business critical application is not performing as well as during normal hours. Which of the following memory management methods could be used to guarantee the application performs well at all times?

- A. Set a Reservation equal to the Average Memory utilization of the virtual machine running the application
- B. Set the Share level to High for the virtual machine running the application and set all other virtual machines to Low
- C. Set a Limit equal to the Peak Memory utilization of the virtual machine running the application
- D. Set a Reservation equal to the Configured Memory of the virtual machine running the application

Answer: D

QUESTION: 318

What is a function of the vmxmemctl driver?

- A. reclaims unused memory from the guest OS
- B. allows the operation of unsupported guest OS types
- C. enables transparent page sharing
- D. enables swapping of the virtual machines

Answer: A

Download Full Version From <https://www.certkillers.net>



DON'T KNOW
OR NO PREFERENCE

Pass your exam at First Attempt....Guaranteed!