



**VMware**

# VCP-511

*VMware Certified Professional on vSphere 5 (Private Beta)*

in RAM. A virtual machine running completely in RAM performs better than a virtual machine that must swap some of its memory to disk.

**QUESTION:** 243

When creating a dvport group, which port binding option assigns a port to a virtual machine when the machine is connected to the dvPort Group?

- A. Static binding
- B. Flexible
- C. Ephemeral
- D. Dynamic binding

**Answer:** D

**Explanation:**

vSphere4 Documentation Notes vReference.com Version 1.0 Page 1  
forbesguthrie@vReference.com Main Documentation Set, page 15. dvPort group properties include:

Port Binding - when ports are assigned to virtual machines connected to this dvPort group. Static binding - to assign a port to a virtual machine when the virtual machine is connected to the dvPort group. Dynamic binding - to assign a port to a virtual machine the first time the virtual machine powers on after it is connected to the dvPort group. Ephemeral - for no port binding.

**QUESTION:** 244

Which two components must be modified to enable jumbo frames support for the software iSCSI initiator? (Choose two.)

- A. The virtual switch
- B. The virtual machine port group
- C. The iSCSI vmhba
- D. The VMkernel port

**Answer:** A, D

**Explanation:**

iSCSI SAN Configuration Guide ESX 4.0 ESXi 4.0 vCenter Server 4.0, page 30. If needed, enable Jumbo Frames. Jumbo Frames must be enabled for each vSwitch through the vSphere CLI. Also, if you use an ESX host, you must create a VMkernel network interface enabled with Jumbo Frames.

**QUESTION:** 245

A virtual machine performance graph shows the swap in value to be at 95 percent and the balloon value to be at 0 percent. Users of the virtual machines are complaining that performance is slow. Which actions can be done to increase performance of the virtual machine? (Choose two)

- A. Use Storage vMotion to migrate the virtual machine
- B. Change the memory share value for this virtual machine to another datastore
- C. Install VMware Tools into this virtual machine to high
- D. Change the CPU share value for virtual machine to high

**Answer:** B, D

**QUESTION:** 246

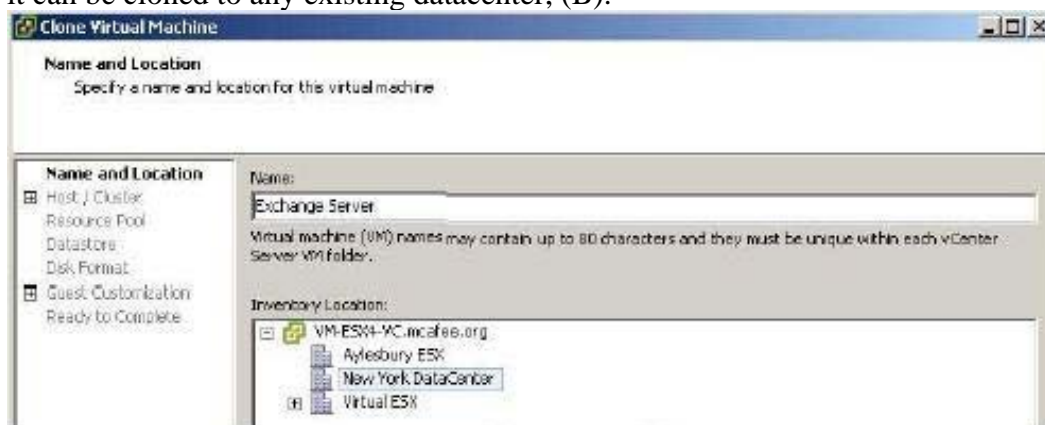
Which action can be successfully performed when multiple data centers are configured in vCenter Server?

- A. Virtual machines can be failed over to another datacenter (using HA)
- B. Virtual machines can exist on hosts in a DRS cluster that spans datacenters
- C. Virtual machines in one datacenter can be cloned to another datacenter
- D. Virtual machines in one datacenter can be migrated with vMotion to another datacenter

**Answer:** C

**Explanation:**

The screen shot below shows that when a Virtual Machines in one datacenter is cloned, it can be cloned to any existing datacenter, (B).



**QUESTION:** 247

An administrator plans to deploy ESXi 5.x. but does not want to use a CD or DVD. What are two alternate ways to provide the ESXi 5.x installer to the host? (Choose two)

- A. PXE
- B. FTP
- C. HTTP
- D. USB

**Answer:** B, C

**QUESTION:** 248

Which two configuration settings can be modified when using the Typical option in the Create New Virtual Machine wizard? (Choose two)

- A. Network Adapter type
- B. Datastore on which to place the virtual machine disks
- C. Disk Provisioning type
- D. Number of Virtual CPUs

**Answer:** B, C

**Reference:**

<http://pubs.vmware.com/vsphere-50/topic/com.vmware.ICbase/PDF/vsphere-esxi-vcenter-server-50-virtual-machine-admin-guide.pdf> (page 32, the last bulleted point on the page; page 33, second bulleted point at the very top of the page)

**QUESTION:** 249

An administrator has just completed an upgrade of an ESXi 5.x host. Prior to the upgrade, a backup of the host configuration was performed. After the upgrade the backup was restored to the upgraded host. Shortly the administrator receives complaints that users are unable to power on virtual machines. What are two most likely reasons that VMs cannot power up on this host? (Choose two)

- A. The ESXi host had a corrupt installation that was never properly repaired before the backup was taken.
- B. The backup applied to the host after the upgrade was taken before the host was licenced.
- C. The backup applied to the host after the upgrade corrupted the image.
- D. The host was not licenced after the upgrade.

**Answer:** C, D

**QUESTION: 250**

How are new LUNs discovered by an ESXi host?

- A. A rescan operation is periodically performed by ESXi hosts to detect new LUNs.
- B. A reboot operation is required every time a LUN is added.
- C. A manual rescan operation is required every time a LUN is added.
- D. ESXi hosts automatically detect new LUNs as they are presented.

**Answer: B**

**Explanation:**

iSCSI SAN Configuration Guide, page 26. The VMkernel discovers LUNs when it boots, and those LUNs are then visible in the vSphere Client. If changes are made to the LUNs, you must rescan to see those changes. New LUNs created on the iSCSI storage Changes to LUN access control Changes in connectivity

**QUESTION: 251**

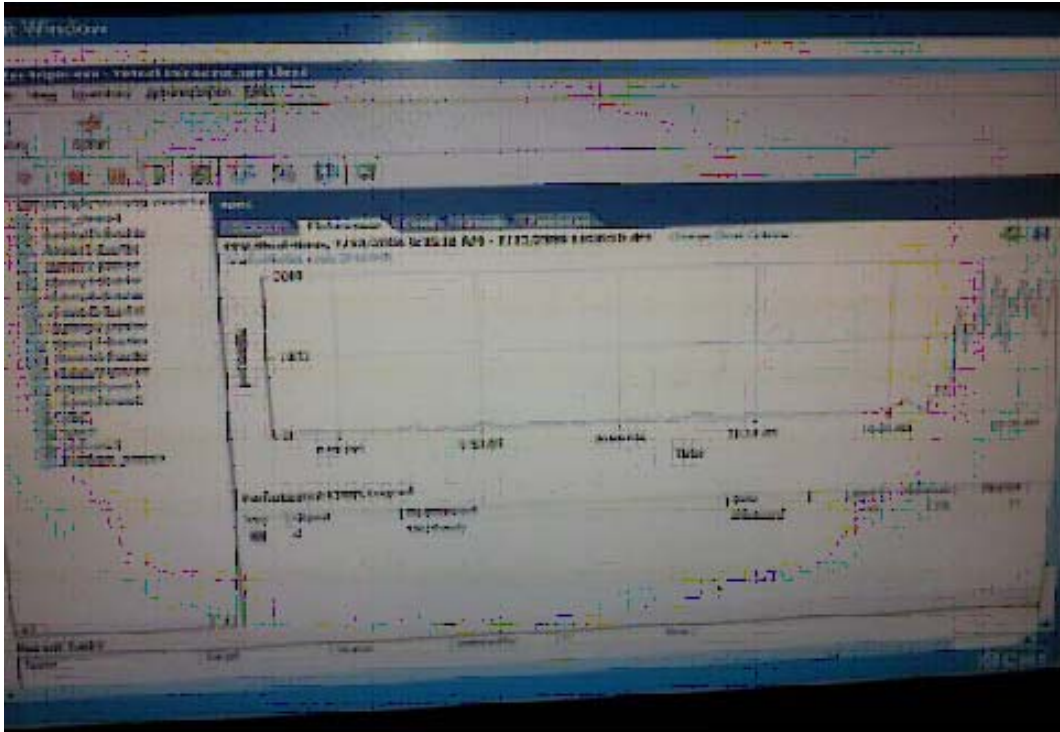
Which two vCenter plug-ins are installed with a default vCenter Server installation ?  
(Choose two)

- A. VMware vCenter Data Recovery
- B. VMware vCenter Service Status
- C. VMware vSphere Update Manager
- D. VMware vCenter Storage Monitoring

**Answer: B, D**

**QUESTION: 252**

Click the Exhibit button



Which change will eliminate the symptom in the performance chart shown in the exhibit?

- A. Increase CPU limit
- B. Increase CPU reservation
- C. Increase the number of CPUs on the virtual machine
- D. Increase CPU shares

**Answer:** B

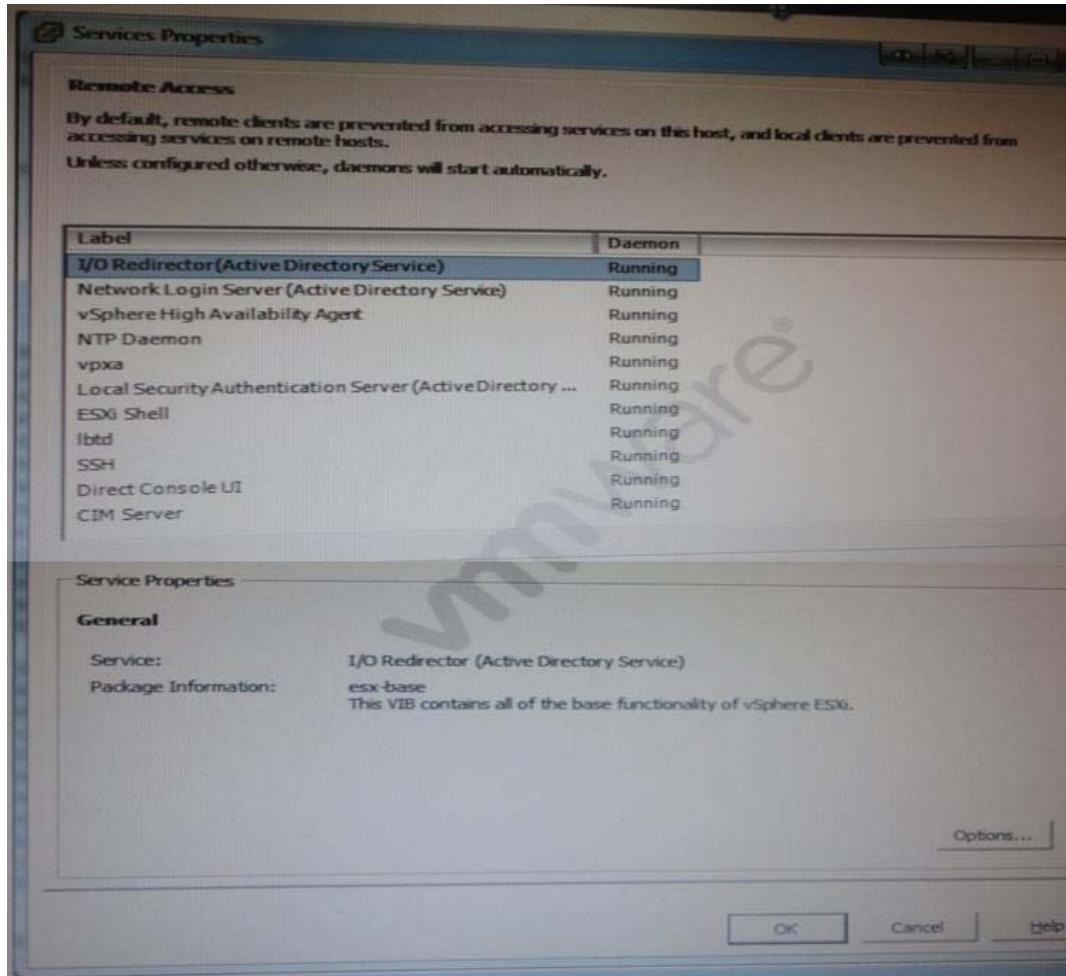
**QUESTION:** 253

An administrator decides to implement a Fixed multipathing policy for an ESXi host with four available paths and four configured VMFS datastores. After the policy has been enabled for each datastore, how many paths by default will the host use to send data to the four datastores?

- A. 4
- B. 3
- C. 1
- D. 2

**Answer:** A

**QUESTION:** 254  
Refer to the Exhibit.



10 ESXi 5.x hosts will be installed as part of vSphere 5 deployment. Security hardening is required as part of the installation. The current security profile is displayed in the exhibit. Which three services shown in the exhibit can be disabled to secure the hosts with nominal impact to administrative operation? (Choose three)

- A. Network login server (Active Directory Service)
- B. SSH
- C. ESXi Shell
- D. Direct Console UI
- E. vpxa

**Answer:** B, C, D

Download Full Version From <https://www.certkillers.net>



**DON'T KNOW**  
OR NO PREFERENCE

*Pass your exam at First Attempt....Guaranteed!*