



IBM

SPS-201

IBM SPSS MBPDA - IBM SPSS Modeler Business

QUESTION: 21

Given the information below, which node would be used to produce the correlation statistic between the fields `offpeak_calls` and `weekend_calls`?

Field	Measurement	Values
handset	Nominal	ASAD170,...
churn	Flag	Churned/...
peak_calls	Continuous	[0.0,1725.0]
peak_mins	Continuous	[0.0,2901....]
offpeak_calls	Continuous	[0.0,647.0]
offpeak_mins	Continuous	[0.0,1146.0]
weekend_calls	Continuous	[0.0,124.0]
weekend_mins	Continuous	[0.0,205.0]
international_mins	Continuous	[0.0,1014....]

- A. Matrix node
- B. Statistic node
- C. Histogram
- D. Means node

Answer: B

Reference:

<ftp://ftp.software.ibm.com/software/analytics/spss/documentation/modeler/14.2/en/SourceProcessOutputNodes.pdf>, p. 355

QUESTION: 22

Which method would be used on the Merge node in order to combine a file containing 100 products and a file containing 50 suppliers and retain only the matching records?

- A. Inner join
- B. Anti-join
- C. Full outer join
- D. Partial outer join

Answer: A

Reference:

<ftp://ftp.software.ibm.com/software/analytics/spss/documentation/modeler/14.2/en/SourceProcessOutputNodes.pdf>, p.72

QUESTION: 23

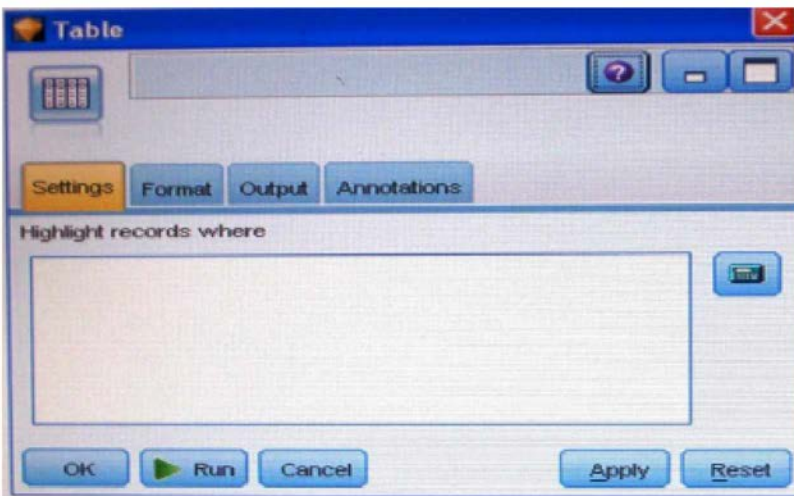
If a field whose measurement is defined as Continuous has no value recoded, IBM SPSS Modeler will treat it as which type of missing value?

- A. Null
- B. White Space
- C. Empty String
- D. Blank

Answer: A

QUESTION: 24

Only terminal nodes (Graphs, Modeling, Output) have a Run button as displayed in the graphic.

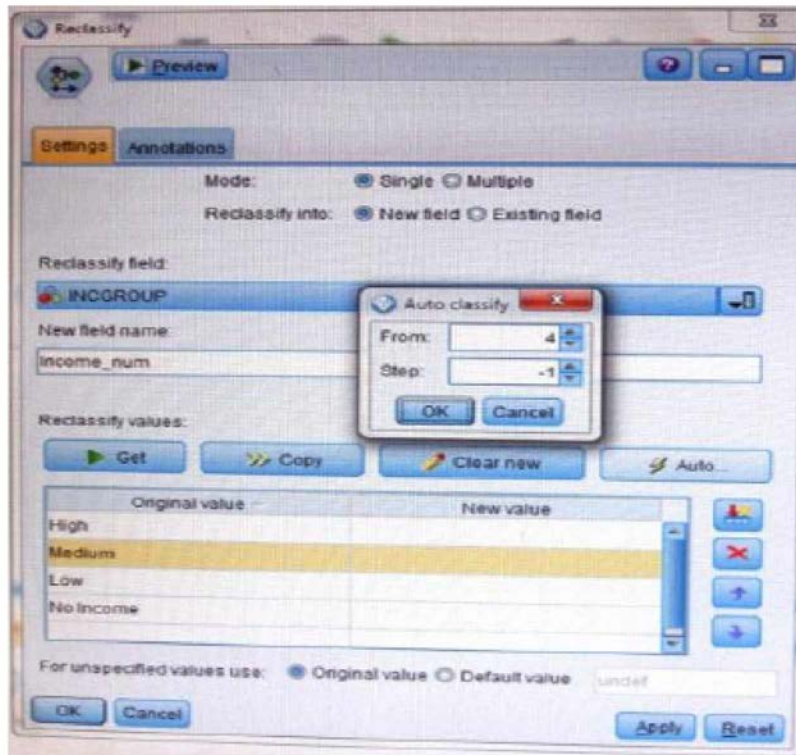


- A. True
- B. False

Answer: A

QUESTION: 25

What new value will be assigned to the original value Low given the specifications in the Reclassify node below?



- A. -1
- B. 2
- C. 3
- D. 4

Answer: A

Download Full Version From <https://www.certkillers.net>



DON'T KNOW
OR NO PREFERENCE

Pass your exam at First Attempt....Guaranteed!