



# Qlik

## QSSA2018 Exam

**Qlik Sense System Administrator Certification Exam - June  
2018 Release**

**Thank you for downloading QSSA2018 exam PDF Demo**

**You can Buy Latest QSSA2018 Full Version Download**

**<https://www.certkillers.net/Exam/QSSA2018>**

# Version: 7.0

---

## Question: 1

---

A company decides to move servers from on-premise to cloud. A system administrator performs a backup, restore, and brings the server online. When users open the app on the hub, they get an error message indicating the app could not be found.

The system administrator confirms that apps are present in the required location and NO changes have been made.

What could be causing this issue?

- A. Shared persistence path is NOT reachable
- B. Synchronized persistence is in place
- C. The app has been moved from one stream to another
- D. The security rules were broken when the servers were migrated

---

**Answer: D**

---

Explanation:

---

## Question: 2

---

Refer to the exhibit.



|                           |                    |        |     |        |
|---------------------------|--------------------|--------|-----|--------|
| Reload License Monitor    | License Monitor    | Reload | Yes | Failed |
| Reload Operations Monitor | Operations Monitor | Reload | Yes | Failed |

Qlik Sense Enterprise is deployed in a multi-node environment. The environment is sequenced into a central, a scheduler, and a consumer node. A system administrator routinely performs updates and available that the system accepts the updates correctly. The system administrator notices that reloads of the License Monitor Operations Monitor fail with this message.

What should the system administrator do to resolve this issue?

- A.
  1. Open the QMC and go to Data connections
  2. Modify all qrs-data connections and change the security for DataConnection\_\* to Read access
  3. Change the owner on all qrs-data connections from INTERNAL/sa\_repository to the Qlik Sense service account. Reboot the server.
  4. Open the QMC and reload the monitoring apps
  5. Open the QMC and go to Data connection
- B.
  1. Open the QMC and go to Data connections
  2. Delete the qrs-data connections
  3. Perform a Qlik Sense Enterprise repair installation
  4. Reboot the server

5. Open the QMC and reload the monitoring apps

C.

1. Open the QMC and go to Data connection

2. Delete the qr\_data connections

3. Manually Import the latest License Monitor and Operations Monitor

4. Remove the old Lisense Monitor and Operations Monitor

5. Open the QMC and reload the new monitoring apps

D.

1. Open the QMC and go to Data connections

2. Delete the qrs-data connections, and recreate them manually

3. Manually import the latest License Monitor and Operator Monitor

4. Change the owner on all qrs-data connections from INTERNAL\sa repository to the Qlik Sense account

5. Open the QMC and reload the new monitoring apps

---

**Answer: A**

---

Explanation:

---

**Question: 3**

---

A single-node Qlik Sense environment has all services up and running. Users reports and sheets are slow to open.

A system administrator works remotely and does NOT have access to the shared file system for the environment. The system administrator's computer can make requests to the Qlik Sense Repository Service. Due to the system for the environment. The system administrator's computer can make request to the Qlik Sense Repository Service. Due to the system performance issues, a system administrator can NOT run any new reloads. The system administrator receives a warning email high RAM usage on the server.

Which step should the system administrator take to troubleshoot this issue?

A. Request the "https:// server.domain.com>engine/performanceceche/" API

B. Access the server remotely and inspect the logs in %ProgramData%Qlik C. Sense/Log/Engine

C. Request the "https//,server.domain.com>/engine/healthcheck/" API

D. Request the "https//"<server domain com>qmc/audit" API

---

**Answer: C**

---

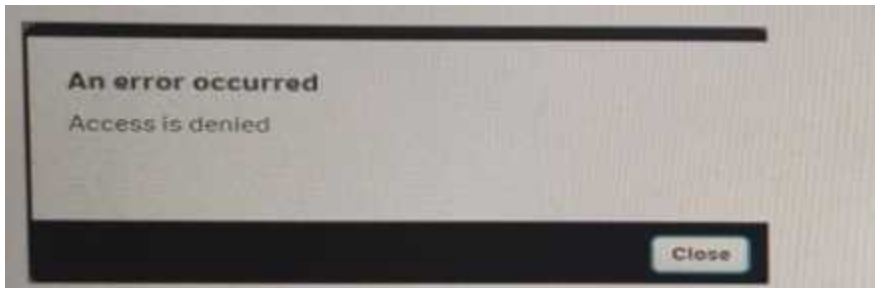
Explanation:

---

**Question: 4**

---

Refer to the exhibit.



A user from the HR department has access to the HR stream. The rule on the stream is:  
When the user tries to open the app in the HR stream, the error in the exhibit displays.

```
{ (user.group!="Delivery" and user.group!="Account Manager" and user.userDirectory!="Externals") }
```

What is causing this error?

- A. The stream rule 'user.userDirectory' is excluding the user
- B. The app contains section access that does NOT include the HR stream security rule
- C. The HR group is NOT include in the rule to access the stream and the app
- D. The app contains section access that does NOT include the user.

---

**Answer: B**

---

Explanation:

---

### Question: 5

---

A system administrator creates a custom property called "dept" and assign it to users apps. The values of the custom property are department names such as Accounting, Finance, and Uses with the same value for "dept" can see and edit each other's apps. Users with different values for the property should NOT see each other's apps.

Which security rule should the administrator use to meet this requirement?

- A. Resource App\_Stream\_\*
- Conditions: User@dept=dept
- B. Resource : App\_\*
- Condition: user @dept=resource id
- C. Resource: App\_\*
- Condition: user,@dept=resource,@dept
- D. Resource:App\_\*
- Conditions;user:@dept=resource,description

---

**Answer: C**

---

Explanation:

**Thank You for trying QSSA2018 PDF Demo**

To Buy New QSSA2018 Full Version Download visit link below

<https://www.certkillers.net/Exam/QSSA2018>

**Start Your QSSA2018 Preparation**

Use Coupon “**CKNET**” for Further discount on the purchase of Full Version Download. Test your QSSA2018 preparation with actual exam questions.