



# Network Appliance

NS0-502 Exam

**Network Appliance NetApp Certified Implementation Engineer -  
SAN Exam**

**Thank you for Downloading NS0-502 exam PDF Demo**

**You can Buy Latest NS0-502 Full Version Download**

<https://www.certkillers.net/Exam/NS0-502>

<https://www.certkillers.net>

---

**Question: 1.**

---

Click

the Exhibit button.

<exhibit name=NS0-502-1>

```
ISCSI: iswta,  
Authentication failed  
for initiator  
<nodename>
```

</exhibit>

You see the following error on the storage controller's console or messages file.

What is the most likely cause for this error?

- A. portal group misconfiguration
- B. iSCSI CHAP misconfiguration
- C. iSNS misconfiguration
- D. IPsec misconfiguration

---

**Answer: B**

---

---

**Question: 2**

---

.

What would you use to share a data LUN among multiple servers where each server has simultaneous write access?

- A. host-based BootBIOS
- B. host-based multipathing
- C. host-based volume manager
- D. host-based clustered file system

---

**Answer: D**

---

---

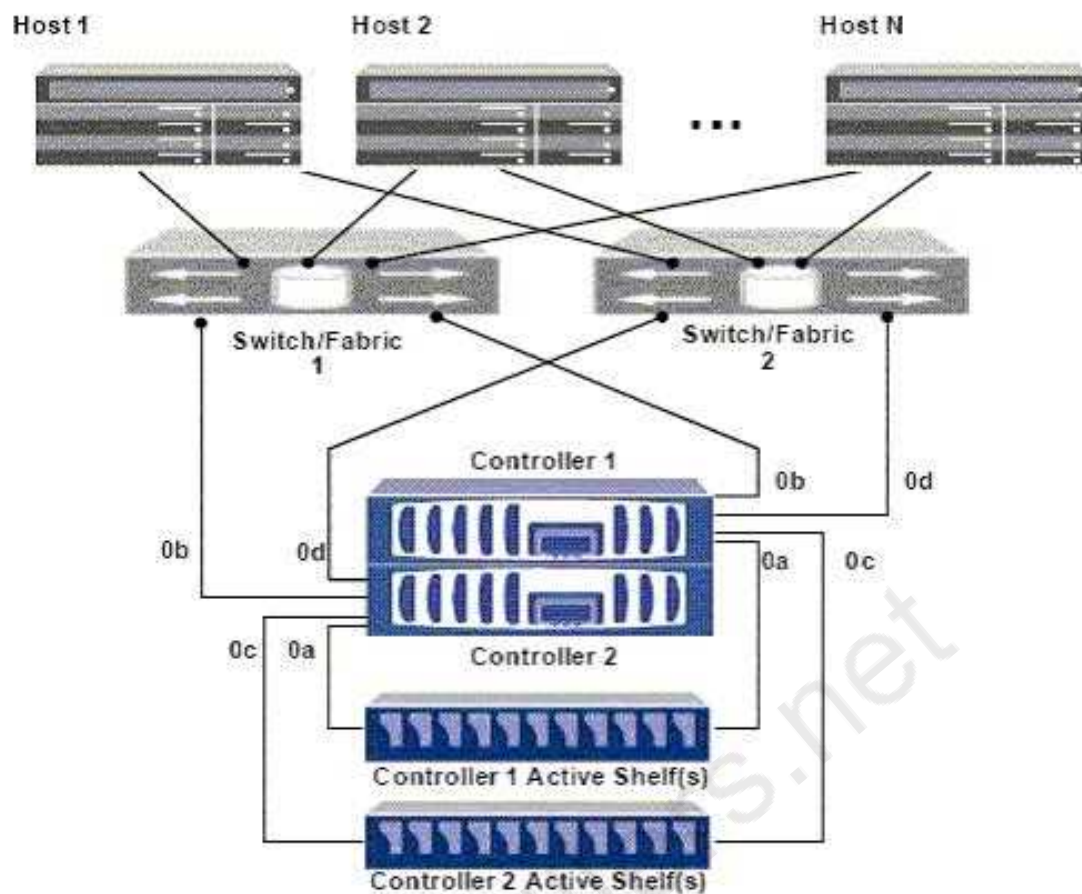
**Question: 3**

---

.

Click the Exhibit button.

<exhibit name=NS0-502-3>



</exhibit>

In the diagram shown, a portset is created on controller 1 with the command: `controller1>portset create -f ntapportset 0b`. This portset is bound to the igroup with all the initiators in it.

How many paths can host 1 see to a LUN on controller 1?

- A. six paths
- B. four paths
- C. eight paths
- D. two paths

---

**Answer: D**

---



---

### Question: 4

---

What are three relevant perfstat counters to check for unaligned I/O that do not fall on the WAFL boundary? (Choose three.)

- A. wp.partial\_write
- B. vvol\_read.io\_valid
- C. read/write\_align\_histo.XX
- D. read/write\_partial\_blocks.XX

E. xinode content misses

---

**Answer: ACD**

---

---

**Question: 5**

---

.  
Click the Exhibit Button

<exhibit name=NS0-502-5>

Guarantee	= none
LUN Reservation	= on
Fractional_reserve	= 0%
Snap_reserve	= 0%
Auto_delete	= volume
Auto_grow	= off
Try_first	= snap_delete

</exhibit>

The table highlights the space management policy that is defined for a particular flexvol, acmevol. Based on the information provided in the table, which action will the storage controller take when it runs out of space in the volume?

- A. It will try deleting Snapshot copies first to reclaim space before trying to grow the volume.
- B. It will grow the volume before deleting Snapshot copies.
- C. It will only try deleting Snapshot copies to reclaim space and will not grow the volume.
- D. It is irrelevant since fractional\_reserve is 0%.

---

**Answer: C**

---

---

**Question: 6**

---

.  
Which utility on Windows 2003 and Windows 2008 can be used to collect information about firmware and driver versions for an Emulex LP1xxxx/LPe1xxx HBA?

- A. EMutil
- B. SANutil
- C. fcp config
- D. SANSurfer
- E. HBAnywhere

---

**Answer: E**

---

---

**Question: 7**

---

.  
Which utility on Solaris 10 can be used to collect information about firmware and driver versions for an Emulex LP1xxxx/LPe1xxxx HBA?

- A. EMutil
- B. SANutil
- C. hbainfo
- D. SANSurfer
- E. HBAnywhere

---

**Answer: E**

---

---

**Question: 8**

---

.  
Which utility on Solaris 10 can be used to collect information about firmware and driver versions for a QLogic QLxxx/QLExxx HBA?

- A. EMutil
- B. SANutil
- C. cfgadmin
- D. SANSurfer
- E. HBAnywhere

---

**Answer: D**

---

---

**Question: 9**

---

.  
An organization currently has a NetApp Fibre Channel block-based solution. With limited budget and resources, they want to create a new disaster recovery site that utilizes a NetApp solution. What would the optimal solution include?

- A. SnapMover and Fibre Channel at the disaster recovery site for all hosts
- B. SnapMirror and iSCSI at the disaster recovery site for all hosts
- C. Fibre Channel at both locations using ftp to replicate storage
- D. MetroCluster and NAS

---

**Answer: B**

---

---

**Question: 10**

---

.  
A company has a Fibre Channel environment and wants to connect a new host in a remote data center using 50/125um OM2 multi-mode fiber cable and needs to support 2 Gb speeds. What is the maximum distance of the cable run supported in this situation?

- A. 50/125um OM2 multi-mode fiber cable supports up to 500 meters at 2 Gb.
- B. 50/125um OM2 multi-mode fiber cable supports up to 10000 meters at 2 Gb.
- C. 50/125um OM2 multi-mode fiber cable supports up to 150 meters at 2 Gb.
- D. 50/125um OM2 multi-mode fiber cable supports up to 300 meters at 2 Gb.

---

**Answer: D**

---

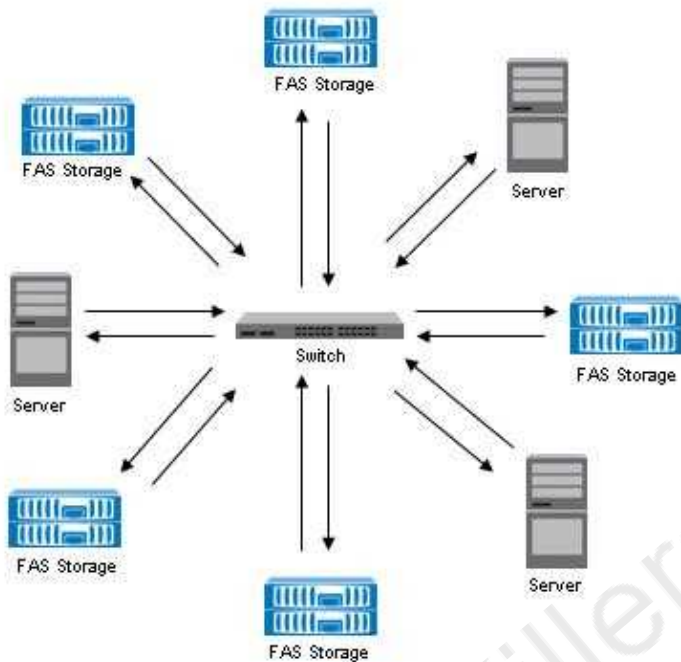
---

**Question: 11**

---

Click the Exhibit button.

<exhibit name=NS0-502-11>



</exhibit>

Given the information provided in the diagram, what is the appropriate FC topology?

- A. point-to-point
- B. switched fabric
- C. arbitrated loop
- D. ring

---

**Answer: B**

---

## Thank You for trying NS0-502 PDF Demo

To Buy Latest NS0-502 Full Version Download visit link below

<https://www.certkillers.net/Exam/NS0-502>

## Start Your NS0-502 Preparation

**[Limited Time Offer]** Use Coupon “CKNET” for Further discount on your purchase. Test your NS0-502 preparation with actual exam questions.

<https://www.certkillers.net>