



# Network Appliance

NS0-171 Exam

**Network Appliance FlexPod Implementation and  
Administration Exam**

**Thank you for Downloading NS0-171 exam PDF Demo**

**You can Buy Latest NS0-171 Full Version Download**

<https://www.certkillers.net/Exam/NS0-171>

<https://www.certkillers.net>

---

**Question: 1**

---

What are two valid cluster interconnect switches? (Choose two.)

- A. NetApp CN610
- B. Cisco Nexus 5596
- C. Cisco Nexus 9504
- D. Cisco Nexus 7004

---

**Answer: A,B**

---

---

**Question: 2**

---

A Cisco UCS system is operating in FC End-Host Mode. The fabric Interconnects are uplinked into Nexus 5672UP switches using native FC. The service profiles are unable to boot from SAN using FC. When executing the show flogi database command on the Nexus switches, only the Fabric Interconnect port WWNs are visible. No service profile WWNs are shown. What caused this issue?

- A. The Nexus switches do not have NPV enabled.
- B. The Nexus must be configured for FCoE instead of native Fibre Channel.
- C. The Nexus switches do not have NPIV enabled.
- D. The zoning on the Nexus switches is incorrect.

---

**Answer: C**

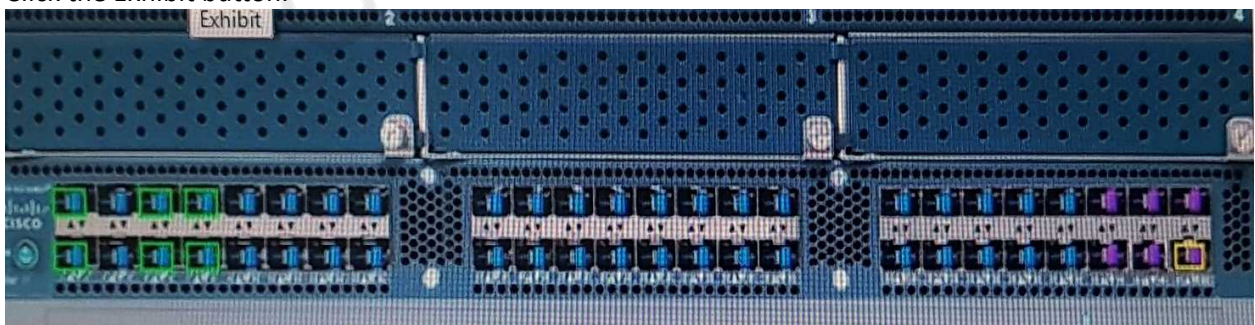
---

---

**Question: 3**

---

Click the Exhibit button.



An administrator is building a FlexPod configuration with UCS 6296 Fabric Interconnect devices that support legacy Fibre Channel (FC) connections. The administrator uses UCS Manager to configure the unified ports on the Fabric Interconnect.

Referring to the exhibit, how many ports will FC use after the configuration is completed?

- A. 16
- B. 2
- C. 1

D. 6

---

**Answer: A**

---

---

**Question: 4**

---

An administrator is configuring a Flexpod Datacenter solution. The UCS service profiles will use FCoE connectivity to the NetApp cluster.

Which pool is needed to configure the vHBA templates?

- A. WWPN pool
- B. MAC pool
- C. IQN pool
- D. WWNN pool

---

**Answer: A**

---

---

**Question: 5**

---

Which LIF role is used for SnapMirror traffic on a system running clustered Data ONTAP?

- A. intercluster
- B. node-management
- C. interconnect
- D. cluster-management

---

**Answer: A**

---

---

**Question: 6**

---

Which set of commands maps VLAN 100 to VSAN 100?

- A. Nexus 5000-A#configure terminalNexus 5000-A (config) # vlan 100Nexus 5000- A (config-vlan\_#fcoe vsan 100
- B. Nexus 5000-B# configure terminalNexus 5000-B (config) # vsan databaseNexus 5000-B (config-vsan)# vsan 100Nexus 5000-B(config- vsan) #vsan 100 name FCoE-VLAN 100
- C. Nexus 5000-A#configure terminalNexus 5000-B (config) # vsan databaseNexus 5000-A (config)# vsan 100Nexus 5000-A (config-vsan) # fcoe vsan 100
- D. Nexus 5000-B# configure terminalNexus 5000-B(config-vsan) # vlan 100Nexus 5000-B (config-vsan)# vsan 100 name vsan100

---

**Answer: A**

---

## Thank You for trying NS0-171 PDF Demo

To Buy Latest NS0-171 Full Version Download visit link below

<https://www.certkillers.net/Exam/NS0-171>

## Start Your NS0-171 Preparation

**[Limited Time Offer]** Use Coupon “CKNET” for Further discount on your purchase. Test your NS0-171 preparation with actual exam questions.

<https://www.certkillers.net>