

Huawei

H12-224 Exam

HCIP-Routing & Switching (Fast Track) V2.0



Question: 1

On a STP network, which of the following BPDUs are sent during flooding of information throughout the network due to STP topology change?

- A. BPDUs with the TCN flag
- B. BPDUs with the TCA flag
- C. BPDUs with the TC flag
- D. All of the above

Answer: D

Question: 2

The "import-route limit" command is used to set a maximum number of imported routes that can be imported into an OSPF routing process.

- A. TRUE
- B. FALSE

Answer: A

Question: 3

Dividing a network using VLANs can (). (Select 2 answers)

- A. Support more network layer protocols
- B. Restrict the scope of broadcast domains
- C. Increase the number of collision domains
- D. Guarantee data security

Answer: BD

Question: 4

Which of the following protocols support the multicast ASM service model? (Select 2 answers)

- A. PIM-SM and IGMPv2
- B. PIM-SSM and IGMPv3
- C. BGP and OSPF
- D. PIM-DM and IGMPv2

Answer: AD

Question: 5

You cannot set an aging time for the blacklist of the USG.

- A. TRUE
- B. FALSE

Answer: B

Question: 6

Which of the following statements regarding VLAN configuration are true? (Select 2 answers)

- A. You can enter the VLAN view and create a VLAN at the same time.
- B. Running undo VLAN invalidates the VLAN but the VLAN still exists. You do not need to recreate the VLAN to use it.
- C. You can configure a description string of VLAN. The length of the string is unlimited.
- D. If the VLAN ID is not entered when running the display VLAN command, all information about the VLAN will be displayed.

Answer: AD

Question: 7

How many bits of the MAC address space is available for mapping IP multicast addresses?

- A. 24
- B. 22
- C. 25
- D. 23

Answer: A

Question: 8

An OSPF neighbor relationship fails to establish and the OSPF error information is displayed as follows. Which of the following is most likely the cause?

```

[RTB]display ospf error
      OSPF Process 1 with Router ID 2.2.2.2
      OSPF error statistics:
General packet errors:
0   : IP: received my own packet    0   : Bad packet
0   : Bad version                   0   : Bad checksum
0   : Bad area id                   0   : Drop on unnumbered interface
0   : Bad virtual link              0   : Bad authentication type
0   : Bad authentication key        0   : Packet too small
0   : Packet size > ip length       0   : Transmit error
0   : Interface down                0   : Unknown neighbor
HELLO packet errors:
0   : Netmask mismatch              0   : Hello timer mismatch
0   : Dead timer mismatch           0   : Extern option mismatch
9   : Router id confusion            0   : Virtual neighbor unknown
0   : NBMA neighbor unknown
DD packet errors:
0   : Neighbor state low            0   : Router id confusion
0   : Extern option mismatch        0   : Unknown LSA type
0   : MTU option mismatch
LS ACK packet errors:
0   : Neighbor state low            0   : Bad ack
0   : Duplicate ack                 0   : Unknown LSA type
LS REQ packet errors:
0   : Neighbor state low            0   : Empty request
0   : Bad request
LS UPD packet errors:
0   : Neighbor state low            0   : Newer self-generate LSA
0   : LSA checksum bad              0   : Received less recent LSA
0   : Unknown LSA type
Opaque errors:
0   : 9-out of flooding scope       0   : 10-out of flooding scope
0   : 11-out of flooding scope
Retransmission for packet over Limitation errors:
0   : Number for DD Packet           0   : Number for Update Packet
0   : Number for Request Packet
Receive Grace LSA errors:
0   : Number of invalid LSAs        0   : Number of policy failed LSAs
0   : Number of wrong period LSAs
Configuration errors:
0   : Tunnel cost mistake
0   : The network type of the neighboring interface is not consistent.

```

- A. Router IDs conflict.
- B. Area IDs are mismatched.
- C. Network masks are inconsistent.

D. Authentication types are inconsistent.

Answer: C

Question: 9

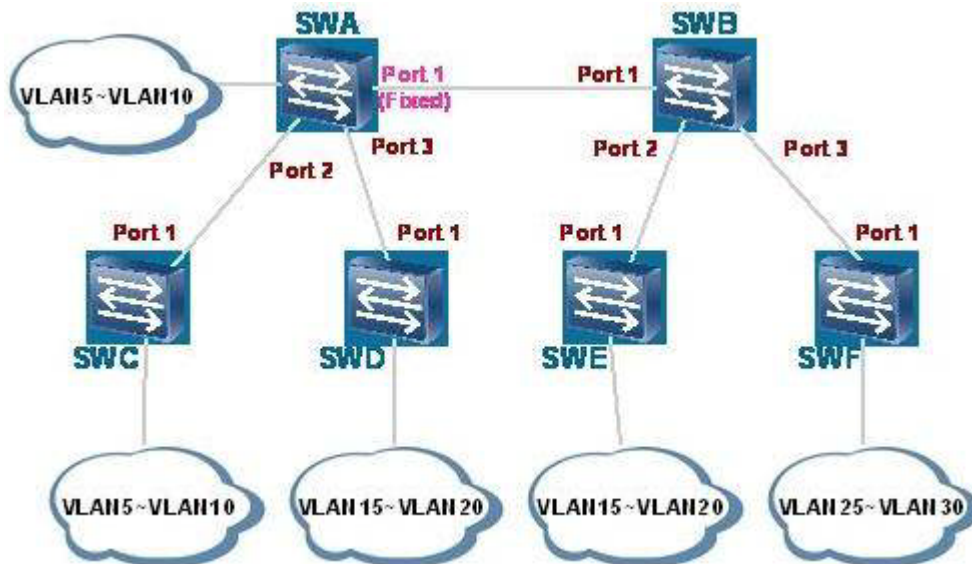
On the RSTP network with STP devices, which packets does an RSTP switch use to notify the STP switches of the topology change?

- A. RSTP BPDUs with the TC flag
- B. STP BPDUs with the TCN flag
- C. RSTP BPDUs with the TCA flag
- D. STP BPDUs with the TCA flag

Answer: B

Question: 10

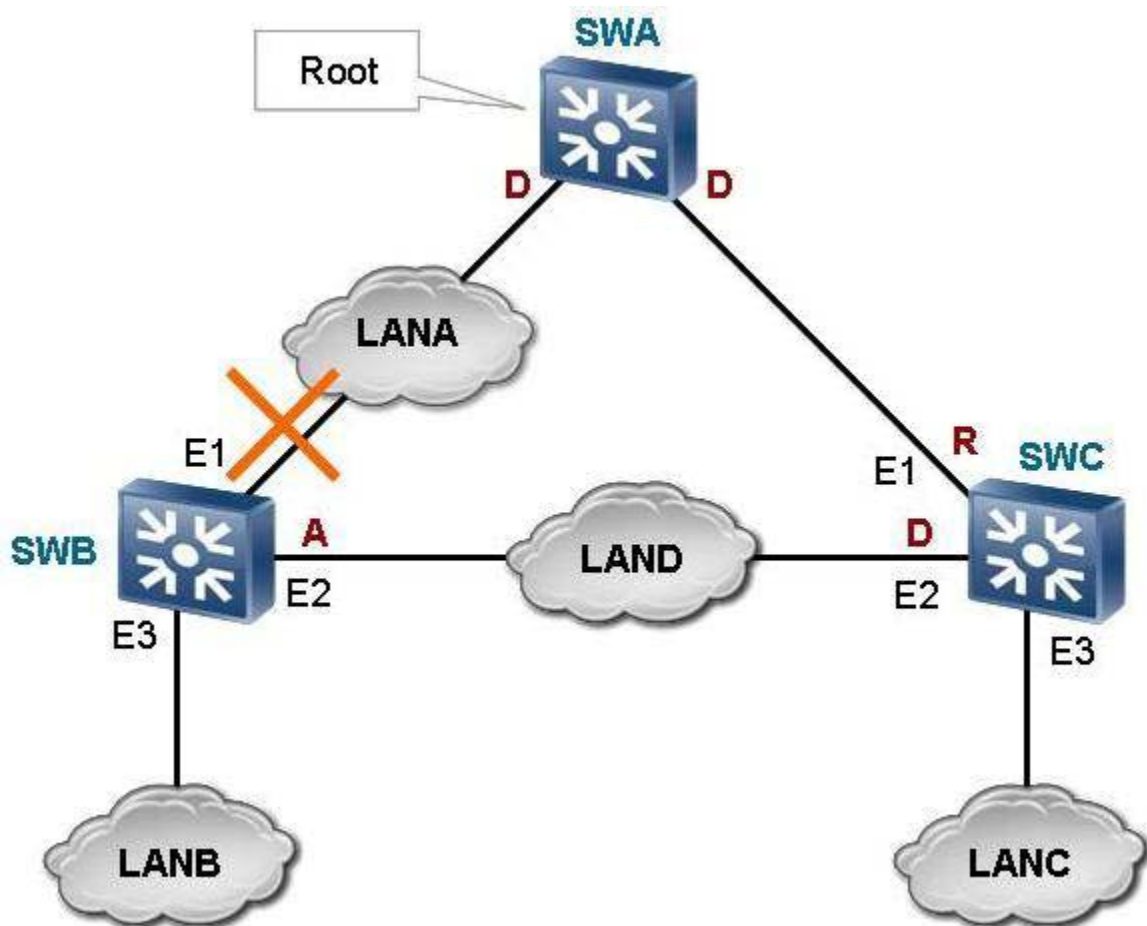
What are the same fields in RSTP BPDUs and STP BPDUs? (Select 2 Answers)



- A. TCN
- B. TC
- C. TCA
- D. All of the above

Answer: B, C

Question: 11



On the RSTP network as shown in the figure, what RSTP operations will occur after the E1 port of SWB fails? (Select 3 Answers)

- A. SWB deletes the MAC address entries with the E1 port as the destination interface.
- B. The spanning tree is recalculated and the E2 port is elected as the new root port.
- C. All the interfaces in forwarding state send topology change notifications (TCNs) to notify other switches of the topology change.
- D. All the non-edge ports in forwarding state send TCNs to notify other switches of the topology change.

Answer: A, B, D

Question: 12

Which is the port state defined in RSTP?

- A. Discarding

- B. Learning
- C. Forwarding
- D. All of the above

Answer: D

Question: 13

RSTP has all functions that STP has and it is backward compatible with STP.

- A. True
- B. False

Answer: A

Question: 14

RSTP adopts fast convergence mechanism. So, there is no Forward Delay interval in RSTP.

- A. True
- B. False

Answer: B

Question: 15

Two switches are directly connected to each other and they are working in full duplex mode. By default, RSTP will consider the link between the switches as point-to-point link.

- A. True
- B. False

Answer: A

Question: 16

In RSTP network environment, a port can be set as edge port when it is directly connected with terminal.

- A. True