



**IBM**

**C4040-129**

*IBM i 7.1 Administration*

same time.

D. Back up files LIBX(WES\*TYPE(\*LF) and access paths. Run the SAVOBJ command again to backup the physical file LIBX/WFS.

**Answer:** C

**QUESTION:** 154

During a migration the system is mistakenly IPLed. The data migration is successfully resumed and completed. When the administrator runs the RSTAUT command, no authorities are restored. What is the most likely cause of the problem?

- A. The RCLSTG command was not run before the data restore was resumed.
- B. The storage management directory was overlaid as a result of the IPL.
- C. The INZSYS command was not successfully run before restoring authorities.
- D. The private authority table loaded by the RSTUSRPRF command was automatically deleted by the system IPL.

**Answer:** D

**QUESTION:** 155

An administrator needs to see the system assigned job number and percent of processing unit time attributed to all jobs currently running. Which steps should the administrator take to accomplish this?

- A. WRKJOB JOB(t), option 3 to display job run attributes
- B. WRKACTJOB and press P11 twotimes to Display Thread Data
- C. WRKSYSACT INFTYPF(\*JOBS) and press PIO to update the list
- D. WRKSYSSTS and press P19 to display Extended System Status

**Answer:** B

**QUESTION:** 156

A new sales user attempts to sign on to the system. The user is immediately signed off. The users job log contains the message CPE981 0: Library SALESLIB not found. All sales applications are located in the ASP named SALES. Which parameter should the administrator set in the user profile to correct this error?

- A. JOBD
- B. GRPPRE
- C. INLIBL
- D. INLASPGRP

**Answer:** A

**QUESTION:** 157

A tape cycle consists of 5 daily save tapes. After restoring a library from the Monday tape the administrator discovered that the library restored was from 2 weeks ago rather than last week. Which action will allow the administrator to restore the correct version of the library in the future?

- A. Modify the save procedure to initialize the tape prior to the save.
- B. Use the OMITLIB parameter on the restore to omit the older versions of the library.
- C. Use sequence number \*LAST on the restore to restore the most recent version of the library.
- D. Use the POSITION parameter on the restore to specify \*LASTSAV restoring only the most recent version.

**Answer:** A

**QUESTION:** 158

According to IBM recommendations, which parameter setting should be applied when a new GROUP profile is created?

- A. Password parameter set to \*NONE
- B. Group ID number parameter set to U
- C. User Class parameter set to \*GROUP
- D. Initial Program to call parameter set to \*NONE

**Answer:** A

**QUESTION:** 159

A customer has a database that is fully journaled, including remote journals. The overnight backup of the data, including access paths, completed normally. The system failed and the customer needs to recover on the remote journal system. After restoring the nightly save to the remote system, what must the administrator do to make the database usable on the remote system?

- A. Apply journal changes from the remote copy of the journal receivers to the restored data.
- B. Apply journal changes from the remote copy of the journal receivers to the restored data. EDTRBDAP to monitor the rebuild of the access paths.
- C. Restore the saved journals to the remote system. Apply journal changes from the remote copy of the journal receivers to the restored data. EDTRBDAP to monitor the rebuild of the

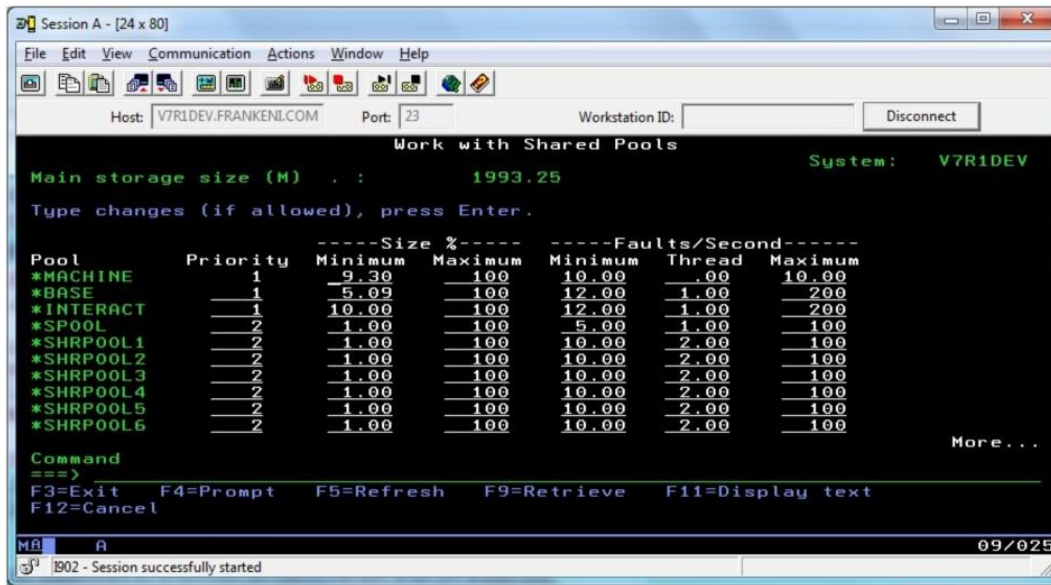
access paths.

D. Restore the saved journals to the remote system. Associate the remote receivers to the restored journals. Apply journal changes from the remote copy of the journal receiversto the restored data.

**Answer:** A

**QUESTION:** 160

In the Work With Shared Pools panel shown, what is the meaning of the “Maximum” column under the “Size” section?



- A. The maximum amount of main storage that can be assigned to the pool in GB.
- B. Themaximum percentage of the total main storage that can be assigned to the pool.
- C. The maximum amount of main storage that the automatic tuner will assign to the pool in GB.
- D. The maximum percentage of the total main storage that the automatic tuner will assign to the pool

**Answer:** D

**QUESTION:** 161

An administrator needs to create a profile for a user, named User1 that is able to access the entire system except for the PAYROLL library. What should the administrator do to achieve this?

- A. Create a group profile named ITADMIN.  
Create a user profile named User1 with \*ALLOBJ authority and make it a member of

ITADMIN.

Grant the ITADMIN group \*EXCLUDE authority to the library PAYROLL.

B. Create a group profile named ITADMIN.

Create a user profile named User1 with \*ALLOBJ authority and make it a member of ITADMIN. Grant the user profile named User1 'EXCLUDE authority to the library PAYROLL.

C. Create a group profile named ITADMIN with \*ALLOBJ authority.

Create a user profile named User1 with no special authority and make it a member of ITADMIN. Grant the ITADMIN group \*EXCLUDE authority to the library PAYROLL.

D. Create a group profile named ITADMIN with \*ALLOBJ authority.

Create a user profile named User1 with no special authority and make it a member of ITADMIN. Grant the user profile named User1 \*EXCLUDE authority to the library PAYROLL.

**Answer:** D

**QUESTION:** 162

An administrator is creating a new connection to an existing system, but cannot connect successfully. Which action will resolve the problem?

A. Create a user profile for the connection.

B. Delete, recreate, and test the connection.

C. Enable the user profile for the connection.

D. Change the connection to be the Management Central system.

**Answer:** B

**QUESTION:** 163

An administrator wants to ensure a job on the scheduler is ignored if the system is in a restricted state at the time it is scheduled to run. What change will make this occur?

A. Change the recovery action of the job schedule entry to \*NOSBM.

B. Change the user profile on the job schedule entry to QRECOVERY.

C. Change the frequency option of the job schedule entry to \*ACTIVE.

D. Use the option on the WRKJQBSCDE screen for "hold when restricted."

**Answer:** A

**QUESTION:** 164

When a user opens up Database Navigator for IBM i 7.1, only the QGPL database is initially available. The user needs the list of schemas to be available each time Database Navigator is opened. What action can the administrator take to support therequirement?

- A. Add the user to the authorization list QSM1 AUTL and restart the host servers.
- B. In Application Administration for System i Navigator, enter a schema name and press the ADD button.
- C. Create a supplemental group profile that has the needed list of libraries assigned and make the user a member of that supplemental group.
- D. Create a job description with the appropriate list of libraries on it and assign the job description to the user. Have the user sign off and sign on again.

**Answer: D**

Download Full Version From <https://www.certkillers.net>



**DON'T KNOW**  
OR NO PREFERENCE

*Pass your exam at First Attempt....Guaranteed!*