



**IBM**

**C4040-120**

*Academic Associate: IBM i 7 Administration*

**QUESTION: 74**

A series of batch jobs run continuously and must be shut down for backup. The job logs are very large and take several minutes to generate, which delays the start of backup. Company policy states that all jobs must generate job logs. What can the administrator do to help ensure that backups start on time?

- A. Increase the time-slice of the jobs.
- B. Increase the size of the memory pool of the subsystem the jobs run in.
- C. Change the job status to \*HOLD, the job log server to \*YES, and PRTTEXT to \*JOBLOG.
- D. Change the job description for these jobs so that the job log is generated by a job log server

**Answer: D**

**QUESTION: 75**

Which list includes objects that can each affect where printed output is directed?

- A. User Profile Display Device Job Description
- B. Class Description Display Device Job Description
- C. User Profile Subsystem Description Job Description
- D. Subsystem Description Display Device Job Description

**Answer: A**

**QUESTION: 76**

Given the following information, where can an administrator find the joblog for a user who is currently signed-on?

# System i Navigator

File Edit View Help



Environment: Mv Connections

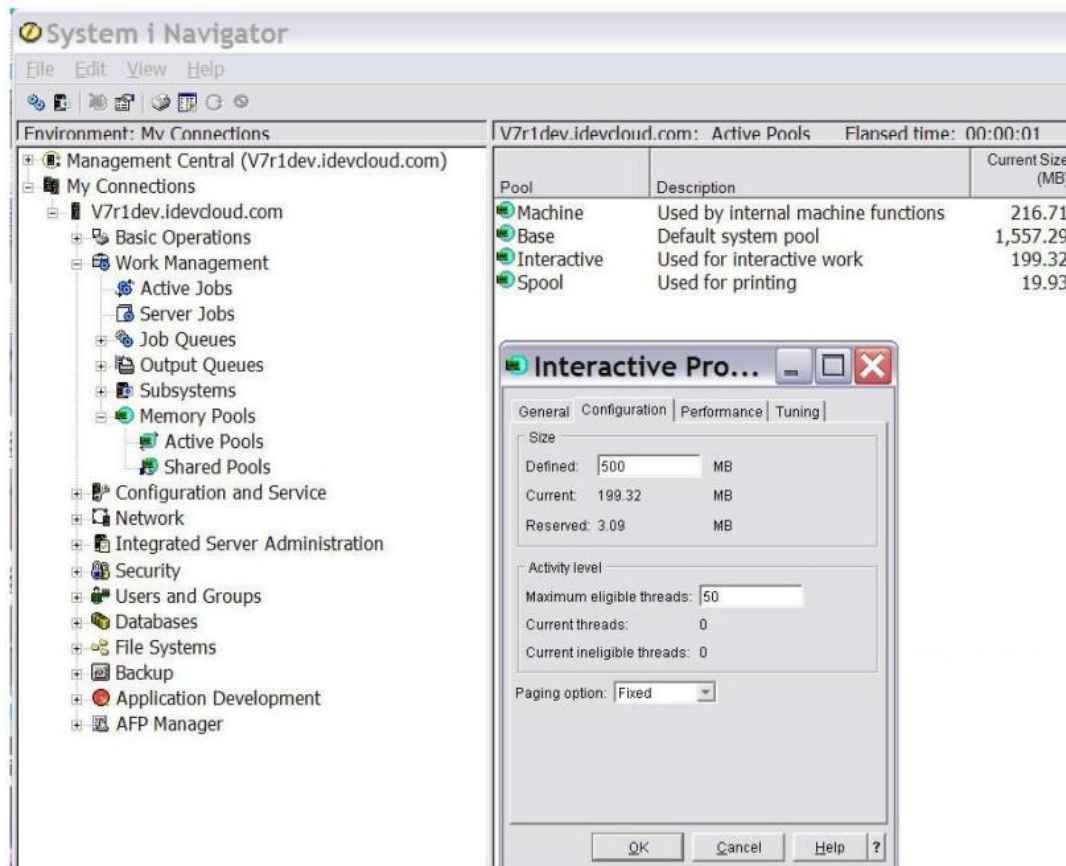
- [-] V7r1dev.idevcloud.com
  - [-] Basic Operations
    - Messages
    - Printer Output
    - [+] Printers
    - Jobs
  - [-] Work Management
    - Active Jobs
    - Server Jobs
    - [+] Job Queues
    - [+] Output Queues
    - [+] Subsystems
    - [+] Memory Pools
  - [-] Configuration and Service
    - System Values
    - History Log
    - Time Management
    - [+] Hardware
    - [+] Software
    - [+] Fixes Inventory
    - Collection Services
    - Logical Partitions
  - [+] Network
  - [+] Integrated Server Administration
  - [+] Security
  - [-] Users and Groups
    - All Users
    - [+] Groups
    - Users Not in a Group

- A. Basic Operations / Messages
- B. Users and Groups / All Users
- C. Work Management/ Active Jobs
- D. Configuration and Service / History Log

**Answer:** C

**QUESTION:** 77

Given the following information, what will be the effect of increasing the Interactive pool to 500MB?



- A. Memory will be allocated from the HMC using DLPAR.
- B. All active pools contribute equally to the Interact pool.
- C. The Base pool will transfer the memory to the Interact pool.
- D. The memory pools will be adjusted at the next partition IPL.

**Answer:** C

**QUESTION:** 78

Select the command that saves the system library (QSYS), all security information, all system configuration objects, and the Licensed Internal Code (LIC)?

- A. SAVSTG
- B. SAVCFG
- C. SAVSYS
- D. SAVLIC

**Answer:** C

**QUESTION:** 79

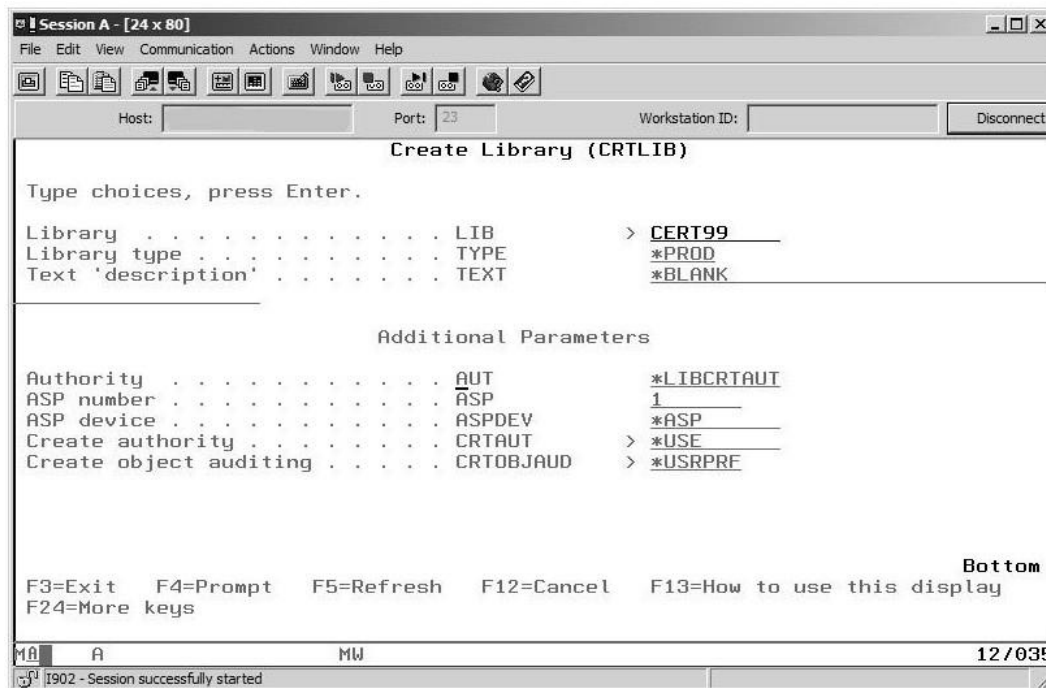
After enabling \*ALL auditing on an object, which action will help an administrator determine when that object was used?

- A. Analyze the system audit journal for the desired entries.
- B. Display the QHST log to see instances of audited object usage.
- C. Examine the QSYSOPR message queue for specific object usage notifications.
- D. Issue the DSPOBJD command using the OUTPUT(\*PRINT) parameter to generate usage history.

**Answer:** A

**QUESTION:** 80

An administrator is creating the library shown in the figure. What will be the result of having the AUT, CRTAUT, and CRTOBJAUD parameters set to the values shown?



- A. Authority to the library is derived from the system value QLIBAUT. Public authority for objects created in this library will be \*USE. The user profile of the user creating the object will determine if entries are sent to the QHST log for created objects.
- B. Authority to the library is derived from the authority of the user profile USRCLS parameter. All users will have \*USE authority to the object. The user profile of the user accessing the object will determine if creation entries are sent to users Job Log.
- C. Authority to the library is derived from the authority of the QUSRSYS library. User with USRCLS(\*USER) will have \*USE authority to the object. The user profile of the user accessing the object will determine if entries are sent to the security journal for the access
- D. Authority to the library is derived from the authority of the QSYS library. Public authority for objects created in this library will be \*USE. The user profile of the user accessing the object will determine if entries are sent to the security journal for the access

**Answer:** D

**QUESTION:** 81

What is the effect of starting multiple printers assigned to the same outqueue?

- A. Balances the workload of the printers
- B. Allows the system to have a backup printer configured and available
- C. Allows the printing of multiple copies of a spooled file simultaneously
- D. Enables multiple users to use the same outqueue but have output delivered to their local printer

**Answer:** A

**QUESTION: 82**

An administrator uses the value \*SYSVAL in a user profile for the password expiration interval field. What system value is associated with that field?

- A. QPWDCHGITV
- B. QPWDCHGDTE
- C. QPWDEXPDTE
- D. QPWDEXPITV

**Answer: D**

Download Full Version From <https://www.certkillers.net>



**DON'T KNOW**  
OR NO PREFERENCE

*Pass your exam at First Attempt....Guaranteed!*