



IBM

C2090-013 Exam

IBM SPSS Modeler DataMining for Business Partners v2

Thank you for Downloading C2090-013 exam PDF Demo

You can Buy Latest C2090-013 Full Version Download

<https://www.certkillers.net/Exam/C2090-013>

<https://www.certkillers.net>

Version: 7.0

Question: 1

How many phases are in the CRISP-DM Process Methodology?

- A. Four
- B. Five
- C. Six
- D. Seven

Answer: C

Question: 2

True or false: the CRISP-DM Process Methodology is a linear process.

- A. True
- B. False

Answer: B

Question: 3

Which node is used to read data from a comma delimited text file?

- A. Var. File
- B. Data Collection
- C. Fixed File
- D. Statistics File

Answer: A

Question: 4

Examine the Data Audit output shown below.

Field	Measurement	Outliers	Extremes	Action	Impute Mi...	Method	% Complete	Valid
▲ ACCOM	Nominal	--	--		Never	Fixed	100	
▲ COUNTRY	Nominal	--	--		Never	Fixed	100	
▲ CUSTID	Nominal	--	--		Never	Fixed	100	
▲ DIST_TO_BE...	Continuous	1	0	None	Never	Fixed	100	
▲ DOB	Nominal	--	--		Never	Fixed	100	
◆ GENDER	Nominal	--	--		Never	Fixed	98.681	
◆ HOLCODE	Nominal	--	--		Never	Fixed	100	
◆ HOLCOST	Continuous	9	1	Discard	Never	Fixed	97.889	
▲ NAME	Nominal	--	--		Never	Fixed	100	
▲ NIGHTS	Continuous	0	0	Nullify	Never	Fixed	100	
▲ NUMPARTY	Continuous	6	0	None	Never	Fixed	100	
▲ POOL	Flag	--	--		Never	Fixed	100	
▲ REGION	Nominal	--	--		Never	Fixed	100	
◆ TRAVDATE	Nominal	--	--		Never	Fixed	100	

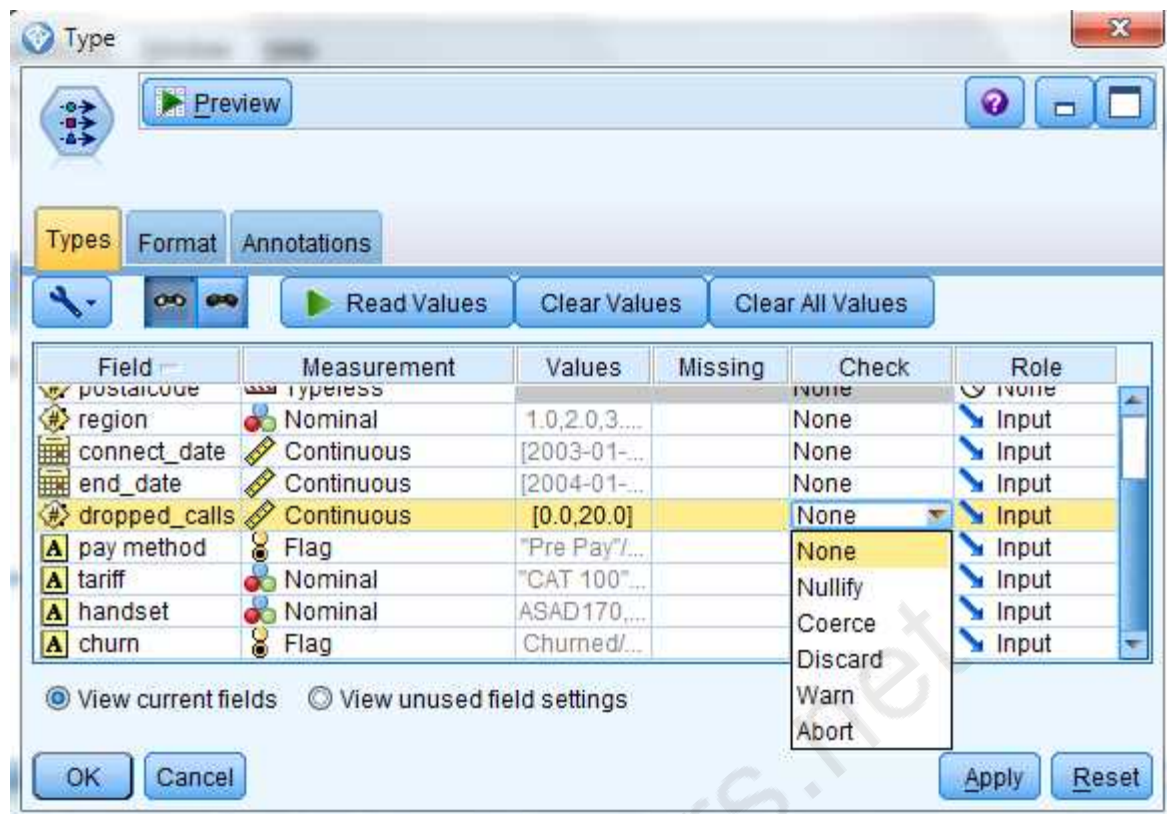
What action will occur in a generated Outlier & Extreme Supernode for HOLCOST?

- A. Nine records will be set to the system missing (null) value for HOLCOST.
- B. Ten records will be deleted.
- C. Ten records will be set to the system missing (null) value for HOLCOST.
- D. Nine records will be deleted.

Answer: B

Question: 5

Given the Type node shown below,



what specifications are necessary to change all values outside the range 1 to 15 in field dropped_calls to the undefined (\$null\$) value?

- A. Pass Values and Check action Nullify
- B. Specify Values Lower 1 and Upper 15 and Check action Nullify
- C. Specify Values Lower 1 and Upper 15 and Check action Discard
- D. Read Values and Check action Warn

Answer: B

Thank You for trying C2090-013 PDF Demo

To Buy Latest C2090-013 Full Version Download visit link below

<https://www.certkillers.net/Exam/C2090-013>

Start Your C2090-013 Preparation

[Limited Time Offer] Use Coupon “CKNET” for Further discount on your purchase. Test your C2090-013 preparation with actual exam questions.

<https://www.certkillers.net>