



IBM

C2070-587

IBM FileNet P8 V5.1

Answer: D

QUESTION: 110

A customer completed the installation of an IBM FileNet P8 environment and wants to validate the Process Engine Component Manager status. A workflow is created calling a CE_Operation from a Component Integrator step. If the component step fails where should the administrator check to verify that the CE_Operations queue is started?

- A. Use Process Task Manager to check the CE_Operations queue status.
- B. Use FileNet Enterprise Manager to check the CE_Operations queue status.
- C. Use Process Configuration Console to check the CE_Operations queue status.
- D. Use Process Task Manager and Process Configuration Console to check the CE_Operations queue status.

Answer: A

QUESTION: 111

A highly available IBM FileNet P8 environment has just been installed with horizontally scaled Process Engine (PE) servers using a hardware load balancer. There are currently two PE servers in this farm. There are three Connection Points currently configured, one for PE #1, one for PE #2, and one for the virtual address and port of the farm as defined in the load balancer. Additionally there are load balanced implementations of Workplace XT (WPXT) and Content Engine (CE). Assuming all P8 core components are currently active, and the Connection Point for the PE farm is currently selected in the WPXT Site Preferences, which of the following is the best choice for validating PE functionality in conjunction with the load balancer.

- A. View the PE Ping Page of the load balancer (i.e. http://<virtual_name>:<virtual_port>/IOR/ping). Continue to refresh this page in the browser until both PE servers respond. View the PE Ping Page of each PE server directly. Compare the results.
- B. Shutdown PE #2. Logon via WPXT. Open Process Designer. Create a simple two-step workflow definition. Validate the workflow definition. Start PE #2 and shutdown PE #1. Launch the workflow. Close Process Designer. Complete the first step of the workflow. Start PE #1 and shutdown PE #2. Complete the second step of the workflow.

C. Open two browsers. In the first browser logon to WPXT and change the Site Preferences by selecting a Connection Point that is configured for PE #1. In the second browser, logon to WPXT, launch a previously created two-step workflow.

Complete the first step of the workflow. In the first browser select a Connection Point that is configured for PE #2. In the second browser, complete the second step of the workflow.

D. The required PE session affinity, defined in the load balancer, prevents in-process transactions from failing over to a secondary PE in farmed environment. If a fail occurs, the transaction is rolled-back and the user must restart that transaction upon failing over to a new PE. To test this functionality, begin some PE related work such as launching a workflow and just before completing a step, shutdown the active PE. When attempting to complete the workflow step, the user will have to relaunch that step to continue.

Answer: B

QUESTION: 112

While trying to verify a connection to IBM FileNet Content Engine using FileNet Enterprise Manager, the following error is encountered:



Which of the following represents the cause of this error and the resolution?

- A. Adding the anonymous user to the LDAP users would help overcome this error.
- B. A connection timeout occurred, resulting in the above error. Increasing the timeout duration would help overcome this error.
- C. The credentials used in the FileNet Enterprise Manager Logon could be wrong. Correcting the credentials would help overcome this error.
- D. Application security option may not have been enabled in the application server. Enabling application security would help overcome this error.

Answer: D

QUESTION: 113

A highly available IBM FileNet P8 environment has just been installed with horizontally scaled Process Engine (PE) servers using a hardware load balancer. There are currently two PE servers in this farm. There are three Connection Points currently configured, one for PE #1, one for PE #2, and one for the virtual address and port of the farm as defined in the load balancer. Additionally there are load balanced implementations of Workplace XT (WPXT) and Content Engine (CE). Assuming all P8 core components are currently active and appear to be functioning properly, and the Connection Point for the PE farm is currently selected in the WPXT Site Preferences, which of the following is the best choice for validating that all PE servers are responding properly through the load balancer.

A. View the PE Ping Page of the load balancer (i.e. http://<virtual_name>:<virtual_port>/IOR/ping). Continue to refresh this page in the browser until both PE servers respond. View the PE Ping Page of each PE server directly. Compare the results.

B. Shutdown PE #2. Logon via WPXT. Open Process Designer. Create a simple two-step workflow definition. Validate the workflow definition. Start PE #2 and shutdown PE #1. Launch the workflow. Close Process Designer. Complete the first step of the workflow. Start PE #1 and shutdown PE #2. Complete the second step of the workflow.

C. Open two browsers. In the first browser logon to WPXT and change the Site Preferences by selecting a Connection Point that is configured for PE #1. In the second browser, logon to WPXT, launch a previously created two-step workflow. Complete the first step of the workflow. In the first browser select a Connection Point that is configured for PE #2. In the second browser, complete the second step of the workflow.

D. The required PE session affinity, defined in the load balancer, prevents in-process transactions from failing over to a secondary PE in farmed environment. If a failure occurs, the transaction is rolled-back and the user must restart that transaction upon failing over to a new PE. To test this functionality, begin some PE related work such launching a workflow and just before completing a step, shutdown the active PE. When attempting to complete the workflow step, the user will have to relaunch that step to continue.

Answer: A

QUESTION: 114

After installing the IBM FileNet Content Engine, Workplace XT, and Process Engine, the administrator is validating the Process Engine installation. Which two tools would be used to perform this task?

- A. Process Designer
- B. Configuration Manager
- C. FileNet Enterprise Manager
- D. Process Configuration Console
- E. Administrative Console for Content Engine

Answer: A, D

QUESTION: 115

An IT Administrator would like to verify whether the Component Manager server can communicate with the IBM FileNet Process Engine. What is the correct URL to use from the Component Manager server to test the connectivity?

- A. http://<PEServer>:<port>/IOR/Ping
- B. http://<PEServer>:<port>/P8PE/Health
- C. iiop://<CEServer>:<port>/FileNet/Engine
- D. http://<CEServer>:<port>/wsi/FNCEWS40MTOM

Answer: A

QUESTION: 116

A customer would like to check the health of an IBM FileNet Content Engine deployment. Which of the following would the customer use?

- A. t3://<CEServer>:<port>/P8CE/Health
- B. iiop://<CEServer>:<port>/P8CE/Health
- C. http://<CEServer>:<port>/P8CE/Health
- D. cemp://<CEServer>:<port>/P8CE/Health

Answer: C

QUESTION: 117

A customer completed the installation of IBM FileNet P8 and wants to validate the Process Engine (PE) status. The IBM FileNet PE server Information page (IOR/ping) displays several parameters and statuses of the PE environment. What are the system parameter that can be obtained from Process Engine server information page?

- A. PE classpath, PE log file location, and the number of isolated regions.
- B. PE log file location, PE host name, and bootstrap user credential status.
- C. PE data directory, number of isolated regions, and GCD database domain object.
- D. PE classpath, PE log file location, and list of configured fixed content devices (FCDs).

Answer: A

QUESTION: 118

After an upgrade to IBM FileNet P8 V5.1 of a Highly Available BPM installation with Content Engine (CE) in an IBM WebSphere cluster, the administrator discovers an issue with CE. Working with an IBM support representative it is determined that an interim fix for CE needs to be applied. The fix pack EAR file is copied to the CE lib directory and the current EAR file is undeployed. Then the Configuration Manager was used to update the bootstrap information and deploy the application to the Deployment Manager. During testing, the administrator was unable to logon onto the PE. Which next steps should be taken to resolve this issue?

- A. Redo the MustGather information, escalate the issue with IBM Support.
- B. Apply the fix to the remaining CE nodes in the cluster rather than the node manager.
- C. Contact the IBM Support Representative and open a new PMR for the PE issue, gather the MustGather information related to both the PE and CE, and escalate the CE issue with IBM Support.
- D. Review the Patch Compatibility Matrix for supported configurations, review the CE interim fix Readme for pre-requisite and known issues, and reapply the fix using the Fix Pack Readme instructions.

Answer: D

QUESTION: 119

The IBM FileNet Process Engine is unable to start after an upgrade. Customer-provided background information (also known as MustGather data) is being requested by the IBM support engineer. What command should be run to gather operating system configuration and error reports on an HP-UX based system?

- A. `errpt -a`?
- B. `/usr/sbin/dmesg`

- C. /usr/sbin/prtdiag -v
- D. wevtutil epl System Systemlog.evtx?

Answer: B

QUESTION: 120

A P8 administrator fails to logon to an IBM FileNet P8 V5.1 system when using Workplace. FileNet Enterprise Manager (FEM) is able to connect to P8 without issues. The administrator would like to use log4j with Workplace to further troubleshoot the issue. In which directory should the log4j file be placed so that logging is enabled for Workplace?

- A. <install path>/FileNet/Config/AE
- B. <install path>/FileNet/Config/WebClient
- C. <install path>/FileNet/CEClient/config/samples
- D. <install path>/FileNet/AE/CE_API/config/samples

Answer: A

QUESTION: 121

The Process Engine is unable to start after an upgrade. Customer-provided background information (also known as MustGather data) is being requested by the IBM support engineer. What command should be run to gather operating system configuration and error reports on an AIX based system?

- A. errpt -a
- B. /usr/sbin/dmesg
- C. /usr/sbin/prtdiag -v
- D. wevtutil epl System Systemlog.evtx

Answer: A

QUESTION: 122

A fix pack for IBM FileNet Process Engine (PE), server and client, needs to be installed in an IBM FileNet P8 system consisting of a standalone Workplace XT (WPXT), a standalone Content Engine (CE), a single PE, a single IBM FileNet Case Analyzer, and a 2 node IBM Content Search Services system. IBM Enterprise

Records is installed with components on both the CE and WPXT application servers. Assume that the entire system can be brought off line for the fix pack installation. What is the minimum number of times the PE Client installer needs to be run to ensure all components are updated?

- A. 3
- B. 5
- C. 6
- D. 7

Answer: A

QUESTION: 123

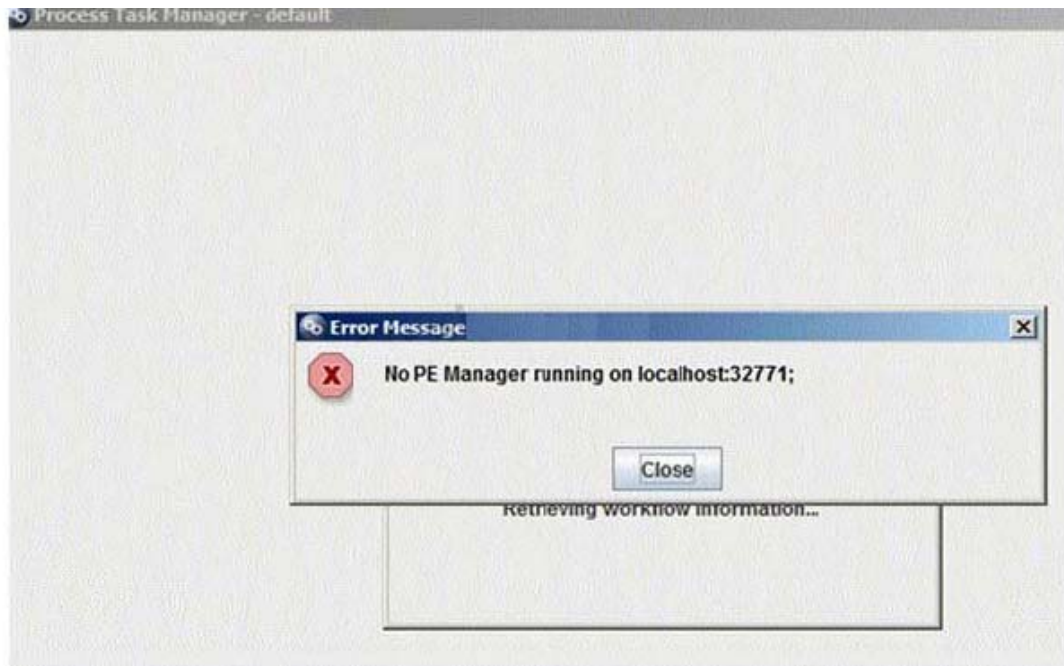
Users report to the P8 Administrator that they cannot logon to Workplace XT. The Application Server for Content Engine is up and running properly. The Administrator looks at the Application Server log and finds the following error:
===== Root Exception message:CORBA NO_RESPONSE
0x4942fb01 Maybe; nested exception is: org.omg.CORBA.NO_RESPONSE:
Request 15 timed out vmcid: IBM minor code: B01 completed: Maybe Connection not available while invoking method createOrWaitForConnection for resource [DATASOURCE_NAME]
===== What could be the cause of this error?

- A. Process Engine is down.
- B. The Content Engine's database is down.
- C. Application server of Workplace XT is down.
- D. The number of connections in the connection pool for the datasource has reached its maximum.

Answer: D

QUESTION: 124

The following error is displayed when an IBM FileNet P8 Administrator launches the Process Task Manager:



What is the reason that may cause this error?

- A. The Component Manager did not start.
- B. The Process Engine's database is down.
- C. The Process Engine Manager service did not start.
- D. The administrator did not start the Process Engine by running the "initfnsw start" command.

Answer: C

QUESTION: 125

A P8 administrator receives an error during the deployment of Workplace XT on an IBM WebSphere Application Server (WAS). Which log should be reviewed first?

- A. SystemOut.log
- B. p8_api_error.log
- C. p8_server_error.log
- D. p8_server_trace.log

Answer: A

QUESTION: 126

A customer is planning to install a new, highly available, IBM FileNet P8 environment that spans two data centers that are relatively close together and connected by very high speed, redundant, data connections. The network latency between data centers is less than 1 ms. One of the design goals of this enterprise tier implementation is to have both data centers be as active as possible regarding the processing of P8 data. IBM FileNet Enterprise Manager (FEM) will be configured to treat both data centers as a single site. WebSphere Application Server Network Deployment (WAS-ND) has been chosen to host Content Engine (CE) and Workplace XT (WPXT). Which of the following choices both meets the criteria of the scenario and follows IBM best practices?

A. Configure two WAS-ND cells, one for each site. In each cell, create one cluster for WPXT and one cluster for CE. Install the CE software on the WAS Deployment Manager node and deploy the EAR file to each CE cluster. Install WPXT on each cluster member node and deploy one WPXT EAR file to each WPXT cluster. Use hardware load balancers and HTTP proxy servers to spread client traffic across the two WPXT clusters' members. Configure each WPXT cluster to point to the CE cluster in its respective data center.

B. Configure WAS-ND as a single cell spanning both data centers. Create a cluster for WPXT with member nodes at both data centers. Create a cluster for CE with member nodes at both data centers. Install the CE software on the WAS Deployment Manager node and deploy the EAR file to the CE cluster. Install WPXT on each cluster member node and deploy one WPXT EAR file to the WPXT cluster. Use hardware load balancers and HTTP proxy servers to spread client traffic across the WPXT cluster's members. Configure WPXT to point to the members of the CE cluster.

C. Configure two WAS-ND cells, one for each site. In each cell, create one cluster for WPXT and one cluster for CE. Create the CE clusters with identical names. Install the CE software on the WAS Deployment Manager node and deploy the EAR file to each CE cluster. Install WPXT on each cluster member node and deploy one WPXT EAR file to each WPXT cluster. Use hardware load balancers and HTTP proxy servers to spread client traffic across the two WPXT clusters' members. Configure each WPXT cluster to point to a list of all CE cluster members across both data centers.

D. Configure WAS-ND as a single cell spanning both data centers. Create two clusters for WPXT, one for each data center. Create two clusters for CE, one for each data center. Install the CE software on the WAS Deployment Manager node and deploy the EAR file to each CE cluster. Install WPXT on each cluster member node (of each WPXT cluster) and deploy one WPXT EAR file to each WPXT cluster. Use hardware load balancers and HTTP proxy servers to spread client traffic across the two WPXT clusters' members. Configure each WPXT cluster to point to the CE cluster in its respective data center.

Answer: A

Download Full Version From <https://www.certkillers.net>



Pass your exam at First Attempt....Guaranteed!