



IBM

C2010-510

IBM Tivoli Monitoring V6.3 Administration

QUESTION: 60

What is the default Tivoli Enterprise Monitoring Server log path in a Linux/UNIX installation?

- A. /opt/IBM/ITM/Iogs
- B. /opt/IBM/ITM/itmLogs
- C. /opt/IBM/ITM/ITMinstall_dir
- D. /opt/IBM/ITM/<architecture>/ins/bin

Answer: C

Reference:

http://publib.boulder.ibm.com/infocenter/tivihelp/v63r1/index.jsp?topic=%2Fcom.ibm.itm.doc_6.2.3fp1%2Fitm623FP1_install197.htm

QUESTION: 61

When using a warehouse proxy agent to connect to the Tivoli Data Warehouse IBM DB2 server, how can the SYSADM group name for DB2 be determined for UNIX/Linux?

- A. Use Smitty to query the SU GROUPS.
- B. Issue the command `lsgroup SYSADM`.
- C. Connect to DB2 and issue the command `db2 get dbm cfg | grep SYSADM`.
- D. Connect to DB2 and issue the query `db2 select GROUPS from sysibm.sysattributes`.

Answer: C

QUESTION: 62

The pdcollect tool is responsible for which task(s)?

- A. To gather log files, configuration information, and version information.
- B. To enhance the application by installing product-specific plug-in modules for the IBM products.
- C. To diagnose if workspaces are missing or empty and check if application support has been added.
- D. To give information about the health of managed systems, situations, and environment configuration.

Answer: A

Reference:

http://publib.boulder.ibm.com/infocenter/ieduasst/tivv1r0/topic/com.ibm.iea.itm/itm/6.2.1/troubleshooting/reading_itm_agent_logs_lctn.pdf?dmuid=20121228155818781154(page 8)

QUESTION: 63

What does the itmcmd login -s terns -u itm command do?

- A. It logs in with user itm in the Tivoli Enterprise Monitoring Server (TEMS) at terns server.
- B. It logs in with user terns in the TEMS at itm server.
- C. It logs in with user itm in the TEMS terns at localhost.
- D. It logs in with user terns in the TEMS itm at localhost.

Answer: B

QUESTION: 64

In a custom navigator view, the association of correlated situations requires the assignment of which component?

- A. portal server
- B. monitoring agent
- C. hub monitoring server
- D. remote monitoring server

Answer: B

QUESTION: 65

Which two actions are possible when installing and configuring a remote Tivoli Enterprise Monitoring Server (TEMS)?

- A. configure a SOAP hub
- B. provide the name of the hub TEMS

- C. enableUser Validation through LDAP
- D. configure the server dashboard activity
- E. enter the listening port number for IP protocols

Answer: A, E

QUESTION: 66

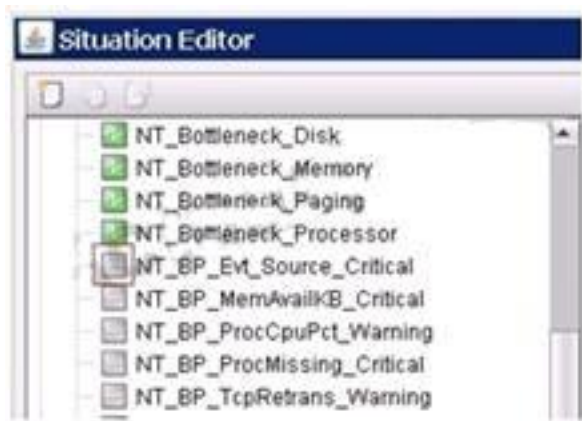
Which statement is true about History Collection Configuration?

- A. The Interval Collection option directly impacts the space required in the database.
- B. The Collection Location option directly impacts the space required in the database.
- C. The Warehouse Interval option directly impacts the space required in the database.
- D. The Summarization and Pruning agent can warehouse data if the Warehouse Proxy agent fails.

Answer: C

QUESTION: 67

In the Situation Editor window, what is the meaning of the grey icon near the NT_BP_Evt_Source_Critical situation?



- A. The situation has not yet started.
- B. The situation has not been distributed.
- C. The situation has not yet saved in the Situation Editor.
- D. The NT application support files were not seeded to the Tivoli Enterprise Portal

Server.

Answer: A

QUESTION: 68

How can a clear alert be sent indicating that a custom workflow has been reset to normal?

- A. At the end of the workflow, the clear alert will be sent.
- B. At the end of the report, put in a choice that sends the clear alert.
- C. At the end of the workflow, put in a wait until false that the situation has cleared.
- D. At the end of the workflow, put in a choice and have an action to send an SNMP trap.

Answer: B

QUESTION: 69

Which selection checks that the database used by the Tivoli Data Warehouse is up and running?

- A. itmcmcl connect TDW ITM
- B. itmcmcl connect to TDW -u itmuser -p password
- C. db2 connect to TDW user itmuser using password
- D. db2 connect db2inst1 to TDW using password root123 priority immediate

Answer: C

QUESTION: 70

Which tool converts trace log time stamps into readable values?

- A. ras2txt
- B. rasllog
- C. kdslgfm
- D. PDCollect

Answer: B

Reference:

<http://www->

01.ibm.com/support/knowledgecenter/SSTFXA_6.2.3/com.ibm.itm.doc_6.2.3/itm623_troubleshoot_51.htm%23ras1log

Download Full Version From <https://www.certkillers.net>



DON'T KNOW
OR NO PREFERENCE

Pass your exam at First Attempt....Guaranteed!