



**IBM**

**A4040-332**

*Accessment: High Availability for AIX - Technical Support and Administration -v2*

D. Dynamic cluster reconfiguration

**Answer:** B

**QUESTION:** 118

When configuring a PowerHA Enterprise Edition cluster using San Volume Controller (SVC) replication, what other software must be installed and configured on the cluster nodes?

- A. Remote Shell
- B. Secure Shell
- C. SVC Storage Manager
- D. SVC Command Line Interface

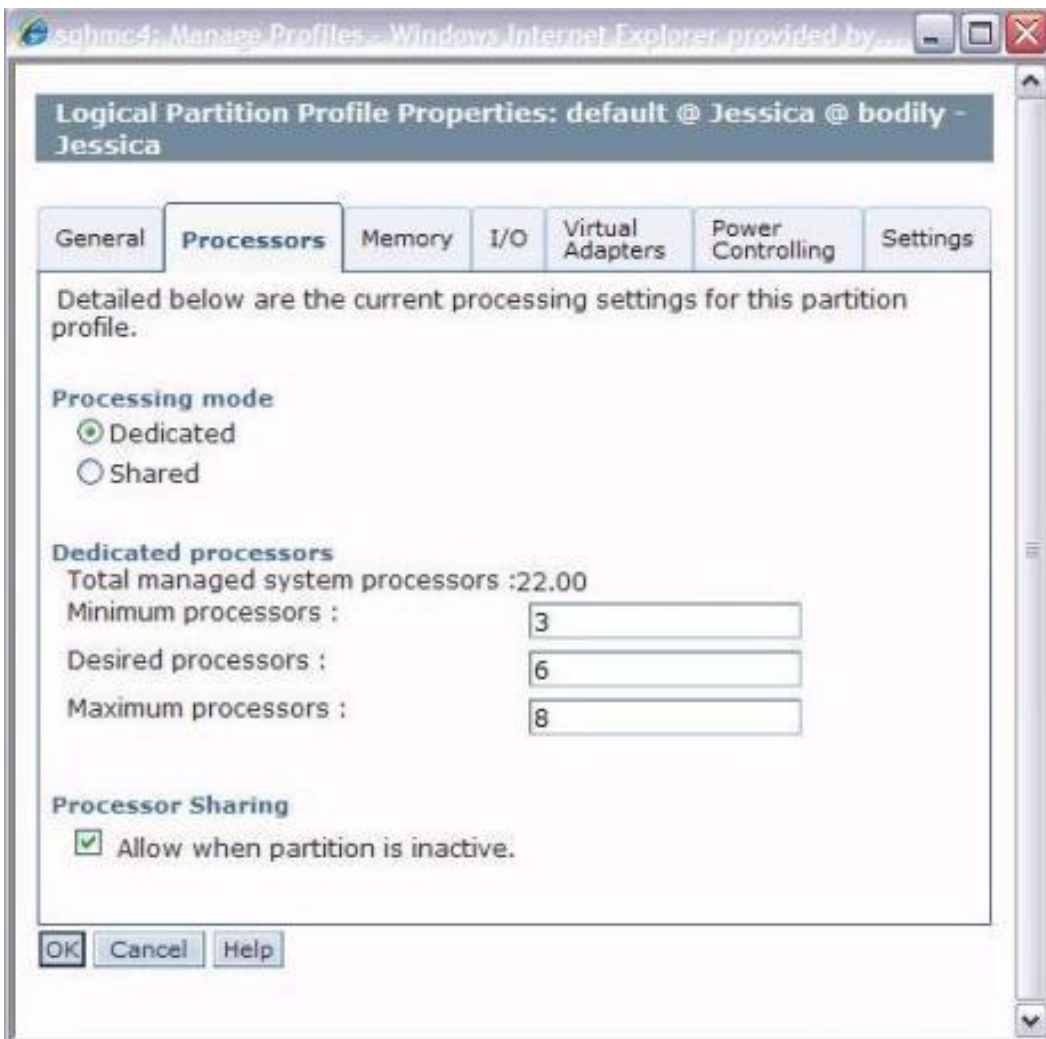
**Answer:** B

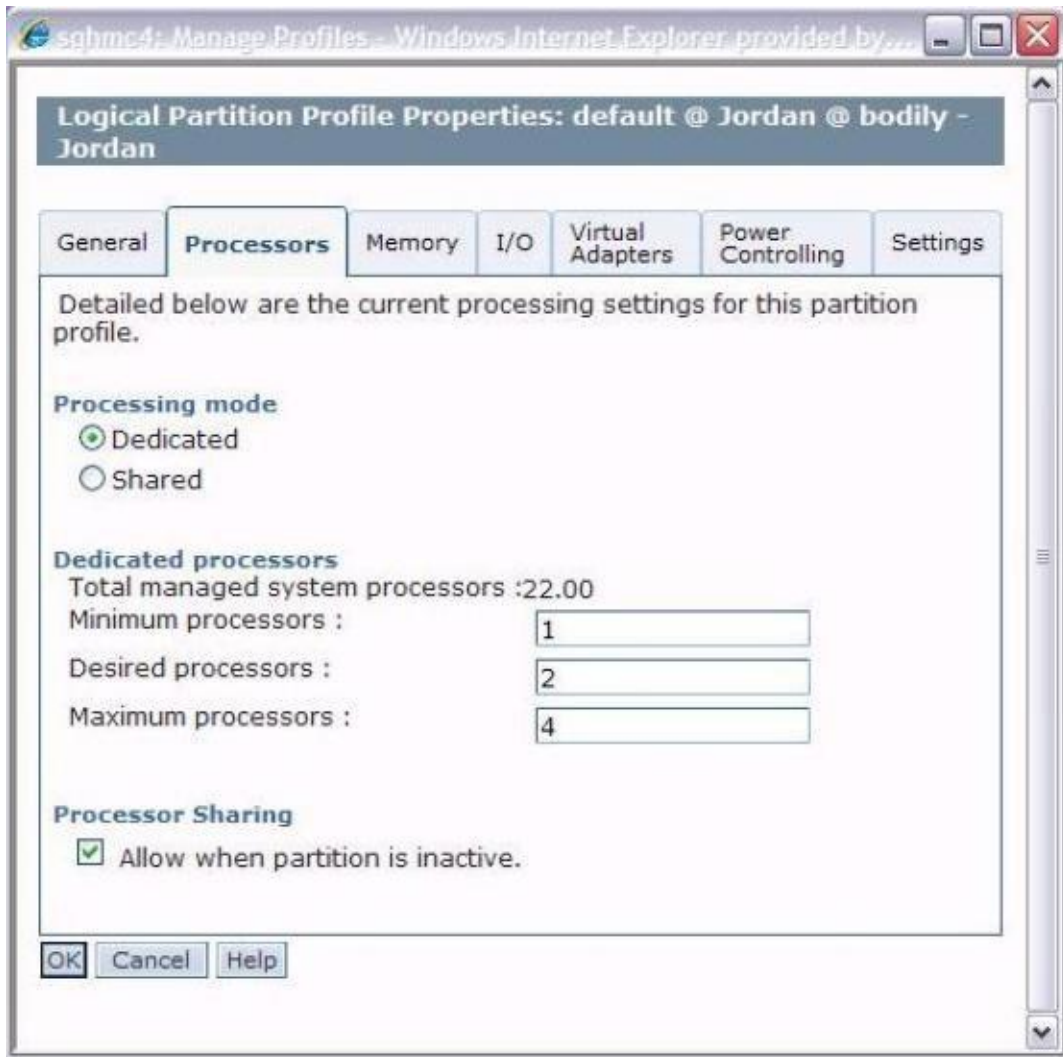
**QUESTION:** 119

Given the following information, how many processing units will be available when migtestrg is started on the standby node?

```
Add Dynamic LPAR and CoD Resources for Applications
Type or select values in entry fields.
Press Enter AFTER making all desired changes.

* Application Controller Name           [Entry Fields] testapp
* Minimum number of processing units   [ 0.00]
* Desired number of processing units   [ 0.00]
* Minimum number of CPUs               [3] #
* Desired number of CPUs               [3] #
* Minimum amount of memory (in megabytes) [20480] #
* Desired amount of memory (in megabytes) [40960] #
* Use CUoD if resources are insufficient? [no] +
* I agree to use CUoD resources         [no] +
  (Using CUoD may result in extra costs)
```





```
Resource Group Name      migtestrg
Participating Node Name(s)  jessica jordan
Startup Policy            Online On Home Node Only
Failover Policy           Fallover To Next Priority Node In The List
Fallback Policy           Never Fallback
Site Relationship         ignore
Dynamic Node Priority
Service IP Label          ha_svc
Volume Groups             datavg
Application Servers       testapp
```

- A. 3
- B. 4
- C. 5
- D. 6

**Answer:** B

**QUESTION:** 120

What is required when configuring a disk heartbeat device in a PowerHA 6 cluster?

- A. Must be on a shared data volume group disk
- B. Must be an enhanced concurrent volume group
- C. Must be on a shared disk dedicated for diskhb
- D. Must be a resource in a resource group for both nodes

**Answer:** B

**QUESTION:** 121

What application specific requirement will prevent it from being used in a PowerHA 7 cluster?

- A. Application must be used with NFSv3
- B. Application must be installed on rootvg
- C. Application must use a specific hostname
- D. Application must be installed on sharedvg

**Answer:** C

**QUESTION:** 122

If an application stop script fails during selective failover process, which action will recover the production service as soon as possible?

- A. Wait for time-out via config\_too\_long event.
- B. Select "Recover From HACMP Script Failure" from SMIT
- C. Halt the node on which application stop script has failed.
- D. Force shutdown all nodes in the cluster for data integrity.

**Answer:** C

**QUESTION:** 123

A customer notices the following event in hacmp.out.

EVENT START: cluster\_notify NODE1 1 Sep 15 00:01:53 NOTIFY COMMAND:  
/usr/es/sbin/cluster/utilities/clissuepage NODE1 clverify has detected cluster configuration errors on node NODE1. Why did this event occur?

- A. Automatic error notification has detected a cluster error and notified the dstrmgrES.
- B. Cluster verification has been initiated by the administrator and errors have been logged to hacmp.out.

- C. Automatic cluster verification has been configured and an error was detected with the cluster configuration.
- D. Notification has been sent that the cluster test tool automated procedure completed and has been logged in hacmp.out.

**Answer:** C

**QUESTION:** 124

Which fileset must be installed to enable message authentication and encryption?

- A. rsct.crypt
- B. rsct.core.sec
- C. cluster.es.cfs
- D. cluster.es.crypt

**Answer:** A

**QUESTION:** 125

A 2-node cluster has startup monitoring. The Action on Application failure of monitoring is set to "notify." The startup policy of the cluster is "Online on Home Node Only." The home node is Node1. Node 2 is up. If startup monitoring detects a failure during Node 1 startup, what will the state of the resource group be?

- A. ERROR Node1 ONLINE Node2
- B. ERROR Node1 OFFLINE Node2
- C. OFFLINE Node1 ONLINE Node2
- D. OFFLINENode1 OFFLINE Node2

**Answer:** C

**QUESTION:** 126

A shared volume group (VG) was created in a PowerHA 7 environment. Given the following example, what must be changed in the VG definition?

```
root@lpar101[~/]# lsvg datavg01
VOLUME GROUP:      datavg01                VG IDENTIFIER: 00c08bb600004c00000001367e2d80fb
VG STATE:          active                    PP SIZE:      16 megabyte(s)
VG PERMISSION:    read/write                TOTAL PPs:    639 (10224 megabytes)
MAX LVs:          256                       FREE PPs:     627 (10032 megabytes)
LVs:              2                         USED PPs:     12 (192 megabytes)
OPEN LVs:         0                         QUORUM:       2 (Enabled)
TOTAL PVs:        1                         VG DESCRIPTORS: 2
STALE PVs:        0                         STALE PPs:    0
ACTIVE PVs:       1                         AUTO ON:      no
MAX PPs per VG:   32512                     MAX PVs:      32
MAX PPs per PV:   1016                       AUTO SYNC:    no
LTG size (Dynamic): 256 kilobyte(s)         BB POLICY:    non-relocatable
HOT SPARE:        no                         INFINITE RETRY: no
PV RESTRICTION:  none
root@lpar101[~/]#
```

- A. Set QUORUM to 1(Disabled).
- B. Set BB POLICY to relocatable.
- C. Set concurrent capable to enhanced concurrent.
- D. Set hot spare characteristics to yes(one to one).

**Answer:** C

**QUESTION:** 127

Complete the following statement:

With a cluster using EtherChannel backup for high availability of network interfaces, the netmon.cf file setting is not needed for local network failure detection if EtherChannel backup has \_\_\_\_\_:

- A. address to ping attribute
- B. multiple EtherChannel devices
- C. alternate EtherChannel address
- D. enabled automatic recovery after failover

**Answer:** A

**QUESTION:** 128

The db\_group resource group become unmanaged after cluster service on node1 is forced down. Which action will change the state of db\_group resource group from unmanaged to Online on node2?

- A. Bring db\_group Online directly on node2
- B. Move resource group db\_group from node1 to node2
- C. Bring db\_group offline and then bring db\_group Online on node2
- D. Run clchres utility to change the state of db\_group resource to Online on node2

**Answer:** C

**QUESTION:** 129

An administrator has written a custom verification method script and wants it distributed to all nodes in the cluster during cluster synchronization. Which file collection should be changed to "Propagate files during cluster synchronization?"

- A. HACMP\_Cust
- B. HACMP\_Files
- C. HACMP\_Events
- D. Configuration\_Files

**Answer:** B

**QUESTION:** 130

After changing a PowerHA 6 cluster to reflect new IP addresses, an administrator attempts to synchronize a cluster and receives the following message: cldare: A communication error prevents obtaining the VRMF from remote nodes. A DARE cannot be run until this is corrected. Please ensure clcmd is running. How can the administrator correct this error?

- A. Include the new IP addresses in /.rhosts on all cluster nodes.
- B. Include the new IP addresses in /etc/hosts.equiv on all cluster nodes.
- C. Include the new IP addresses in /usr/es/sbin/cluster/etc/rhosts on all cluster nodes.
- D. Include the new IP addresses in /usr/es/sbin/cluster/etc/clhosts on all cluster nodes.

**Answer:** C

**QUESTION:** 131

A new application is added to the cluster and verification produces an error. What is the most likely reason?

- A. The application is running on one of the cluster nodes.
- B. Some application dependencies are missing from one or more nodes in the resource group.
- C. The application start script is not executable on one of the nodes in the resource group.
- D. The size of the application start script is not the same on all of the nodes in the resource group.

**Answer:** C



Download Full Version From <https://www.certkillers.net>



**DON'T KNOW**  
OR NO PREFERENCE

*Pass your exam at First Attempt....Guaranteed!*