



ADOBE

9A0-040

Adobe Premiere Pro

Answer: A

QUESTION: 122

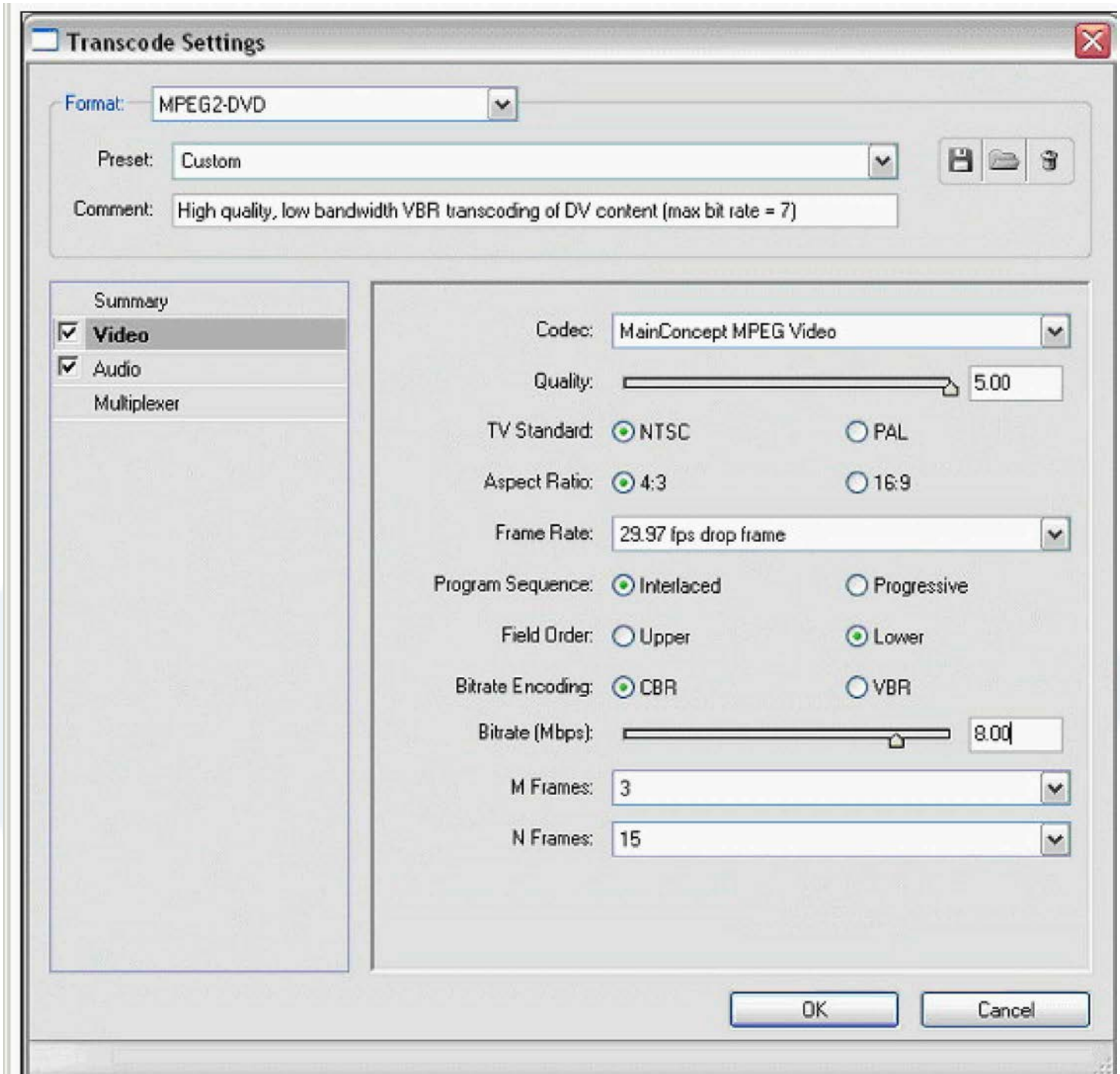
You want to export your sequence with an alpha channel for later import into an NTSC DV project. Which compression method should you choose in the Export Movie Settings dialog box?

- A. Microsoft DV
- B. QuickTime Cinepak
- C. QuickTime Sorenson
- D. Uncompressed Microsoft .AVI with millions of colors+

Answer: D

QUESTION: 123

Click the Exhibit button. You are exporting the timeline using the Adobe Media Encoder as shown in the exhibit. What effect will happen if you decrease the quality from 5 to 3 have?

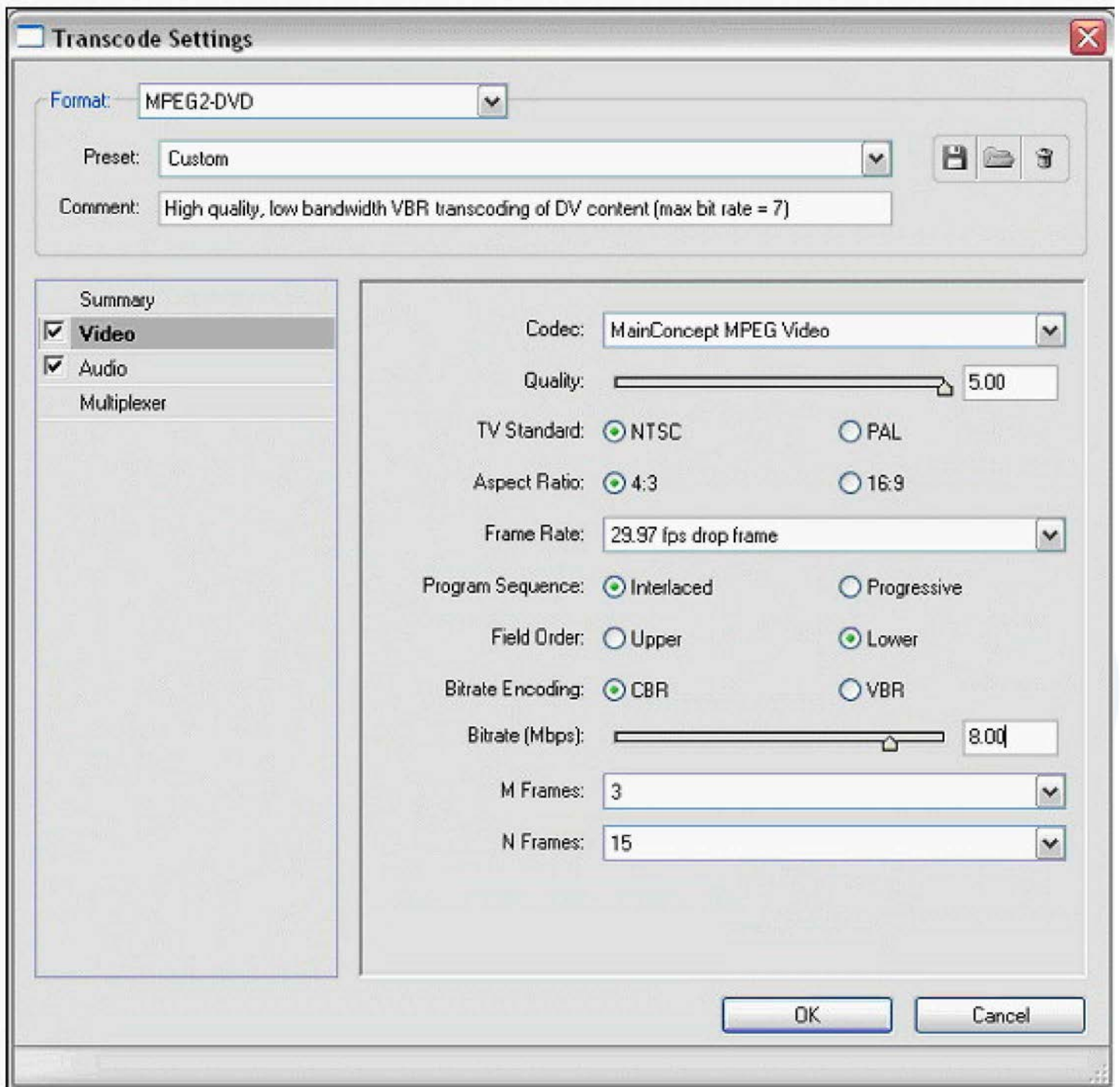


- A. Increase the quality of the exported file
- B. Reduce the interlacing of the exported file
- C. Reduce the time it takes to encode the file
- D. Increase the time it takes to encode the file

Answer: C

QUESTION: 124

Click the Exhibit button. You are exporting the timeline using the Adobe Media Encoder as shown in the exhibit. What effect will decreasing the bitrate from 8.00 to 5.00 have?



- A. Reduce the file size of the exported file
- B. Reduce the frame rate of the exported file
- C. Reduce the frame size of the exported file
- D. Reduce the number of fields in the exported file

Answer: A

QUESTION: 125

You are working with a sequence that will be exported to a movie for streaming Web playback. Which three encoding formats should you choose? (Choose three)

- A. MPEG2
- B. MPEG1
- C. RealMedia
- D. QuickTime
- E. Microsoft DV
- F. Windows Media

Answer: C, D, F

QUESTION: 126

You want to export your sequence to an NTSC DV movie for use in future NTSC DV projects. Which video options should you choose in the Export Movie Settings dialog box?

- A. 720 x 480 Frame Size; No Fields (Progressive Scan); 15 fps Non Drop-Frame Timecode; Square Pixels (1.0).
- B. 320 x 240 Frame Size; No Fields (Progressive Scan); 15 fps Non Drop-Frame Timecode; Square Pixels (1.0).
- C. 720 x 480 Frame Size; Lower Fields First; 29.97 fps Drop Frame Timecode; D1/DV NTSC (0.9) Pixel Aspect Ratio.
- D. 720 x 486 Frame Size; Lower Fields First; 29.97 fps Drop Frame Timecode; D1/DV NTSC (0.9) Pixel Aspect Ratio.

Answer: C

Download Full Version From <https://www.certkillers.net>



DON'T KNOW
OR NO PREFERENCE

Pass your exam at First Attempt....Guaranteed!