



Microsoft

70-981

IBM FileNet Content Manager V5.2 Specialist

QUESTION: 119

DRAG DROP

You have a System Center 2012 Virtual Machine Manager (VMM) infrastructure. You plan to create profiles. You need to identify which settings can be applied to each profile type. Which settings should you identify? To answer, drag the appropriate setting or settings to the correct profile type or profile types in the answer area. (Each setting may be used once, more than once, or not at all.)

Configurations	Answer Area			
	Application Profile	Guest OS Profile	Hardware Profile	Host Profile
Number of processors	Configuration	Configuration	Configuration	Configuration
OS compatibility				
Product key				

Answer:

Configurations	Answer Area			
	Application Profile	Guest OS Profile	Hardware Profile	Host Profile
Number of processors		Product key	Number of processors	Product key
OS compatibility	OS compatibility			
Product key				

QUESTION: 120

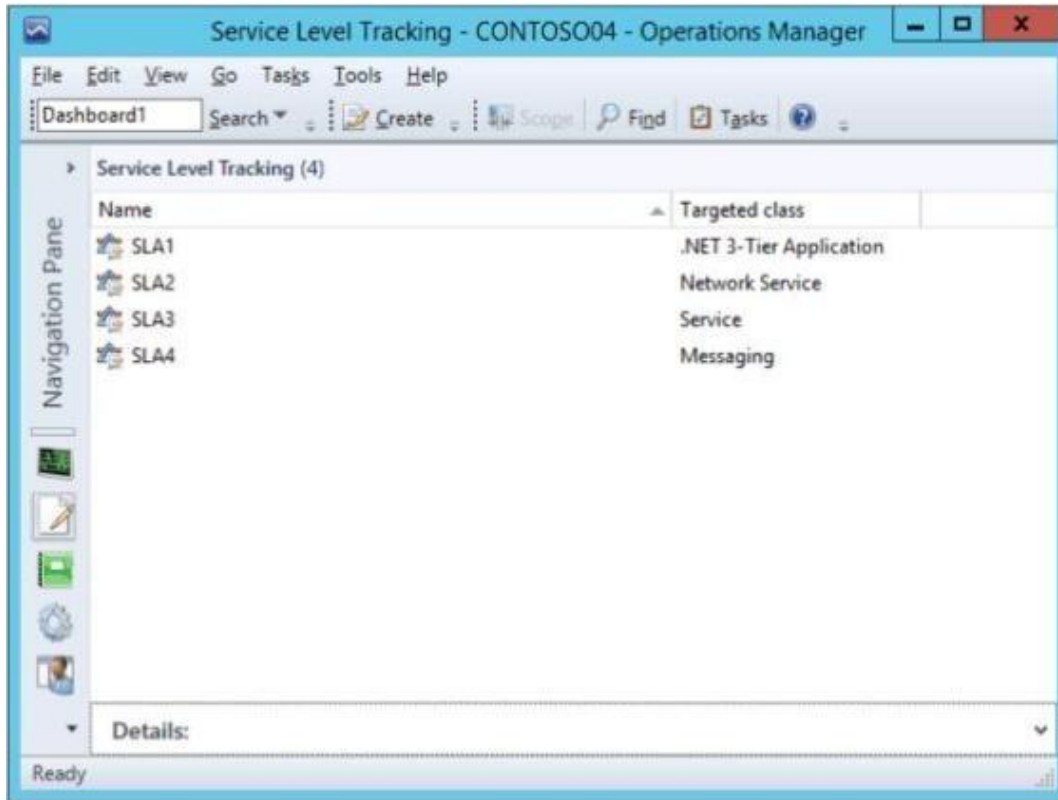
Your company uses System Center 2012 R2 Operations Manager. A technician manually installs the Microsoft Monitoring Agent on a server named Server1. You discover that the agent is configured to use the wrong primary management server. You need to change the primary management server used by Server1. What should you do on Server1?

- A. From the properties of the Microsoft Monitoring Agent, edit the management group and restart Microsoft Monitoring Agent service.
- B. From Notepad, edit Monitoringhost.exe.config and restart the Microsoft Monitoring Agent service.
- C. From the properties of the Microsoft Management Agent, remove the management group and add a new management group.
- D. From File Explorer, run momagent.msi and select Repair.

Answer: D

QUESTION: 121
HOTSPOT

You have a private cloud that contains a System Center 2012 R2 infrastructure. You have the service level tracking objects configured as shown in the exhibit (Click the Exhibit button.)



Use the drop-down menus to select the answer choice that completes each statement.

Answer Area

A dashboard that includes [answer choice] will display application reliability.

A dashboard that includes [answer choice] will display the status of Windows services.

Answer Area

A dashboard that includes [answer choice] will display application reliability.

SLA1
SLA2
SLA3
SLA4

A dashboard that includes [answer choice] will display the status of Windows services.

SLA1
SLA2
SLA3
SLA4

Answer:

Answer Area

A dashboard that includes [answer choice] will display application reliability.

SLA1
SLA2
SLA3
SLA4

A dashboard that includes [answer choice] will display the status of Windows services.

SLA1
SLA2
SLA3
SLA4

QUESTION: 122

DRAG DROP

Your network contains an Active Directory domain named adatum.com. You plan to install System Center 2012 Virtual Machine Manager (VMM) on a server in the domain. You create a failover cluster that contains two nodes named Node1 and Node2. You configure an account named adatum\scvmm as the service account for VMM. You start installing VMM 2012 on Node1. You need to ensure that the encryption keys used by VMM are available on Node1 and Node2. Which three actions should you perform in sequence? (To answer, move the appropriate actions from the list of actions to the answer area and arrange them in the correct order.)

Actions	Answer area
Create a folder named Data1 on each node.	
Click the Local key management option during the setup of VMM.	
Assign the Read permissions to adatum\scvmm on Data1.	
Click the Distributed key management option during the setup of VMM.	
Create a container in adatum.com named SCVMM1.	
Assign the Read, Write, Create All Child objects permissions to contoso\scvmm on SCVMM1.	

Answer:

Actions	Answer area
Create a folder named Data1 on each node.	Create a container in adatum.com named SCVMM1.
Click the Local key management option during the setup of VMM.	Assign the Read, Write, Create All Child objects permissions to contoso\scvmm on SCVMM1.
Assign the Read permissions to adatum\scvmm on Data1.	Click the Distributed key management option during the setup of VMM.
Click the Distributed key management option during the setup of VMM.	
Create a container in adatum.com named SCVMM1.	
Assign the Read, Write, Create All Child objects permissions to contoso\scvmm on SCVMM1.	

QUESTION: 123

Your company has a primary data center and a secondary data center. The primary data center contains five servers. The servers are configured as shown in the following table.

Server name	Role
Server1	Microsoft Exchange Server 2013
Server2	Microsoft SharePoint Server 2010
Server3	Hyper-V host
Server4	File server
Server5	Microsoft System Center 2012 R2 Data Protection Manager (DPM)

You plan to configure Server5 to protect the data from all of the servers on the network. You need to recommend a backup solution that meets the following requirements:

- ☞ The data must be available if the primary data center fails.
- ☞ The solution must retain data for up to two years.

Which two actions should you include in the recommendation? Each answer presents part of the solution.

- A. Deploy a secondary DPM server to the primary data center and configure the new DPM server to protect Server5.
- B. Deploy a primary DPM server to the secondary data center and configure the new DPM server to protect the physical disks on Server5.
- C. On Server5, back up the data on all of the protected servers to Windows Azure Recovery Services.
- D. Deploy a secondary DPM server to the secondary data center and configure the new DPM server to protect Server5.
- E. On Server5, back up the data on all of the protected servers to physical disks.

Answer: C, D

QUESTION: 124

Your network contains an Active Directory domain. The domain contains two servers named Server1 and Server2. Server1 has System Center 2012 Virtual Machine Manager (VMM) installed. Server2 has System Center 2012 Operations Manager installed. You need to configure Operations Manager to monitor the VMM infrastructure. Which three management packs should you install on Server2? (Each correct answer presents part of the solution. Choose three.)

- A. the Internet Information Services 7 Monitoring Management Pack
- B. the Microsoft SQL Server Monitoring Management Pack
- C. the File Services Management Pack
- D. the Windows Server Hyper-V Management Pack
- E. the Monitoring Pack for Active Directory (AD)
- F. the Windows Server Operating System Management Pack
- G. Windows Server DNS 2003/2008/2008 R2 Monitoring Management Pack

Answer: A, B, F

QUESTION: 125

You configure the System Center 2012 Service Manager connector for System Center 2012 Virtual Machine Manager (VMM). You need to ensure that users can access the VMM data from the System Center Service Manager console. Which two tasks should you perform from the System Center Service Manager console? (Each correct answer presents part of the solution. Choose two.)

- A. Import the VMM management packs.
- B. Create a catalog group.
- C. Create a type projection.
- D. Import the VMM classes by using the CSV connector.
- E. Create views based on VMM classes.

Answer: A, E

For More exams visit <https://killexams.com> -



DON'T KNOW
OR NO PREFERENCE

Pass your exam at First Attempt....Guaranteed!