



Microsoft

70-687

Configuring Windows 8 (8.1)

Further Information:

<http://technet.microsoft.com/en-us/library/hh848662.aspx> Repair-Volume Performs repairs on a volume. Parameters .. -Scan Scans the volume.

QUESTION: 62

A company has 0 client computers that run various editions of Windows 7. The company plans to upgrade or replace computers so that all client computers run an edition of Windows 8.1. The company plans to use the following programs and features on the Windows 8.1 computers: 32-bit and 64-bit software Desktop apps Windows Media Player Storage Spaces You need to identify the installation or upgrade paths that support the programs and features. Which three paths meet the requirements? (Each correct answer presents a complete solution. Choose three.)

- A. Purchase hardware with Windows RT pre-installed.
- B. Perform a clean installation of Windows RT.
- C. Perform a clean installation of Windows 8.1 Pro.
- D. Perform a clean installation of Windows 8.1.
- E. Upgrade from Windows 7 Enterprise to Windows 8.1 Enterprise.

Answer: C, D, E

Explanation:

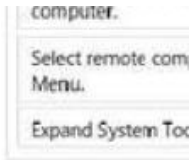
<http://www.microsoft.com/en-us/windows/enterprise/products-and-technologies/windows-8-1/compare/default.aspx>

Compare Windows 8.1 Editions

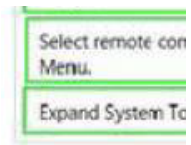
QUESTION: 63

DRAG DROP

You are on a company's desktop support team. You receive a call from an employee. The employee is having problems installing an old printer on a Windows 8.1 Pro computer. The employee asks you to look at the driver that is installed and assess if it is the correct one. You need to open the device manager remotely.



Answer:



QUESTION: 64

You are a desktop engineer for a small company. Your sales associates currently use Windows 7 computers that run Windows XP Mode for a legacy business application.

You are deploying new computers for your sales associates due to life cycle management. You have the following requirements:

Ⓓ The new computers must run Windows 8.1 and have Hyper-V installed.

Ⓓ The Windows XP Virtual Machines (VM) should be isolated from the host machine on your network and from other VMs. You need to create a virtual switch to meet these requirements. Which type of switch should you use?

- A. Private switch
- B. External switch
- C. Distributed switch
- D. Internal switch

Answer: A

Explanation:

<http://ffwindows.microsoft.com/en-us/windows7/install-and-use-windows-xp-mode-in-windows-7> Install and use Windows XP Mode in Windows 7 Using Windows XP Mode, you can run programs that were designed for Windows XP on computers running Windows 7 Professional, Enterprise, or Ultimate editions. Windows XP Mode isn't supported on Windows 8. How does Windows XP Mode work? Windows XP Mode works in two ways — both as a virtual operating system and as a way to open programs within Windows 7. It runs in a separate window on the Windows 7 desktop, much like a program, except it's a fully-functional, fully-licensed version of Windows XP. In Windows XP Mode, you can access your physical computer's CD/DVD drive, install programs, save files, and perform other tasks as if you were using a computer running Windows XP. When you install a program in Windows XP Mode, the program appears in both the Windows XP Mode list of programs and in the Windows 7 list of programs, so you can open the program directly from Windows 7.



Programs installed in Windows XP Mode in the Windows 7 Start menu

<http://fjohn.bryntze.net/fjbkb-v2/certification-exam-70-687-configuring-windows-8-part-2/configure-hardware-and-applications-16/>

Virtual switches of Hyper-V VLAN – you can create 3 different types of virtual switches depending on the needs of your virtual machines and one single machine can use multiple virtual NICs that are members of different Virtual Switches.

External – This virtual switch binds to the physical network adapter and creates a new adapter you

can see in Control Panel\Network and Internet\Network Connections so if a virtual machine needs contact outside the host machine this one is a must.

Internal – This virtual switch can be used to connect all virtual machines and the host machine but cannot go outside that. Private – This virtual switch can only be used by the virtual host

<http://technet.microsoft.com/en-us/library/cc816585%28v=ws.29.aspx>

Hyper-V Networking: Three types of Virtual Networks:

Type	Parent OS	VMs on Same HV	VMs on Remote HV	LAN	Remark
External	x	x	x	x	Conn. Lost Temporarily
Internal	x	x			
Private		x			
Dedicated		x		x	

QUESTION: 65

HOTSPOT

You are a consultant traveling out of town. You are carrying a Windows 8.1 Pro laptop that you use for giving presentations while connected to a projector.

You are concerned about battery life while presenting and need to modify your power settings to maximize battery life without risking interrupting your presentation.

Answer:



QUESTION: 66

DRAG DROP

A company has Windows 8.1 client computers. You purchase a Windows Store app and

install the app on several computers. Application is installed fails. You reinstall Windows 8.1. You need to reinstall the Windows Store app on the computer.

Log on to the computer with your Microsoft account and administrative privileges.
Display your purchased apps, select the app you need to reinstall, and then click **Install**.

Answer:

Actions	Answer Area
Log on to the computer with your Microsoft account.	Log on to the computer with your Microsoft account.
Open the Programs and Features Control Panel item.	
Reinstall the app from the Currently installed programs list.	Display the Accounts and Preferences page of the Windows Store.
Display the Accounts and Preferences page of the Windows Store.	Display your purchased apps, select the app you need to reinstall, and then click Install .
Log on to the computer with a local account that has administrative privileges.	
Display your purchased apps, select the app you need to reinstall, and then click Install .	

For More exams visit <https://killexams.com> -



DON'T KNOW
OR NO PREFERENCE

Pass your exam at First Attempt....Guaranteed!