



Microsoft

70-680 Exam

Microsoft TS: Windows 7,Configuring Exam

Thank you for Downloading 70-680 exam PDF Demo

You can Buy Latest 70-680 Full Version Download

<https://www.certkillers.net/Exam/70-680>

<https://www.certkillers.net>

Question: 1

Your network consists of an Active Directory domain and a DirectAccess infrastructure. You install Windows 7 on a new portable computer and join the computer to the domain. You need to ensure that the computer can establish DirectAccess connections. What should you do?

- A. Install a computer certificate.
- B. Create a new network connection.
- C. Enable the Network Discovery firewall exception.
- D. Add the computer account to the Network Configuration Operators group.

Answer: A

Explanation:

Certificates

The DirectAccess IPsec session is established when the client running Windows 7 and the DirectAccess server authenticate with each other using computer certificates. DirectAccess supports only certificate-based authentication.

DirectAccess Client Configuration

Clients receive their DirectAccess configuration through Group Policy. This differs from traditional VPN configuration where connections are configured manually or distributed through the connection manager administration kit. Once you have added the computer's client account to the designated security group, you need to install a computer certificate on the client for the purpose of DirectAccess authentication. An organization needs to deploy Active Directory Certificate Services so that clients can automatically enroll with the appropriate certificates.

Question: 2

You have a portable computer named Computer1 that runs Windows 7. You have a file server named Server1 that runs Windows Server 2008. Server1 contains a shared folder named Share1.

You need to configure Computer1 to meet the following requirements:

- Ensure that cached files from Share1 are encrypted.
- Ensure that files located in Share1 are available when Server1 is disconnected from the network.

What should you do?

- A. On Server1, encrypt the files in Share1. On Computer1, make Share1 available offline.
- B. On Server1, configure BitLocker Drive Encryption. On Computer1, make Share1 available offline.
- C. On Computer1, make Share1 available offline and enable encryption of offline files.
- D. On Computer1, copy the files from Share1 to the Documents library and configure BitLocker Drive Encryption.

Answer: C

Explanation:

Offline Files

The Offline Files feature of Windows 7 allows a client to locally cache files hosted in shared folders so that they are accessible when the computer is unable to connect directly to the network resource. The Offline Files feature is available to users of the Professional, Enterprise, and Ultimate editions of Windows 7. You can use the Offline Files feature to ensure access when a client computer is out of the office or when a temporary disruption, such as a wide area network (WAN) link failing between a branch office and a head office, blocks access to specially configured shared folders.

Using Sync Center

You can use Sync Center to synchronize files, manage offline files, and resolve synchronization conflicts manually. Sync Center is located within the Control Panel or by typing Sync Center into the Search Programs and Files text box on the Start menu. Clicking Manage Offline Files opens the Offline Files. This dialog box is also available using the Offline Files control panel. Using this dialog box, you can disable offline files, view offline files, configure disk usage for offline files, configure encryption for offline files, and configure how often Windows 7 should check for slow network conditions.



Question: 3

You have a computer named Computer1 that runs Windows Vista and a computer named Computer2 that runs Windows 7. You plan to migrate all profiles and user files from Computer1 to Computer2. You need to identify how much space is required to complete the migration.

What should you do?

- A. On Computer1 run Loadstate c:\store /nocompress
- B. On Computer1 run Scanstate c:\store /nocompress /p
- C. On Computer2 run Loadstate \\computer1\store /nocompress
- D. On Computer2 run Scanstate \\computer1\store /nocompress /p

Answer: B

Explanation:

ScanState

You run ScanState on the source computer during the migration. You must run ScanState.exe on computers running Windows Vista and Windows 7 from an administrative command prompt. When running ScanState on a source computer that has Windows XP installed, you need to run it as a user that is a member of the local administrators group. The following command creates an encrypted store named Mystore on the file share named Migration on the file server named Fileserver that uses the encryption key Mykey: scanstate \\fileserver\migration\mystore /i:migapp.xml /i:miguser.xml /o /config:config.xml /encrypt /key:"mykey"

Space Estimations for the Migration Store

When the ScanState command runs, it will create an .xml file in the path specified. This .xml file includes improved space estimations for the migration store. The following example shows how to create this .xml file: Scanstate.exe C:\MigrationLocation [additional parameters] /p:"C:\MigrationStoreSize.xml" To preserve the functionality of existing applications or scripts that require the previous behavior of USMT, you can use the /p option, without specifying "pathtoafire", in USMT 4.0. If you specify only the /p option, the storage space estimations are created in the same manner as with USMT 3.x releases.

User State Migration Tool

USMT 4.0 is a command-line utility that allows you to automate the process of user profile migration. The USMT is part of the Windows Automated Installation Kit (WAIK) and is a better tool for performing a large number of profile migrations than Windows Easy Transfer. The USMT can write data to a removable USB storage device or a network share but cannot perform a direct side-by-side migration over the network from the source to the destination computer. The USMT does not support user profile migration using the Windows Easy Transfer cable. USMT migration occurs in two phases, exporting profile data from the source computer using ScanState and importing profile data on the destination computer using LoadState.

Question: 4

You work in an international company which is named Wiikigo. Before entering this company, you have two years of experience in the IT field, as well as experience implementing and administering any Windows client operating system in a networked environment.

You are professional in installing, upgrading and migrating to Windows 7, deploying Windows 7, and configuring Hardware and Applications and son on.

You have a workgroup which contains five computers. Windows 7 is run by the computers. A computer named C01 has video and audio files.

You have to share C01s video and audio files on the network.

What should you do? (Choose more than one)

- A. Connect a removable drive and enable BitLocker To Go.
- B. A HomeGroup should be created.
- C. The files should be moved to a Media Library.
- D. All BranchCache rules should be enabled in Windows Firewall.

Answer: B, C

Question: 5

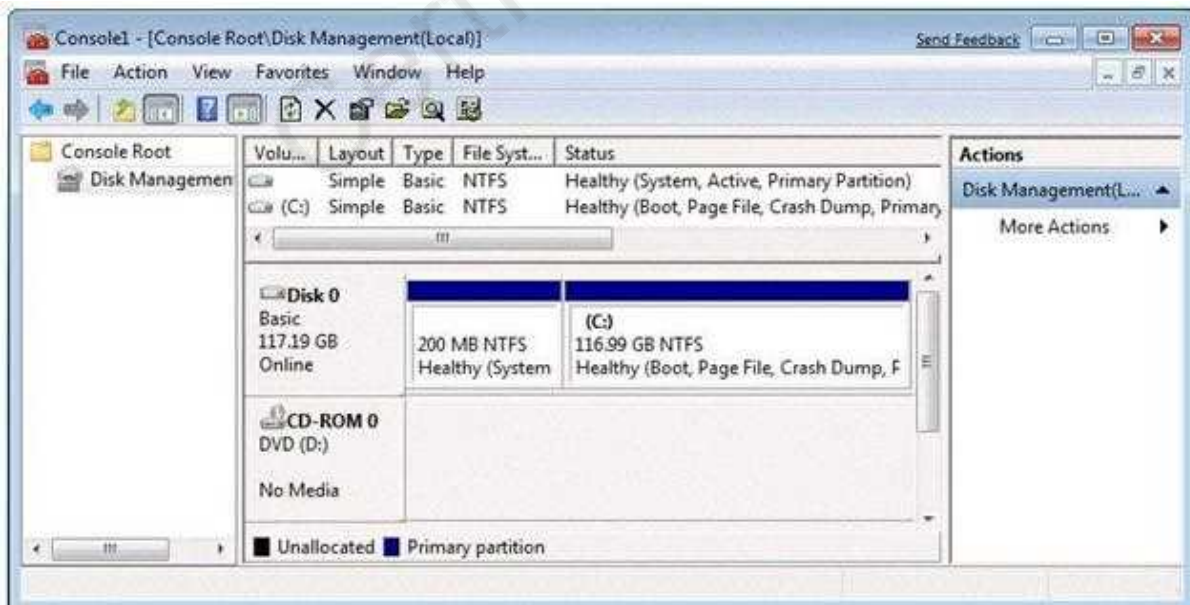
You work in an international company which is named Wiikigo. Before entering this company, you have two years of experience in the IT field, as well as experience implementing and administering any Windows client operating system in a networked environment. You are professional in installing, upgrading and migrating to Windows 7, deploying Windows 7, and configuring Hardware and Applications and son on. You manage a computer that runs Windows 7. You have to identify which applications were installed during the last week. So what action should you perform?

- A. The System Performance Data Collector Set should be run from Performance Monitor.
- B. The informational events should be reviewed from Reliability Monitor.
- C. The Software Environment should be reviewed from System Information.
- D. The System Diagnostics Report should be reviewed from Performance Monitor.

Answer: B

Question: 6

You have a computer that runs Windows 7. You open the Disk Management snap-in as shown in the exhibit. (Click the Exhibit button.)?



You need to ensure that you can create a new partition on Disk 0. What should you do?

- A. Shrink volume C
- B. Compress volume C
- C. Convert Disk 0 into a dynamic disk.
- D. Create and initialize a Virtual Hard Disk (VHD).

Answer: A

Explanation:

Needs to have sufficient space in order to create a new partition. Hence shrinking the C: partition will create additional space that can be used for a new partition.

Question: 7

Your network consists of one Active Directory domain. You have two computers named Computer1 and Computer2 that run Windows 7. Both computers are members of the domain.

From Computer1, you can recover all Encrypting File System (EFS) encrypted files for users in the domain.

You need to ensure that you can recover all EFS encrypted files from Computer2.

What should you do?

- A. On Computer1, back up %systemroot%\DigitalLocker. On Computer2, restore %systemroot%\DigitalLocker.
- B. On Computer1, export the data recovery agent certificate. On Computer2, import the data recovery agent certificate.
- C. On Computer1, run Secedit.exe and specify the /export parameter. On Computer2, run Secedit.exe and specify the /import parameter.
- D. On Computer1, run Cipher.exe and specify the /removeuser parameter. On Computer2, run Cipher.exe and specify the /adduser parameter.

Answer: B

Explanation:

You can import the recovery agent to another computer running Windows 7 if you want to recover files encrypted on the first computer. You can also recover files on another computer running Windows 7 if you have exported the EFS keys from the original computer and imported them on the new computer. You can use the Certificates console to import and export EFS keys.

NOT Secedit.exe:

You can use both the Local Group Policy Editor and the Local Security Policy console to import and export security-related Group Policy settings. You can use this import and export functionality to apply the same security settings to stand-alone computers that are not part of a domain environment. Exported security files are written in Security Template .inf format. As well as using Local Group Policy Editor and the Local Security Policy console to import policies that are stored in .inf format, you can apply them using the Secedit.exe command-line utility.

NOT Cipher.exe /removeuser /adduser.

NOT DigitalLocker.

Question: 8

You have a computer that runs Windows 7.

You need to configure the computer to meet the following requirements:

- Generate a new security ID (SID) when the computer starts.
- Ensure that the Welcome screen appears when the computer starts.

What should you do?

- A. Run Sysprep.exe /oobe /generalize.
- B. Run Sysprep.exe /audit /generalize.
- C. Run Msconfig.exe and select Selective startup.
- D. Run Msconfig.exe and select Diagnostic startup.

Answer: A

Explanation:

To prepare the reference computer for the user, you use the Sysprep utility with the /generalize option to remove hardware-specific information from the Windows installation and the /oobe option to configure the computer to boot to Windows Welcome upon the next restart. Open an elevated command prompt on the reference computer and run the following command: `c:\windows\system32\sysprep\sysprep.exe /oobe /generalize /shutdown` Sysprep prepares the image for capture by cleaning up various user-specific and computer-specific settings, as well as log files. The reference installation now is complete and ready to be imaged.

`/generalize`

Prepares the Windows installation to be imaged. If you specify this option, all unique system information is removed from the Windows installation. The SID is reset, system restore points are cleared, and event logs are deleted. The next time the computer starts, the specialize configuration pass runs. A new SID is created, and the clock for Windows activation resets (unless the clock has already been reset three times).

`/oobe`

Restarts the computer in Windows Welcome mode. Windows Welcome enables users to customize their Windows 7 operating system, create user accounts, and name the computer. Any settings in the `oobeSystem`

configuration pass in an answer file are processed immediately before Windows Welcome starts.

Question: 9

You have a computer that runs Windows 7.

You need to confirm that all device drivers installed on the computer are digitally signed.

What should you do?

- A. At a command prompt, run Verify.
- B. At a command prompt, run Sigverif.exe.
- C. From Device Manager, click Scan for hardware changes.
- D. From Device Manager, select the Devices by connection view.

Answer: B

Explanation:

Checking Digital Signatures with the File Signature Verification Tool

The DxDiag tool identifies problems with DirectX hardware and tells you whether that hardware has passed the WHQL testing regimen and has been signed digitally. However, it does not test the device drivers that are not associated with DirectX devices. To scan your computer and identify any unsigned drivers, you should use the File Signature Verification (Sigverif) tool.

Question: 10

You have a computer that runs Windows 7.

You need to modify the file extensions that are associated to Internet Explorer.

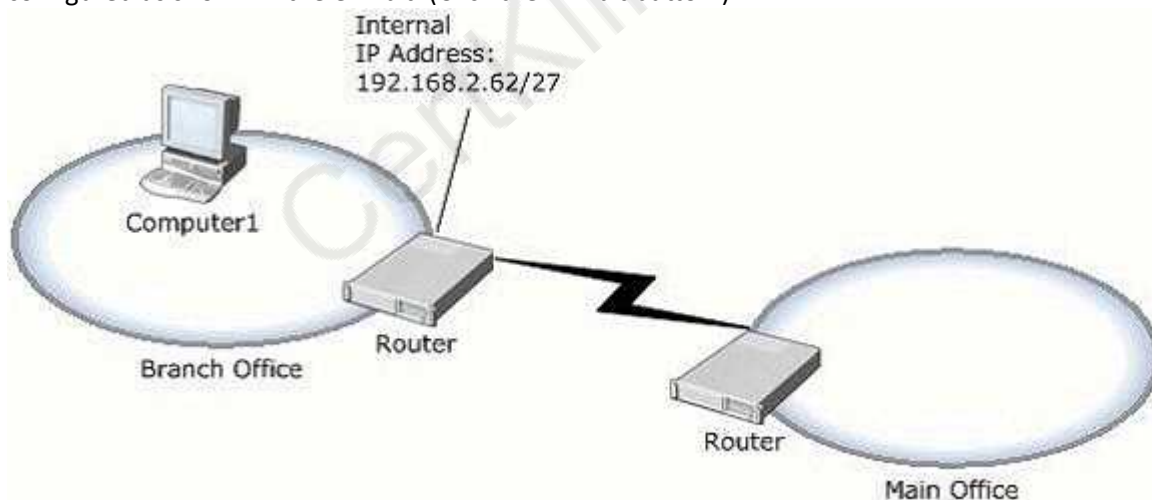
What should you do?

- A. From Internet Explorer, click Tools and then click Manage Add-ons.
- B. From Control Panel, open Default Programs and then click Set Associations.
- C. From the local Group Policy, expand Computer Configuration and then click Software Settings.
- D. From Window Explorer, right-click %programfiles%\Internet Explorer\iexplore.exe and then click Properties.

Answer: B

Question: 11

Your company has a main office and a branch office. The relevant portion of the network is configured as shown in the exhibit. (Click the Exhibit button.)



In the branch office, you deploy a new computer named Computer1 that runs Windows 7.

You need to assign an IP address to Computer1.

Which IP address should you use?

- A. 192.168.2.30
- B. 192.168.2.40
- C. 192.168.2.63
- D. 192.168.2.65

Answer: B

Explanation:

Internal IP Address of router is 192.168.2.62/27
 Leaves 5 bits for range = 32 addresses (including the 2 reserved addresses)
 Subnet Mask = 255.255.255.224

```
Address: 192.168.2.62      11000000.10101000.00000010.001 11110
Netmask: 255.255.255.224 = 27 11111111.11111111.11111111.111 00000
Wildcard: 0.0.0.31        00000000.00000000.00000000.000 11111
Network: 192.168.2.32/27  11000000.10101000.00000010.001 00000
```

```
Network Address      : 192.168.2.32 (reserved)
Address of First Host : 192.168.2.33
Address of Last Host  : 192.168.2.62
Broadcast Address     : 192.168.2.63 (reserved)
```

Acceptable IP range: 192.168.2.33 - 192.168.2.62

Therefore

192.168.2.30: is out of range (in the wrong subnet, not subnet 2).
 192.168.2.40: is acceptable (in correct subnet, and not reserved).
 192.168.2.63: is reserved for Broadcast (in subnet, but reserved).
 192.168.2.65: is out of range (in the wrong subnet, not subnet 2).

Acceptable IP ranges for those interested (excluding the 2 reserved IP addresses):

```
Segment 1: 192.168.2.1   - 192.168.2.30
Segment 2: 192.168.2.33 - 192.168.2.62
Segment 3: 192.168.2.65 - 192.168.2.94
Segment 4: 192.168.2.97 - 192.168.2.126
Segment 5: 192.168.2.129 - 192.168.2.158
Segment 6: 192.168.2.161 - 192.168.2.190
Segment 7: 192.168.2.193 - 192.168.2.222
Segment 8: 192.168.2.225 - 192.168.2.254
```

Segments for those interested (including the 2 reserved IP addresses):

```
Segment 1: 192.168.2.0   - 192.168.2.31
Segment 2: 192.168.2.32 - 192.168.2.63
Segment 3: 192.168.2.64 - 192.168.2.95
Segment 4: 192.168.2.96 - 192.168.2.127
Segment 5: 192.168.2.128 - 192.168.2.159
Segment 6: 192.168.2.160 - 192.168.2.191
Segment 7: 192.168.2.192 - 192.168.2.223
Segment 8: 192.168.2.224 - 192.168.2.255
```

Question: 12

You work in an international company which is named Wiikigo. Before entering this company, you have two years of experience in the IT field, as well as experience implementing and administering any Windows client operating system in a networked environment. You are professional in installing,

upgrading and migrating to Windows 7, deploying Windows 7, and configuring Hardware and Applications and son on. You are in charge of a computer that runs Windows Vista. You have Windows 7 installed on a new partition on the computer. You have to make sure that the computer always starts Windows Vista by default. So what action should you perform to make sure of this?

- A. In order to make sure that the computer always starts Windows Vista by default, a boot.ini file should be created in the root of the Windows 7 partition.
- B. In order to make sure that the computer always starts Windows Vista by default, a boot.ini file should be created in the root of the Windows Vista partition.
- C. In order to make sure that the computer always starts Windows Vista by default, Bcdedit.exe should be run and the /default parameter should be specified.
- D. In order to make sure that the computer always starts Windows Vista by default, Bcdedit.exe should be run and the /bootems parameter should be specified.

Answer: C

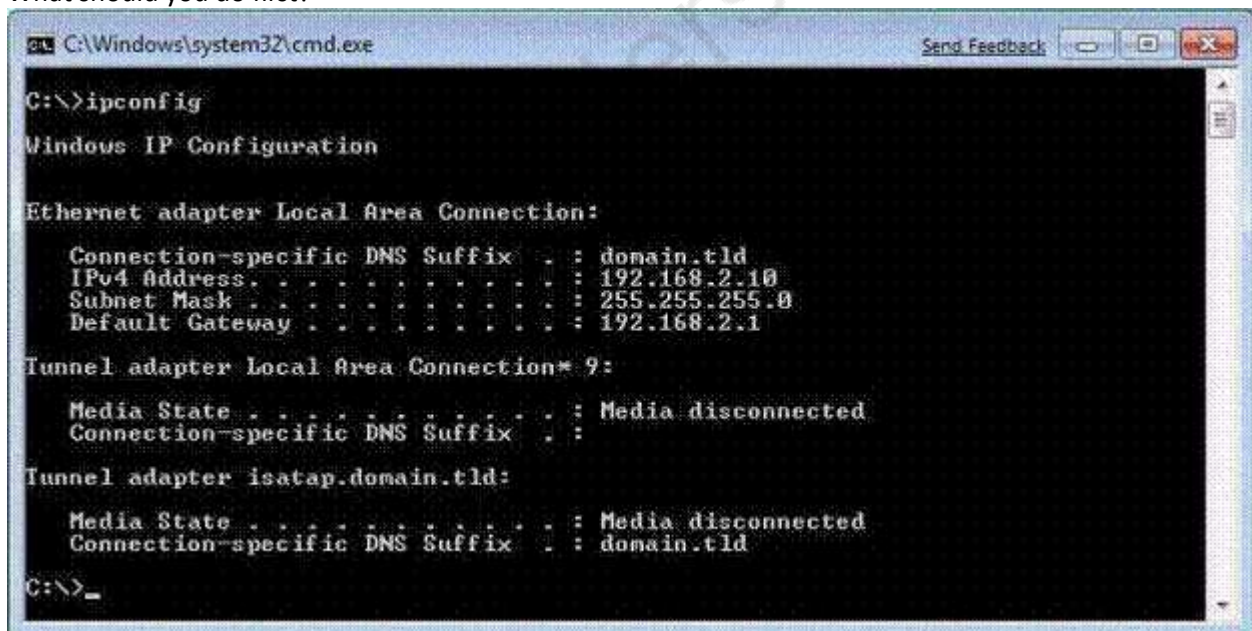
Question: 13

You have a computer that runs Windows 7.

You run Ipconfig as shown in the exhibit. (Click the Exhibit button.)

You need to ensure that you can establish a DirectAccess connection to the network.

What should you do first?



```
C:\Windows\system32\cmd.exe
C:\>ipconfig

Windows IP Configuration

Ethernet adapter Local Area Connection:

    Connection-specific DNS Suffix  . : domain.tld
    IPv4 Address. . . . .             : 192.168.2.10
    Subnet Mask . . . . .            : 255.255.255.0
    Default Gateway . . . . .        : 192.168.2.1

Tunnel adapter Local Area Connection* 9:

    Media State . . . . .            : Media disconnected
    Connection-specific DNS Suffix  . :

Tunnel adapter isatap.domain.tld:

    Media State . . . . .            : Media disconnected
    Connection-specific DNS Suffix  . : domain.tld

C:\>_
```

- A. Create a new VPN connection.
- B. Configure a static IPv4 address.
- C. Enable IPv6 on the network adapter.
- D. Add an additional default gateway address.

Answer: C

CertKillers.net

Thank You for trying 70-680 PDF Demo

To Buy Latest 70-680 Full Version Download visit link below

<https://www.certkillers.net/Exam/70-680>

Start Your 70-680 Preparation

[Limited Time Offer] Use Coupon “CKNET” for Further discount on your purchase. Test your 70-680 preparation with actual exam questions.

<https://www.certkillers.net>