



Microsoft

70-554-CSharp

*UPGRADE-MCSD MS.NET Skills to MCPD Entpse App Dvlpr
Pt2*

You need to use an appropriate component implementation approach to meet the requirements. What should you do?

- A. Use the .NET Framework ServiceController component.
- B. Use the .NET Framework Timer component.
- C. Use the .NET Framework BackgroundWorker component.
- D. Use the .NET Framework PerformanceCounter component.

Answer: C

QUESTION: 54

You are an enterprise application developer. You are creating an ASP.NET e-commerce Web site. Shoppers are able to browse products anonymously and page output caching is enabled. You are adding monitoring features to the Web site.

You must track the following information:

Products that are being browsed

Promotions that are being clicked on

Shoppers who want to sign out

Shoppers who have completed more than one purchase

The monitoring features are in the form of performance counters.

You need to ensure that the monitoring features meet the requirements. Which two actions should you perform? (Each correct answer presents part of the solution. Choose two.)

- A. Monitor products and promotions in the presentation tier.
- B. Monitor products and promotions in the middle tier.
- C. Monitor products and promotions in stored procedures.
- D. Monitor sign-outs and purchases in the presentation tier.
- E. Monitor sign-outs and purchases in the middle tier.
- F. Monitor sign-outs and purchases in stored procedures.

Answer: A, E

QUESTION: 55

You are an enterprise application developer. You create a client application. One thousand customer service agents use the application during their core business hours, from 8:00 to 17:00. The application conforms to the following design details:

The application uses separate business logic components and data access logic components.

The data components run on the client computer and connect to a central Microsoft SQL Server 2005 database server.

When the application starts, it retrieves datasets to populate list boxes, drop-down list boxes, and TreeView controls that have data common to all users.

Users are authenticated to the database by using Active Directory.

Users report that the application is slow to start. You need to recommend a solution so that the application starts normally. You want to achieve this goal with the minimum programming effort. Which solution should you recommend?

A. Change the data access component to use data readers instead of datasets. Redeploy the data access component.

B. Implement a Least Recently Used Cache (LRUCache) on the client application in the business component. Redeploy the business component.

C. Create a synchronization application to synchronize a local database with the central database. Modify the data access logic to connect to the local database if available, otherwise connect to the central database. Deploy Microsoft SQL Server 2005 Express Edition and the synchronization application. Redeploy the data access component.

D. Enable SQL connection pooling by giving the application a SQL username and password. Redeploy the configuration file.

E. Install the data access component on a Web server and access it through a Web service. Enable output caching on the Web service. Redeploy the business component.

Answer: E

QUESTION: 56

You are an enterprise application developer. You create a three-tier application for placing orders. The application permits users to submit search requests by using a Web service. The Web service occasionally times out when search requests are submitted. You conclude that the Web service times out due to high network bandwidth utilization. You plan to create custom counters if necessary. You need to use performance counters to analyze the data. Which three performance counters should you use? (Each correct answer presents part of the solution. Choose three.)

A. Network Interface: Bytes transferred/sec

B. Custom: Search result rows/sec

C. Microsoft SQL Server: Deadlocks/sec

D. Microsoft SQL Server: Batch requests/sec

E. Memory: Pages/sec

F. Custom: Search requests/sec

G. Custom: Number of orders placed/sec

Answer: A, B, F

QUESTION: 57

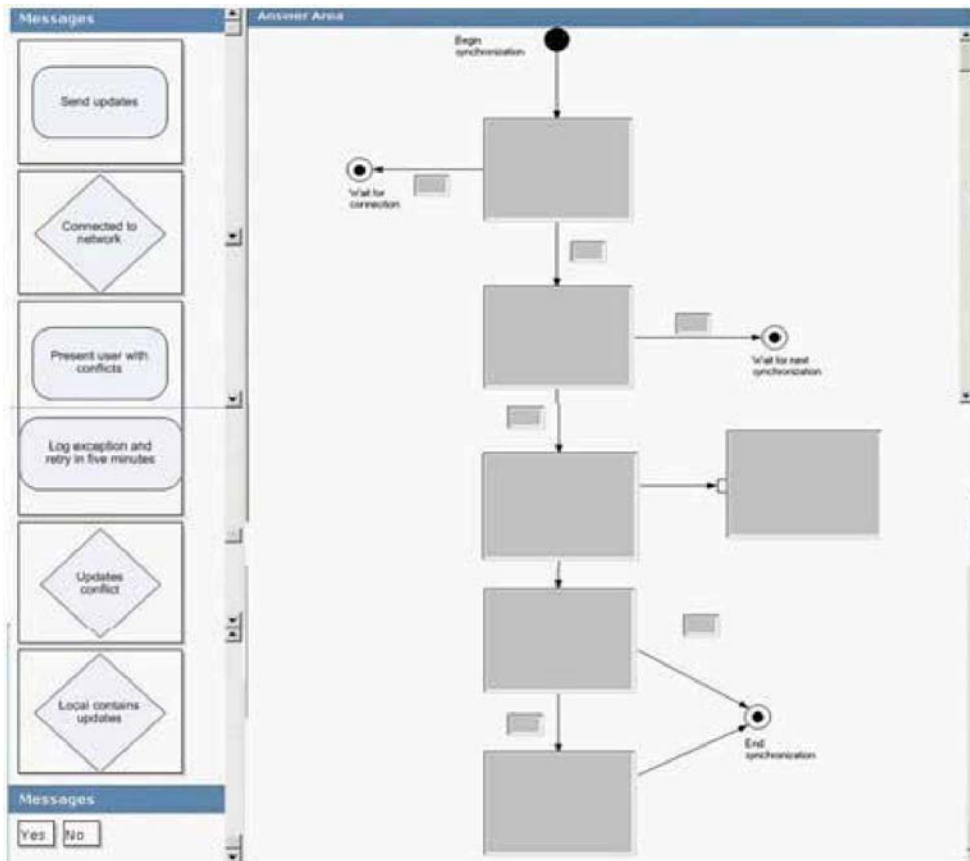
You are an enterprise application developer. You are supporting a smart client application that manages customer data. The customer data is built for offline use. Company representatives use the customer data. The application performs the following steps: The application detects when it is connected to the network. The application synchronizes data by using the server component. Sometimes, data or network issues cause exceptions. In such a situation, the application waits for five minutes before attempting to synchronize again. Representatives can verify a log file for details of what has occurred. The application performs the synchronization process in the following manner: The application finds out if there are remote or local changes to the data.

- o If there are remote changes, the application gets updates through Web services.
- o If there are local changes, the application issues updates by using message queues.
- o Local and remote synchronizations can happen at the same time.

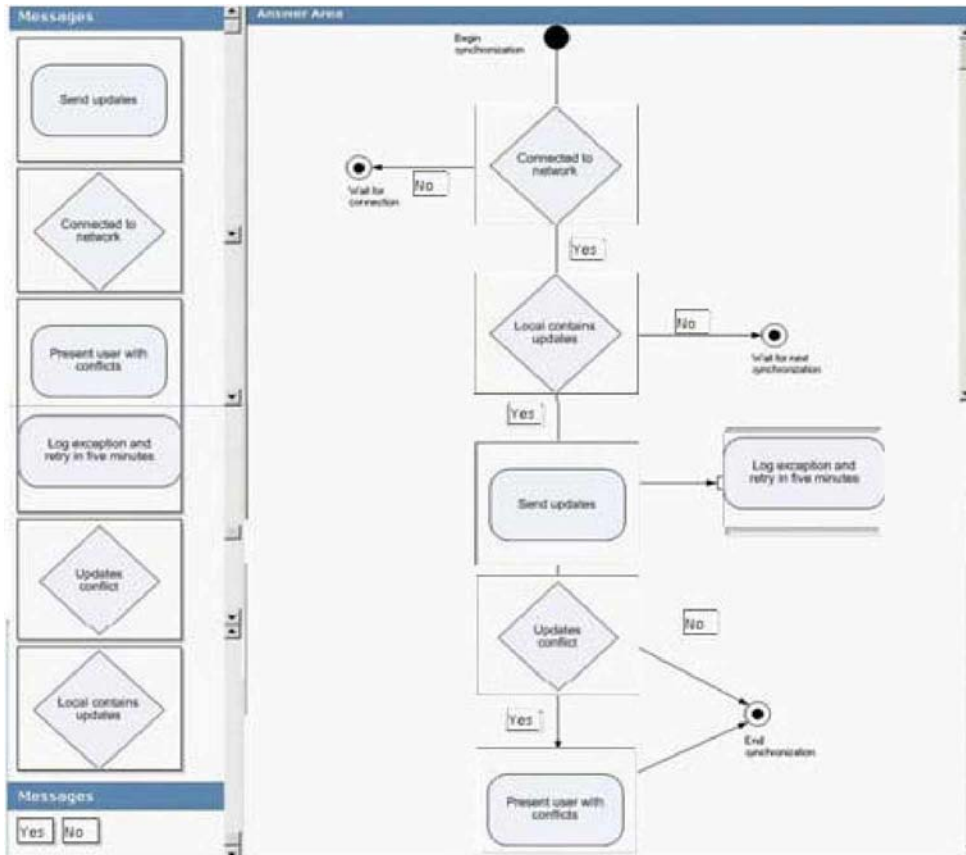
In case conflicts occur during data updates to the remote database, the application provides the representative an opportunity to verify what data has changed since the last synchronization.

- o The representative can leave the current data intact.
- o The representative can update the data by using their local copy.

You need to create an activity diagram to help you troubleshoot problems. How should you complete the activity diagram? To answer, drag the appropriate messages to the correct locations in the answer area.



Answer:



QUESTION: 58

You are an enterprise application developer. You create a layered application. You must deploy the application in a three-tier environment. Tier 1 consists of the presentation components deployed on a Web server. Tier 2 consists of the business objects deployed on an application server. Tier 3 consists of a database deployed on a database server. You create a set of classes in a separate assembly as a data access layer to encapsulate the database access functionality. None of the classes in the data access layer inherits from the MarshalByRefObject class. Your team plans to deploy the data access layer component in tier 3. You need to evaluate whether the deployment plan will meet the requirements. What should you conclude?

- A. The deployment plan meets the requirement.
- B. The deployment plan does not meet the requirement. You need to deploy the data access layer component in tier 2 and tier 3.
- C. The deployment plan does not meet the requirement. You need to deploy the data access layer component only in tier 2.

D. The deployment plan does not meet the requirement. You need to deploy the data access layer component in tier 1 and tier 2.

Answer: C

Download Full Version From <https://www.certkillers.net>



DON'T KNOW
OR NO PREFERENCE

Pass your exam at First Attempt....Guaranteed!