



# Microsoft

## 70-341 Exam

### Core Solutions of Microsoft Exchange Server 2013 Exam

Thank you for Downloading 70-341 exam PDF Demo

You can Buy Latest 70-341 Full Version Download

<https://www.certkillers.net/Exam/70-341>

<https://www.certkillers.net>

# Version: 23.1

## Case Study: 1

### Fabrikam, Inc

#### Overview

Fabrikam, Inc., is a pharmaceutical company located in Europe. The company has 5,000 users. The company is finalizing plans to deploy an Exchange Server 2013 organization.

The company has offices in Paris and Amsterdam.

#### Existing Environment

##### Active Directory Environment

The network contains an Active Directory domain named fabrikam.com. An Active Directory site exists for each office.

#### Network Infrastructure

The roles and location of each server are configured as shown in the following table.

Server name	Role	Location
DC1	Domain controller Global catalog server	Paris office
DC2	Domain controller	Paris office
DC3	Schema master Domain controller Global catalog server	Amsterdam office
FS1	File server	Paris office
FS2	File server	Paris office
FS3	File server	Amsterdam office
FS4	File server	Amsterdam office
TMG1	Microsoft Forefront Threat Management Gateway (TMG) 2010	Perimeter network in the Paris office

Client computers run either Windows 7 or Windows 8 and have Microsoft Office 2010 installed.

The Paris office uses the 192.168.1.0/24 IP range. The Amsterdam office uses the 192.168.2.0/24 IP range.

The offices connect to each other by using a high-speed, low-latency WAN link. Each office has a 10-Mbps connection to the Internet.

### Planned Exchange Infrastructure

The company plans to deploy five servers that run Exchange Server. The servers will be configured as shown in the following table.

Server name	Server role	Location
EX1	<ul style="list-style-type: none"> <li>Exchange Server 2013 Mailbox server</li> <li>Exchange Server 2013 Client Access server</li> </ul>	Paris office
EX2	<ul style="list-style-type: none"> <li>Exchange Server 2013 Mailbox server</li> <li>Exchange Server 2013 Client Access server</li> </ul>	Paris office
EX3	<ul style="list-style-type: none"> <li>Exchange Server 2013 Mailbox server</li> <li>Exchange Server 2013 Client Access server</li> </ul>	Amsterdam office
EX4	<ul style="list-style-type: none"> <li>Exchange Server 2013 Mailbox server</li> <li>Exchange Server 2013 Client Access server</li> </ul>	Amsterdam office
EDGE1	Exchange Server 2010 Edge Transport server	Perimeter network in the Paris office

The company plans to have mailbox databases replicated in database availability groups (DAGs). The mailbox databases and DAGs will be configured as shown in the following table.

DAG name	Database name	DAG member
DAG1	OperationsDB FinanceDB SalesDB	EX1, EX3
DAG2	MarketingDB ResearchDB LabDB	EX2, EX4

DAG1 will use FS1 as a file share witness. DAG2 will use FS3 as a file share witness.

You plan to create the following networks on each DAG:

- A dedicated replication network named DAGNET1
- A MAPI network named DAGNET2

All replication traffic will run on DAGNET1. All client connections will run on DAGNET2. Client connections must never occur on DAGNET1. Replication traffic must only occur on DAGNET2 if DAGNET1 is unavailable.

Each Exchange Server 2013 Mailbox server will be configured to have two network adapters.

The following two mailbox databases will not be replicated as part of the DAGs:

- A mailbox database named AccountingDB that is hosted on EX1
- A mailbox database named TempStaffDB that is hosted on EX4

EDGE1 will have an Edge Subscription configured, with both EX1 and EX2 as targets.

### Requirements

#### Planned Changes

An external consultant reviews the Exchange Server 2013 deployment plan and identifies the following areas of concern:

- The DAGs will not be monitored.
- Multiple Edge Transport servers are required to prevent the potential for a single point of failure.

#### Technical Requirements

Fabrikam must meet the following technical requirements:

- Email must be evaluated for SPAM before the email enters the internal network.

- Production system patching must minimize downtime to achieve the highest possible service to users.
- Users must be able to use the Exchange Control Panel to autonomously join and disjoin their department's distribution lists.
- Users must be able to access all Internet-facing Exchange Server services by using the names of mail.fabrikam.com and autodiscover.fabrikam.com.

The company establishes a partnership with another company named A. Datum Corporation. A. Datum uses the SMTP suffix adatum.com for all email addresses. Fabrikam plans to exchange sensitive information with A. Datum and requires that the email messages sent between the two companies be encrypted. The solution must use Domain Security.

Users in the research and development (R&D) department must be able to view only the mailboxes of the users in their department from Microsoft Outlook. The users in all of the other departments must be prevented from viewing the mailboxes of the R&D users from Outlook.

Administrators plan to produce HTML reports that contain information about recent status changes to the mailbox databases.

Fabrikam is evaluating whether to abort its plan to implement an Exchange Server 2010 Edge Transport server and to implement a Client Access server in the Paris office instead. The Client Access server will have anti-spam agents installed.

---

## Question: 1

---

### HOTSPOT

You need to recommend which configurations must be set for each network.

Which configurations should you recommend?

To answer, select the appropriate configurations for each network in the answer area.

Network Name	ReplicationEnabled	MapiAccessEnabled
DAGNET1	<input type="checkbox"/>	<input type="checkbox"/>
DAGNET2	<input type="checkbox"/>	<input type="checkbox"/>

---

**Answer:**

---

Network Name	ReplicationEnabled	MapiAccessEnabled
DAGNET1	<input checked="" type="checkbox"/>	<input type="checkbox"/>
DAGNET2	<input type="checkbox"/>	<input checked="" type="checkbox"/>

---

**Question: 2**

---

An administrator recommends removing EDGE1 from the implementation plan and adding a new Client Access server named CAS-8 instead.

You need to identify which anti-spam feature will NOT be available on CAS-8.

Which anti-spam feature should you identify?

- A. Connection Filtering
- B. Sender Filtering
- C. Content Filtering
- D. Recipient Filtering

---

**Answer: A**

---

---

**Question: 3**

---

You need to recommend which task is required to prepare Active Directory for the planned Exchange Server 2013 implementation.

What should you recommend?

- A. On any domain controller in the Paris office, run setup.exe /preparead.
- B. On any domain controller in the Amsterdam office, run setup.exe /preparead.
- C. On any domain controller in the Paris office, run setup.exe /preparealldomains.
- D. On any domain controller in the Amsterdam office, run setup.exe /preparedomain.

---

**Answer: B**

---

---

**Question: 4**

---

You need to recommend a design that meets the technical requirements for communication between Fabrikam and

A. Datum.

Which three actions should you perform in fabrikam.com? (Each correct answer presents part of the solution. Choose three.)

- A. Create a remote domain for adatum.com.
- B. Exchange certificates with the administrators of adatum.com.
- C. From EDGE1, create a Send connector that has an address space for adatum.com
- D. Run the Set-TransportConfigcmdlet.
- E. Run the Set-TransportServercmdlet.
- F. From a Mailbox server, create a Send connector that has an address space for adatum.com.

---

**Answer: B, D, F**

---

---

**Question: 5**

---

**DRAG DROP**



You are evaluating the implementation of a second Edge Transport server named EDGE2 in the Amsterdam office.

You need to recommend which tasks must be performed to ensure that email messages can be sent by the organization if a single Edge Transport server fails.

Which three actions should you include in the recommendation?

To answer, move the three appropriate actions from the list of actions to the answer area and arrange them in the correct order.

The screenshot shows a drag-and-drop interface with two main sections: 'Actions' on the left and 'Answer Area' on the right. The 'Actions' section contains seven yellow boxes with the following text:

- From EDGE2, run the **exportedgeconfig.ps1** script.
- Update the Send connectors on both Edge Transport servers.
- From EDGE1, run the **exportedgeconfig.ps1** script.
- Create a new Edge Subscription to EDGE2.
- From EDGE2, run the **importedgeconfig.ps1** script.
- Create a new Edge Subscription to EDGE1.
- From EDGE1, run the **importedgeconfig.ps1** script.

The 'Answer Area' is currently empty. A large, semi-transparent watermark 'Certkillers.net' is visible across the center of the interface.

---

**Answer:**

---

From EDGE1, run the exportedgeconfig.ps1 script.

From EDGE2, run the importedgeconfig.ps1 script.

Create a new Edge Subscription to EDGE2.

---

**Question: 6**

---

You need to recommend which type of group must be used to create the planned department lists.

Which type of group should you recommend?

- A. Universal Distribution
- B. Dynamic Distribution
- C. Global Security
- D. Universal Security

---

**Answer: A**

---

---

**Question: 7**

---

You need to recommend which tasks must be performed to meet the technical requirements of the research and development (R&D) department.

Which two tasks should you recommend? (Each correct answer presents part of the solution. Choose two.)

- A. Create a new global address list (GAL) and a new address book policy.
- B. Modify the permissions of the default global address list (GAL), and then create a new GAL.
- C. Run the Update AddressList cmdlet.
- D. Run the Set-Mailbox cmdlet.
- E. Create an OAB virtual directory.

---

**Answer: A, D**

---

---

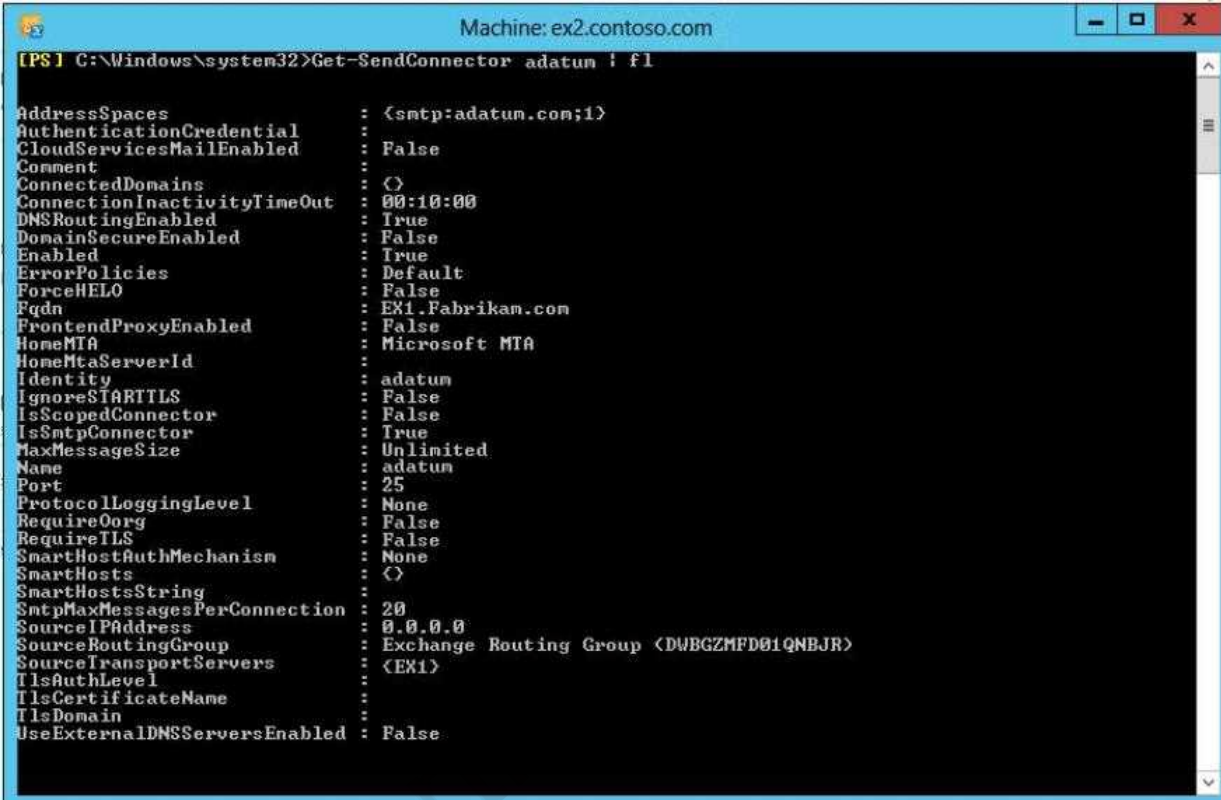
**Question: 8**

---

You are testing the planned implementation of Domain Security.

You discover that users fail to exchange domain-secured email messages.

You open the Exchange Management Shell and discover the output shown in the exhibit. (Click the Exhibit button.)



```
Machine: ex2.contoso.com
[PS] C:\Windows\system32>Get-SendConnector adatum | fl
AddressSpaces           : <smtplib:adatum.com;1>
AuthenticationCredential :
CloudServicesMailEnabled : False
Comment                 :
ConnectedDomains        : ()
ConnectionInactivityTimeout : 00:10:00
DNSRoutingEnabled       : True
DomainSecureEnabled     : False
Enabled                 : True
ErrorPolicies           : Default
ForceHELO               : False
Fqdn                   : EX1.Fabrikam.com
FrontendProxyEnabled    : False
HomeMTA                 : Microsoft MTA
HomeMtaServerId        :
Identity               : adatum
IgnoreSTARTTLS         : False
IsScopedConnector       : False
IsSmtplibConnector     : True
MaxMessageSize         : Unlimited
Name                   : adatum
Port                   : 25
ProtocolLoggingLevel    : None
RequireOrg              : False
RequireTLS              : False
SmarthostAuthMechanism : None
Smarthosts             : ()
SmarthostsString       :
SmtplibMaxMessagesPerConnection : 20
SourceIPAddress         : 0.0.0.0
SourceRoutingGroup     : Exchange Routing Group (DUBGZMFD01QNEJR)
SourceTransportServers  : <EX1>
TlsAuthLevel           :
TlsCertificateName     :
TlsDomain              :
UseExternalDNSServersEnabled : False
```

You need to ensure that users can exchange email messages by using Domain Security.

Which two parameters should you modify by using the Set-SendConnector cmdlet? (Each correct answer presents part of the solution. Choose two.)

- A. tlsauthlevel
- B. requiretls
- C. ignorestarttls
- D. tlsdomain
- E. domainsecureenabled
- F. smarthostauthmechanism

---

**Answer: B, E**

---

---

**Question: 9**

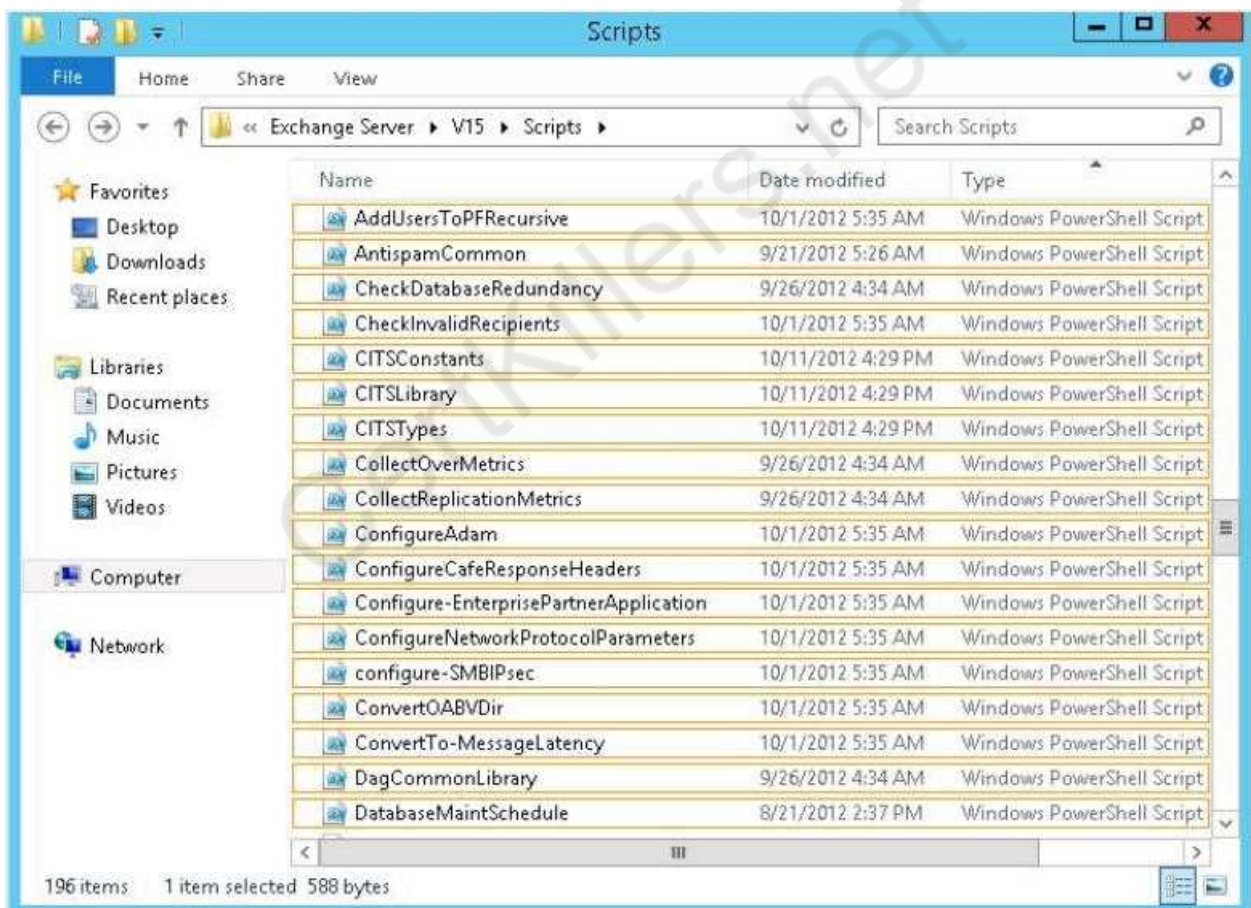
---

**HOTSPOT**

You need to recommend which script the administrators must run to create the reports required to meet the technical requirements.

Which script should you recommend?

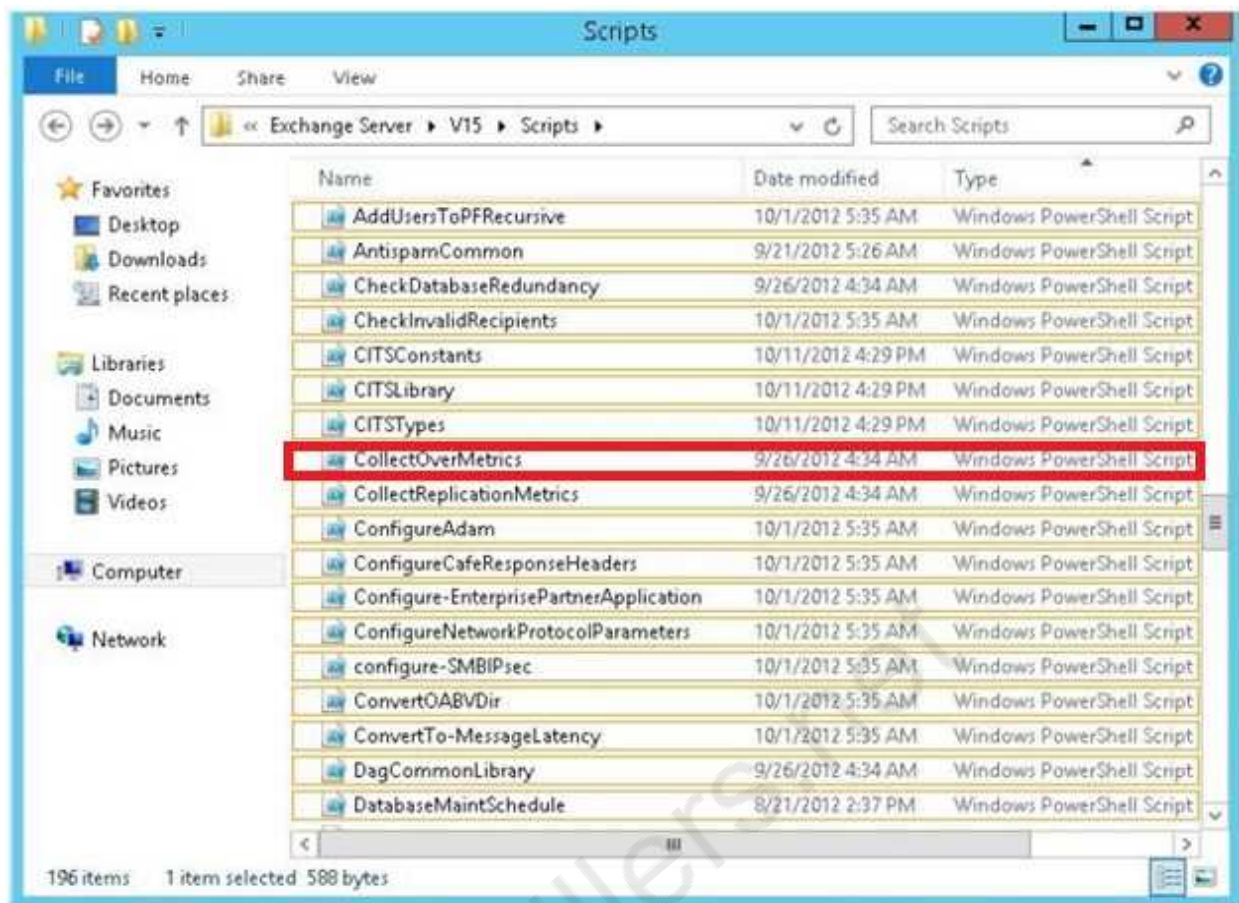
To answer, select the appropriate script in the answer area.



---

**Answer:**

---



## Question: 10

You need to recommend which recovery solution will restore access to all of the mailboxes in AccountingDB if EX1 fails. The solution must restore access to email messages as quickly as possible.

Which recovery solution should you recommend?

- A. On EX2, create a new mailbox database. Restore the database files, and then mount the database. Run the New-MailboxRestoreRequest cmdlet for all of the mailboxes in the database.
- B. On EX2, create a new mailbox database. Restore the database files, and then mount the database. Run the Set-Mailbox cmdlet for all of the mailboxes in the database.
- C. On replacement hardware, run setup /mode:recoverserver. Restore the database files, and then mount the database. Run the Set-Mailbox cmdlet.
- D. On replacement hardware, run setup /mode:recoverserver. Restore the database files, and then mount the database. Run the New-MailboxRestoreRequest cmdlet for all of the mailboxes in the database.

---

**Answer: A**

---

---

**Question: 11**

---

**DRAG DROP**

You need to recommend to a solution to deploy the Outlook app.

Which three actions should you recommend performing in sequence?

Answer Area

Run the **\$Data=Get-Content -Path "C:\Apps\SocialMediaApp.xml" -Encoding Byte -ReadCount 0** command.

Run the **New-App -FileData \$Data** command.

Run the **Set-App** cmdlet.

Run the **Get-App** cmdlet.

Install the Outlook app.

---

**Answer:**

---

Install the Outlook app.

Run the Get-App cmdlet.

Run the Set-App cmdlet.

**Case Study: 2****Contoso Ltd**  
**Overview****General Overview**

Contoso, Ltd., is a scientific research and supply company that has offices along the east coast of North America

a. The company recently completed an upgrade to Exchange Server 2013.

### **Physical Locations**

The company has three sales offices and a research office. The sales offices are located in Atlanta, New York, and Montreal. The research office is located in Miami.

### **Existing Environment**

#### **Active Directory Environment**

The network contains one Active Directory forest named contoso.com. The Miami office has its own domain named research.contoso.com.

Each office is configured as an Active Directory site. Each site contains two domain controllers that run Windows Server 2008 R2 x64. All of the FSMO roles for contoso.com are owned by a domain controller in the New York site. All of the FSMO roles for the research.contoso.com domain are owned by a domain controller in the Miami site.

One domain controller in each site is configured as a global catalog server. All of the domain controllers are configured as DNS servers.

The functional level of the forest and domains is Windows Server 2008 R2.

#### **Network Infrastructure**

All client computers are configured to connect to the DNS servers in their respective office only.

Contoso.com has a standalone certification authority (CA) on a server that runs Windows Server 2008 R2.

All offices connect to the New York office by using a high-speed WAN link.

#### **Email Infrastructure**

The Exchange Server 2013 organization contains four servers in the New York office. The servers are configured as shown in the following table.

Server name	Server role	Data availability group (DAG) name
NY-EX1	Mailbox server Client Access server	NY-DAG
NY-EX2	Mailbox server Client Access server	NY-DAG
NY-EX3	Mailbox server Client Access server	NY-DAG
NY-EX4	Mailbox server Client Access server	NY-DAG

All external access for the contoso.com organization is provided through an Internet link at the New York office. Load balancing is provided by using DNS round robin. All inbound and outbound email for the domain is routed through a mail appliance in the New York office.

The Exchange Server 2013 organization contains four servers in the Atlanta office. The servers are configured as shown in the following table.

Server name	Server role	Data availability group (DAG) name
ATL-EX1	Mailbox server Client Access server	NY-DAG
ATL-EX2	Mailbox server Client Access server	NY-DAG
ATL-EX3	Mailbox server Client Access server	NY-DAG
ATL-EX4	Mailbox server Client Access server	NY-DAG

The file share witness for NY-DAG is on a file server in the Atlanta office.

The Exchange Server 2013 organization contains two servers in the Montreal office and two servers in the Miami office. The servers are configured as shown the following table.

Server name	Server role	Office
MIA-EX1	Mailbox server Client Access server	Miami
MIA-EX2	Mailbox server Client Access server	Miami
MTL-EX3	Mailbox server Client Access server	Montreal
MTL-EX4	Mailbox server Client Access server	Montreal

All external access to the organization of the research.contoso.com domain is provided through the



Internet link at the Miami office. Load balancing is provided by using DNS round robin. All inbound and outbound email for the domain goes through an email appliance in the Miami office.

All Exchange Server 2013 servers run Windows Server 2012 Standard.

All users have Windows Phone devices that connect to the Exchange organization by using Exchange ActiveSync.

### **User Issues**

You discover the following user issues:

- Some users report that, intermittently, they fail to connect to their email from their Windows Phone device.
- Some users from the New York office report that some searches from Outlook Web App return incomplete results.
- Some of the users in each office report that they fail to access their mailbox during the maintenance period of the Active Directory domain controllers.

You verify that all of the remote users can connect to the network successfully by using a VPN connection, and can then launch Outlook successfully.

### **Partnerships**

Contoso recently entered into a partnership with a company named A. Datum Corporation. A. Datum has a main office and four branch offices. The main office is located in Toronto.

A. Datum has a messaging infrastructure configured as shown in the following table.

Server name	Server role	Exchange Server version	Office
Server1	Mailbox server Client Access server Hub Transport server	Exchange Server 2010	Branch office
Server2	Mailbox server Client Access server Hub Transport server	Exchange Server 2010	Branch office
Server3	Mailbox server Client Access server Hub Transport server	Exchange Server 2010	Branch office
Server4	Mailbox server Client Access server Hub Transport server	Exchange Server 2010	Branch office
Server5	Mailbox server Client Access server Hub Transport server	Exchange Server 2010	Main office
Server6	Mailbox server Client Access server Hub Transport server	Exchange Server 2010	Main office

### Requirements

#### Planned Changes

Contoso plans to deploy a hardware load balancer in the New York office. The load balancer must bridge all SSL connections to the Exchange servers.

You plan to deploy two new Exchange Server 2013 servers in a virtual server environment in the Miami office. The servers will host a few mailboxes as part of an evaluation of resource utilization for virtualized Exchange servers.

You also plan to deploy a high availability solution for Mailbox servers in the

You plan to replace the email appliance in New York because of recent power outages.

#### Business Requirements

Contoso identifies the following business requirements:

- Minimize the hardware costs required for a load balancing solution.
- Minimize the software costs required for a load balancing solution.
- Minimize user interruptions if a service fails on a Mailbox server.
- Minimize user interruptions if a service fails on a Client Access server.

---

**Question: 12**

---

You need to identify which business requirement will be met by implementing the planned hardware load balancer.

Which business requirement should you identify?

- A. Minimize the hardware costs required for a load balancing solution.
- B. Minimize the software costs required for a load balancing solution.
- C. Minimize user interruptions if a service fails on a Client Access server.
- D. Minimize user interruptions if a service fails on a Mailbox server.

---

**Answer: C**

---

---

**Question: 13**

---

You need to resolve the search issue reported by the users in the New York office.

You restart the Microsoft Exchange Search service and discover that the active copy of the mailbox database has a content indexing status of Unknown.

What should you do next?

- A. Rebuild the content index.
- B. Run the Update-MailboxDatabaseCopy cmdlet and specify the -manualresume parameter.
- C. Restart the Microsoft Exchange Mailbox Replication service.
- D. Run the Update-MailboxDatabaseCopy cmdlet and specify the -catalogonly parameter.

---

**Answer: D**

---

---

**Question: 14**

---

You need to ensure that all of the email messages sent from the Internet to adatum.com are routed through the contoso.com organization.

What should you create in contoso.com? (Each correct answer presents part of the solution. Choose all that apply.)

- A. A contact object for each adatum.com recipient
- B. An internal relay accepted domain for adatum.com
- C. A Send connector that is configured to point to the contoso.com transport servers
- D. A Send connector that is configured to point to the adatum.com transport servers
- E. An authoritative accepted domain for adatum.com

---

**Answer: B, D**

---

---

### **Question: 15**

---

You need to prevent several users in the Miami office from establishing more than two concurrent Exchange ActiveSync connections to the Exchange Server organization. The solution must affect only the users in the Miami office.

Which two actions should you perform? (Each correct answer presents part of the solution. Choose two.)

- A. Create a new throttling policy that has the Organization scope.
- B. Create a new throttling policy that has the Global scope.
- C. Create a new throttling policy that has the Regular scope.
- D. Run the Set-ThrottlingPolicyAssociation cmdlet.
- E. Run the Set-ThrottlingPolicy cmdlet.
- F. Remove the default throttling policy.

---

**Answer: C, D**

---

---

**Question: 16**

---

You need to recommend a temporary solution to reroute all of the outbound email messages through the Miami mail appliance during the planned replacement of the New York mail appliance.

What are three possible ways to achieve the goal? (Each correct answer presents a complete solution. Choose three.)

- A. Modify the value of the SmartHost of the Send connector in the New York office.
- B. Increase the cost of the Send connector in the Miami office.
- C. Increase the cost of the Send connector in the New York office.
- D. Decrease the cost of the Send connector in the New York office,
- E. Modify the value of the SmartHost of the Send connector in the Miami office.
- F. Disable the Send connector in the New York office.

---

**Answer: A, C, F**

---

## Thank You for trying 70-341 PDF Demo

To Buy Latest 70-341 Full Version Download visit link below

<https://www.certkillers.net/Exam/70-341>

## Start Your 70-341 Preparation

**[Limited Time Offer]** Use Coupon “CKNET” for Further discount on your purchase. Test your 70-341 preparation with actual exam questions.

<https://www.certkillers.net>