



**Cisco**

**642-467**

*Integrating Cisco Unified Communications(R) Applications  
v8.0 (CAPPS v8.0)*

**QUESTION: 96**

Which tool is used to verify that Cisco Unified Presence intercluster peers are valid and can be reached?

- A. Cisco Unified Presence Diagnostics
- B. Cisco Unified Real Time Monitoring Tool
- C. Cisco Unified Tracing Tool
- D. Cisco Unified Presence System Troubleshooter
- E. ping

**Answer: D**

**QUESTION: 97**

Which two of the following are considered administrative and database services on a Cisco Unified Presence server? (Choose two.)

- A. Cisco Serviceability Reporter
- B. Cisco Bulk Provisioning Service
- C. Cisco Database Layer Monitor Service
- D. Cisco UP Sync Agent
- E. Cisco AXL Web Service
- F. Cisco Unified Presence XCP

**Answer: B, E**

**QUESTION: 98**

Which two statements are true about VPIM? (Choose two.)

- A. VPIM is an industry standard.
- B. VPIM is a Cisco standard.
- C. VPIM is based on the Simple Mail Transfer Protocol.
- D. VPIM is based on the Simple Network Management Protocol.

**Answer: A, C**

**QUESTION: 99**

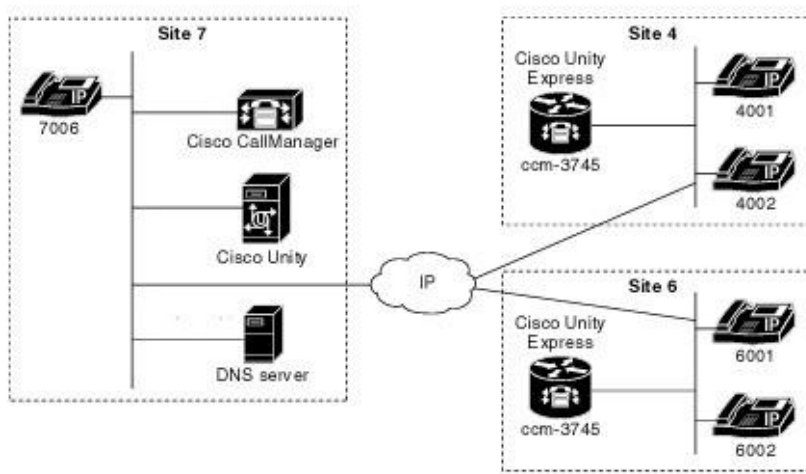
Which tool is used to migrate users from Cisco Unity to Cisco Unity Connection?

- A. CSV import
- B. LDAP import
- C. Exchange Synch import
- D. COBRAS import
- E. Cisco Unity Migration Assistant

**Answer:** D

**QUESTION:** 100

Refer to the exhibit.



Which of the following statements is true about the remote users that are configured in the exhibit?

- A. Remote users must always be added when configuring VPIM on Cisco Unity Express.
- B. Remote user configuration is optional for VPIM. It is only necessary if VPIM networking is implemented between a Cisco Unity Connection and Cisco Unity Express systems.
- C. Remote users are needed if the dial-by-name feature is required.
- D. Remote users are needed if VPIM implementation is required between Cisco Unity Express and a third-party voice-mail system that supports VPIM.

**Answer:** C

**QUESTION:** 101

In Cisco Unity Connection, to which three objects can a partition be assigned? (Choose three.)

- A. Users
- B. Distribution Lists
- C. Route Patterns
- D. Directory Numbers
- E. VPIM Location
- F. Hunt Pilot
- G. Translation Pattern

**Answer:** A, B, E

**QUESTION:** 102

As a Cisco Unity administrator, you have set the default Automatic Gain Control value to - 26 dB. Which value will you set Automatic Gain Control to when you want to increase the average volume?

- A. -10 dB
- B. -30 dB
- C. -40 dB
- D. -50 dB
- E. -60 dB

**Answer:** A

**QUESTION:** 103

Refer to the exhibit.

```

19:03:12.009 |mapi_call 9
19:03:12.009 |Calling cb NOT handled.
19:03:24.121 |Got Buffer (388) <route from='cm-1_jsmcp-1_xmppd-1@cm-1_jsmcp-1.cup-1/B4216880F' to='mblack@jms-1.cup-1/A2D11298'><presence from='mblack@cisco.com/cucsf87397' id='Ejbs2-129' to='mblack@cisco.com/composed'><show>dnd</show><presence entity='sip:mblack@cisco.com' xmlns='urn:ietf:params:xml:ns:pidf'><person id='mblack'><activities><dnd/></activities><class>>manual</class></person></presence></presence></route>
19:03:24.121 |DELIVER: type:8, host:jsm-1.cup-1, packet:<route from='cm-1_jsmcp-1_xmppd-1@cm-1_jsmcp-1.cup-1/B4216880F' to='mblack@jms-1.cup-1/A2D11298'><presence from='mblack@cisco.com/cucsf87397' id='Ejbs2-129' to='mblack@cisco.com/composed'><show>dnd</show><presence entity='sip:mblack@cisco.com' xmlns='urn:ietf:params:xml:ns:pidf'><person id='mblack'><activities><dnd/></activities><class>>manual</class></person></presence></presence></route>

```

Which Cisco Unified Personal Communicator status has the user selected?

- A. Available
- B. Do Not Disturb
- C. Away
- D. In a Meeting
- E. Out of Office

**Answer:** B

Download Full Version From <https://www.certkillers.net>



*Pass your exam at First Attempt....Guaranteed!*