



**Cisco**

**642-437**

*Implementing Cisco Unified Communications Voice over IP and QoS v8.0 (CVOICE v8.0)*

**QUESTION: 232**

Which command should you use to configure a dial-peer to support T.38 fax relay and to use Cisco fax relay if T.38 fails?

- A. fax protocol t38 fallback cisco
- B. fax t38 fallback cisco
- C. fax relay t38 cisco
- D. fax relay t38 backup cisco relay

**Answer: A**

**QUESTION: 233**

Calls are failing to reach the E1 PRI circuit on the PSTN gateway. Which command would be useful in determining if the dial peers are configured properly?

- A. debug voice dial-peer
- B. debug isdn q921
- C. ccapi inout
- D. show controller e1 0/0/0
- E. debug voice circuit

**Answer: A**

**QUESTION: 234**

Which scenario requires QoS to be deployed on a network?

- A. consistent bandwidth
- B. an end-to-end audit
- C. slow performance
- D. an echo

**Answer: B**

**QUESTION: 235**

Which command should you use when checking for phone registration status or verifying button assignments?

- A. show IP phone
- B. show ephone-dn 9
- C. show ephone

D. show telephony-service

**Answer:** C

**QUESTION:** 236

Which three IOS commands are used by Cisco Unified Communications Manager Express for digit manipulations? (Choose three.)

- A. prefix digits
- B. session target
- C. forward-digit numbers
- D. num-exp match
- E. no dtmf-relay
- F. target session

**Answer:** A, C, D

**QUESTION:** 237

Which process does a voice gateway use to determine how to route an outbound call?

- A. The voice gateway uses the called number to match the destination pattern of outbound dial peers using the first-match rule.
- B. The voice gateway uses the calling number to match the destination pattern of the outbound dial peers using the longest-match rule.
- C. The voice gateway uses the first-match rule to match the calling number to the destination pattern of the outbound POTS and VoIP dial peers.
- D. The voice gateway uses the longest-match rule to match the called number to the destination pattern to the outbound POTS or VoIP dial peers.

**Answer:** D

**QUESTION:** 238

Digital signal processors offload media processing functions from voice processing equipment. What is the function of the dsp services dspfarm command that is issued under the voice-card configuration mode?

- A. Provides resources for Flex-DSPRM status UP.
- B. Permits the codec rate to be attempted for SCCP-controlled connections.
- C. Takes the DSP resources that are not being used for the voice part and assigns them to a farm.
- D. Enables profile failed due to insufficient transcoding resources.

**Answer:** C

**QUESTION:** 239

Which four are benefits of VLANs in an organization? (Choose four.)

- A. increased performance
- B. improved manageability
- C. better VLAN database
- D. quick response to ping times
- E. physical topology independence
- F. better LAN infrastructure
- G. switch is able to reboot faster
- H. increased security

**Answer:** A, B, E, H

**QUESTION:** 240

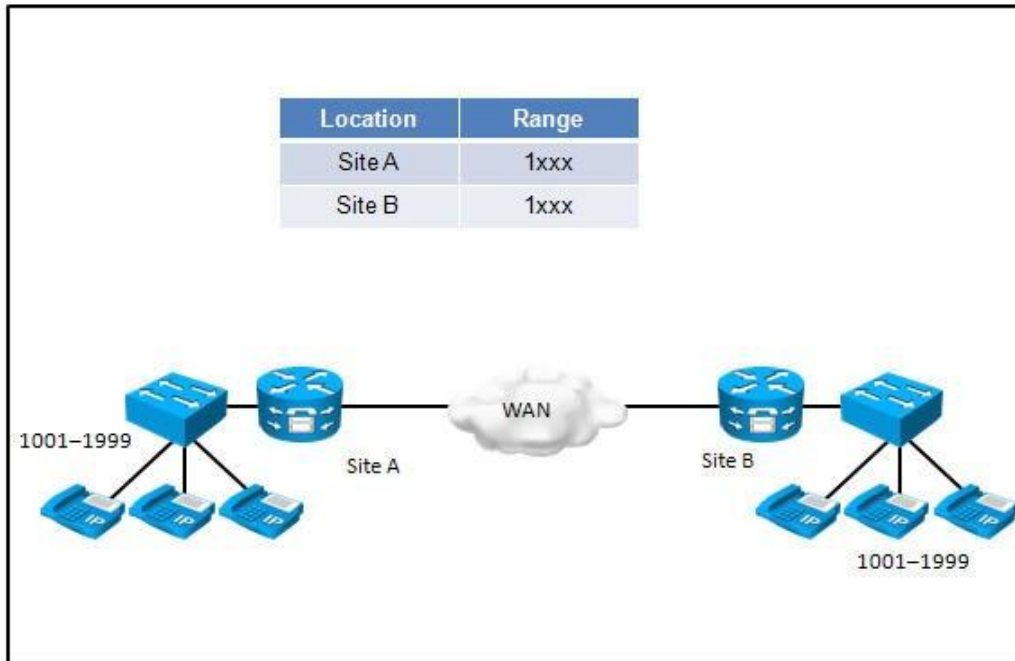
How does DiffServ deliver QoS across the network?

- A. DiffServ classifies and marks traffic at each node in the network.
- B. When using DiffServ, the network tries to deliver a particular kind of service that is based on the QoS that is specified by each packet.
- C. DiffServ tries to deliver a particular level of service on a per-flow basis across the network.
- D. DiffServ delivers a particular kind of service based on either a flow-based behavior or a per-hop behavior, depending on how the traffic was marked and classified at ingress.

**Answer:** A

**QUESTION:** 241

Exhibit



Refer to the exhibit. Which two of the following implementation methods will resolve the issue of overlapping extension numbers? (Choose two.)

- A. Implement a site code for each site that does not start with the digits 1 or 2.
- B. Implement an intersite prefix that does not conflict with the digits 1 or 2.
- C. Assign a unique username to each extension.
- D. Implement a private numbering plan.
- E. Implement an intersite prefix and a site code for each site. The prefix and site codes should not overlap with the extension numbers.

**Answer:** A, E

**QUESTION:** 242

Which command should you use to activate the analog voice port in voice-port configuration mode?

- A. voice-port slot/ port
- B. no shutdown
- C. cptone locale
- D. dial-type {dtmf | pulse}

**Answer:** B

**QUESTION:** 243

Which signaling protocol is defined by the ITU-T standard?

- A. H.323
- B. SIP
- C. MGCP
- D. SCCP

**Answer:** A

**QUESTION:** 244

Which codec complexity type allows medium-complexity codecs to be run in high-complexity mode, but with fewer (usually approximately half) of the channels available per DSP?

- A. low complexity
- B. medium complexity
- C. high complexity
- D. flex complexity

**Answer:** B

**QUESTION:** 245

What is matched first in an inbound dial peer?

- A. incoming called-number
- B. answer-address
- C. destination-pattern
- D. a dial peer with a voice port

**Answer:** A

**QUESTION:** 246

When marking traffic for Expedited Forwarding, how does a device that is not capable of recognizing DSCP interpret the EF binary string 101110?

- A. The device that cannot recognize DSCP will use best effort to forward the packet.
- B. The device that does not recognize DSCP will use 110 as the CoS value and forward the packet with a CoS of 6.
- C. The first device in the network that does not recognize DSCP will use 110 as the CoS value and will replace the DSCP value with a CoS of 6 and forward the packet.

D. The devices in the network that do not recognize DSCP will use the three high-order DSCP bits as the CoS setting, resulting in a CoS value of 5.

**Answer:** D

**QUESTION:** 247

Which three connections can utilize the priority command? (Choose three.)

- A. ATM PVCs
- B. serial links
- C. Fast Ethernet links
- D. Frame Relay links
- E. EtherChannel
- F. Fibre Channel

**Answer:** A, B, D

**QUESTION:** 248

Which signaling protocol is proprietary to Cisco?

- A. H.323
- B. SIP
- C. MGCP
- D. SCCP

**Answer:** D

**QUESTION:** 249

What does policy-based routing use to determine the next hop?

- A. routing tables
- B. packet options that were developed by the network admin
- C. destination address
- D. MAC address lookup table

**Answer:** D

**QUESTION:** 250

When a Cisco 7965 IP phone downloads an SCCP firmware file package, which file is

downloaded first by the IP phone from the TFTP server to describe the files it should request from the TFTP server?

- A. term45.default.loads
- B. cnu45.8-4-0-79.sbn
- C. term65.default.loads
- D. dsp45.8-4-0-79.sbn
- E. apps45.9-0-2ES2.sbn
- F. SCCP45.9-0-2SR1S.loads
- G. dsp45.8-4-0-79.sbn.
- H. jar45sccp.8-4-0-79.sbn
- I. cvm45sccp.8-4-0-79.sbn

**Answer:** F

**QUESTION:** 251

What are the two major types of VoIP gateways?

- A. E and M
- B. FXO and FXS
- C. CAS and CCS
- D. analog and digital

**Answer:** D

**QUESTION:** 252

Which is a function of RTP?

- A. call multiplexing
- B. encryption
- C. payload identification
- D. replay protection

**Answer:** C

**QUESTION:** 253

Using the Cisco QoS baseline model, what are the PHB, DSCP, and CoS values for voice traffic, respectively?

- A. EF, 42, and 3



- B. AF41, 42, and 7
- C. EF, 46, and 5
- D. AF41, 46, and 1

**Answer:** C

**QUESTION:** 254

When configuring a new Cisco 7965 SCCP phone in Cisco Unified Communications Manager Express, which load file needs to be included under telephony-service?

- A. term45.default.loads
- B. cnu45.8-4-0-79.sbn
- C. term65.default.loads
- D. dsp45.8-4-0-79.sbn
- E. apps45.9-0-2ES2.sbn
- F. SCCP45.9-0-2SR1S.loads
- G. dsp45.8-4-0-79.sbn.
- H. jar45sccp.8-4-0-79.sbn
- I. cvm45sccp.8-4-0-79.sbn

**Answer:** F

**QUESTION:** 255

What should you use to configure endpoint addressing if you are using Cisco Unified Communications Manager Express with SRST?

- A. POTS
- B. VoIP
- C. ephone-dn
- D. dial-peer

**Answer:** C

**QUESTION:** 256

Which three factors must be considered when calculating the total bandwidth of a VoIP call, in order to avoid voice quality issues? (Choose three.)

- A. codec size
- B. CRC usage
- C. data-link overhead
- D. sample size

E. capacity of network links

**Answer:** A, C, D

Download Full Version From <https://www.certkillers.net>



**DON'T KNOW**  
OR NO PREFERENCE

*Pass your exam at First Attempt....Guaranteed!*