



Cisco

642-427

*Troubleshooting Cisco Unified(R) Communications v8.0
(TVOICE v8.0)*

Answer: C

QUESTION: 72

Look at the following options. Which are SIP servers? (Select four.)

- A. Registrar
- B. Redirect
- C. Location
- D. Proxy

Answer: A, B, C, D

QUESTION: 73

The knowledge about RAS message is very important. Which of the following RAS messages can be sent by using either unicast or multicast?

- A. RRQ
- B. ARQ
- C. GRQ
- D. RIP

Answer: C

Explanation:

Typically, RAS communications is carried out via UDP through port 1719 (unicast) and 1718(multicast)

QUESTION: 74

Given the following configuration, what IP address will GK1 use to send and receive RAS messages?

```
GK1 (config)#interface serial 0/0/0
GK1 (config-if)#ip address 192.168.0.2 255.255.255.0
GK1 (config-if)#exit
GK1 (config)#interface serial 0/0/1
GK1 (config-if)#ip address 172.16.0.2 255.255.255.0
GK1 (config-if)#exit
GK1 (config)#gatekeeper
GK1 (config-gk)#zone local SanJose cisco.com 172.16.0.2
GK1 (config-gk)#zone remote Austin cisco.com 192.168.0.1
GK1 (config-gk)#zone prefix SanJose 2...
```

GK1 (config-gk)#zone prefix Austin 3...

- A. 192.168.0.2
- B. 172.16.0.2
- C. 192.168.0.1
- D. RAS messages will be load balanced between 192.168.0.2 and 172.16.0.2

Answer: B

QUESTION: 75

You are a network technician working in the Network Company. Recently, users complain that they cannot call the PSTN. With the help of testing, you find that the gateway is not switching to the secondary call agent when the primary call agent is unreachable. In order to permit the MGCP gateway to take use of a different call agent once the primary fails, which configuration should you make?

- A. Add ccm-manager fallback-mgcp command to the gateway.
- B. Add ccm-manager redundant-host command to the gateway
- C. Assign a Cisco Unified CallManager group including the secondary call agent to the gateway
- D. Define gateway as a non-gatekeeper-controlled intercluster trunk with the secondary Cisco Unified CallManager defined.

Answer: B

QUESTION: 76

Which RAS message does a gateway use to request admission to a network and to also request phone number to IP address resolution?

- A. ARQ
- B. IRQ
- C. LRQ
- D. RRQ

Answer: A

Explanation:

Admission messages between endpoints (like a gateway) and gatekeepers provide the basis for call admissions and bandwidth control. Gatekeepers authorize access to H.323 networks with the confirmation of or rejection of an admission request. This table defines the RAS admission messages

Admission Messages	
ARQ (Admission_Request)	An attempt by an endpoint to initiate a call.
ACF (Admission_Confirm)	An authorization by the gatekeeper to admit the call. This message contains the IP address of the terminating gateway or gatekeeper and enables the original gateway to initiate call control signaling procedures.
ARJ (Admission_Reject)	Denies the request of the endpoint to gain access to the network for this particular call.

1

http://www.cisco.com/en/US/tech/tk1077/technologies_tech_note09186a00800c5e0d.shtml

QUESTION: 77

As a network technician, you should be familiar with RTCP. Which of the following statements best describes a function of RTCP?

- A. RTCP provides encryption, message authentication and integrity, and anti-replay service for voice streams.
- B. RTCP uses even-numbered UDP ports in the range 16,384 to 32,767 to transport voice payloads
- C. RTCP provides out-of-band control information for an RTP flow
- D. RTCP caches an RTP packet-Layer 3 and Layer 4 headers in the routers at each end of a link, resulting in lower bandwidth demand for subsequent RTP packets.

Answer: C

QUESTION: 78

You are a voice technician. If you are required to solve latency issues in a VoIP network, which measures will you take? (Select three.)

- A. Use dejitter buffers
- B. Increase bandwidth
- C. Prioritize voice packets
- D. Fragment data packets

Answer: B, C, D

QUESTION: 79

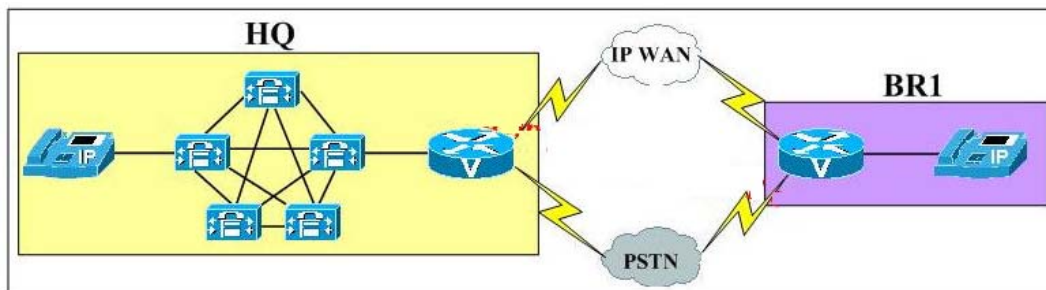
Please choose two methods of LRQ forwarding from the following items. (Select two.)

- A. LRQ init
- B. LRQ blast
- C. LRQ static
- D. LRQ sequential

Answer: B, D

QUESTION: 80

Look at the following exhibit carefully. You are a network technician working in a middle-sized company. Some users complain that the call is always dropped as soon as it connects when they dial from BR1 to HQ through the IP WAN. Please choose the most possible reason of this issue from the following statements.



- A. H.245 capabilities exchange has failed due to insufficient bandwidth.
- B. A codec mismatch has occurred and transcoders or additional transcoding resources need to be configured at HQ.
- C. Packet loss has kept H.225 setup messages from completing the call.
- D. MTP resources need to be configured on the BR1 gateway.

Answer: B

QUESTION: 81

You are a network technician with many years' experience. Many users complain that they can hear echo when their calls go out an H.323 gateway. You have made some testing for the gateway and have changed the configuration. So the ERL level turns to be 6 dB. Furthermore, the echo-cancel coverage value is raised to 64 ms. Please choose the effect on the voice quality after this modification.

- A. Consonants will be chopped by the echo canceller.
- B. The increase in echo-cancel coverage will have no effect on voice quality.
- C. The ends of sentences will be chopped by the echo canceller.

D. The echo canceller will take 2-3 seconds longer to converge at the beginning of the call.

Answer: D

Explanation:

echo-cancel coveragecommand Adjusts the coverage size of the echo canceller. This command enables cancellation of voice that is sent out through the interface and received back on the same interface within the configured amount of time. If the local loop(the distance from the interface to the connected equipment that is producing the echo) is longer, the configured value of this command should be extended. If you configure a longer value for this command, it takes the echo canceller longer to converge. In this case, the user might hear a slight echo when the connection is initially set up. If the configured value for this command is too short, the user might hear some echo for the duration of the call because the echo canceller is not canceling the longer-delay echoes. There is no echo or echo cancellation on the network side (for example, the non-POTS side of the connection).

Download Full Version From <https://www.certkillers.net>



DON'T KNOW
OR NO PREFERENCE

Pass your exam at First Attempt....Guaranteed!