

Nokia

4A0-C02 Exam

Nokia SRA Composite Exam



Thank you for Downloading 4A0-C02 exam PDF Demo

You can Buy Latest 4A0-C02 Full Version Download

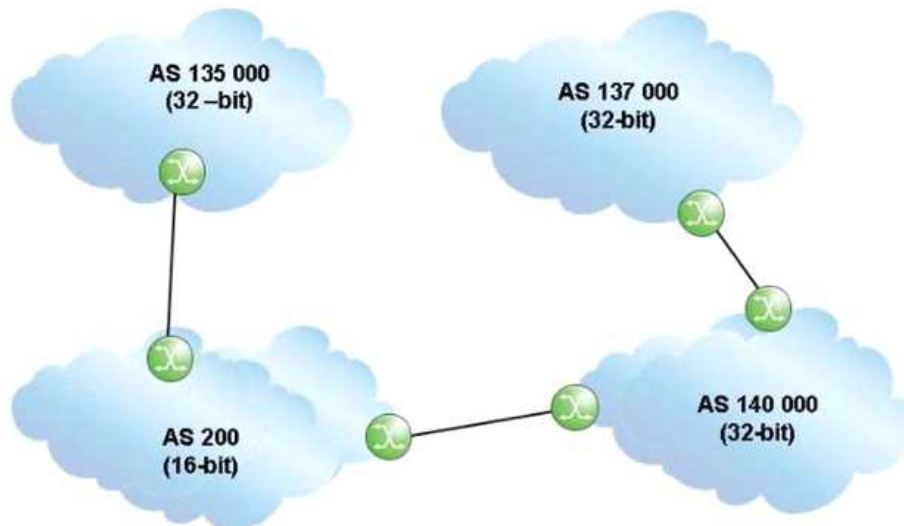
<https://www.certkillers.net/Exam/4A0-C02>

<https://www.certkillers.net>

Version: 8.0

Question: 1

Click the exhibit.



An update travels from AS 135000 to AS 137000, traversing both 32-bit and 16-bit AS paths. What will the AS Path be when the update reaches AS 137000?

- A. 140000 200 135000
- B. 137000 140000 200 135000
- C. 140000 23456 135000
- D. 135000 200 140000

Answer: A

Question: 2

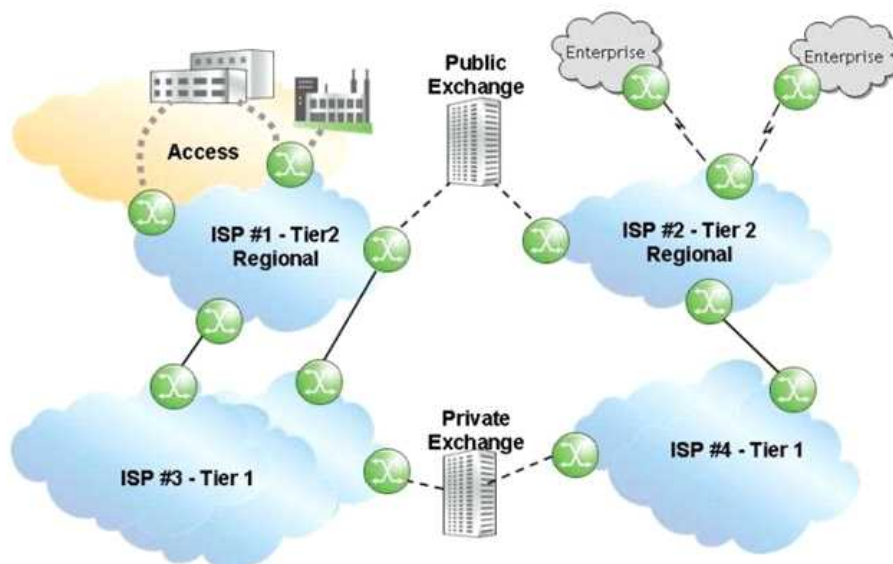
Which of the following is FALSE regarding the 16-bit public autonomous system numbers?

- A. They are allocated to the RIRs by ICANN/IANA.
- B. They are used when connecting ASs on the Internet.
- C. They range from 1 to 56319.
- D. They are assigned by the ISPs for enterprise networks.

Answer: D

Question: 3

Click the exhibit.



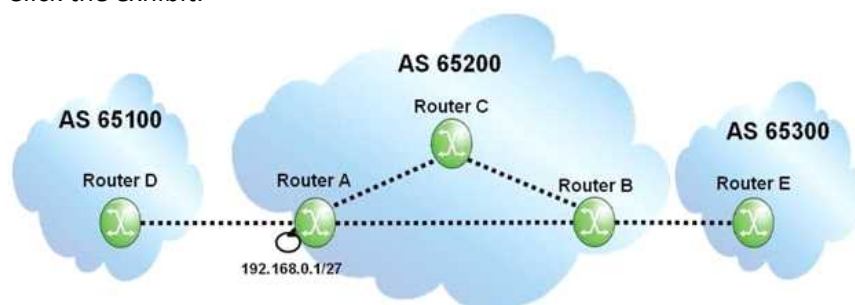
Given that ISP 1 and ISP 2 are Tier 2 providers, and that ISP 3 and ISP 4 are Tier 1 providers, what is the most likely relationship between the ISPs?

- A. ISP 1 and ISP 2 have a public transit relationship, while ISP 3 and ISP 4 have a private transit relationship.
- B. ISP 1 and ISP 2 have a private transit relationship, while ISP 3 and ISP 4 have a public transit relationship.
- C. ISP 1 and ISP 2 have a private peering relationship, while ISP 3 and ISP 4 have a public peering relationship.
- D. ISP 1 and ISP 2 have a public peering relationship, while ISP 3 and ISP 4 have a private peering relationship.

Answer: D

Question: 4

Click the exhibit.



If router A originates an update for prefix 192.168.0.1/27, what will the update contain when it reaches router B?

- A. AS Path of 65200, local-preference of 100.
- B. AS Path of 65200, local-preference of None.
- C. Null AS Path, local-preference of 100.

D. Null AS Path, local-preference of None.

Answer: C

Question: 5

BGP is configured on two peers, routers A and B. Router A is configured with a Hold Time timer of 60 seconds and a Keepalive timer of 25 seconds. Router B is configured with a Hold Time timer of 90 seconds and a Keepalive timer of 70 seconds. What will the active Keepalive timer be on router B?

- A. 70 seconds
- B. 25 seconds
- C. 20 seconds
- D. 30 seconds

Answer: C

Question: 6

Which of the following statements regarding the Internet is FALSE?

- A. It is a global network relying on interconnections provided by Internet service providers.
- B. It is a continuous and interconnected set of public IP networks, advertised and shared across the globe.
- C. It is a settlement-free global network that provides interconnection between Internet service providers.
- D. It is a network that allows any Internet service provider to reach every other Internet service provider in the world.

Answer: C

Question: 7

Which of the following is the minimum requirement for an AS to be considered multi-homed?

- A. A single connection to a single service provider.
- B. Two connections to a single service provider.
- C. Two connections to two different service providers.
- D. Multiple connections to different service providers.

Answer: B

Question: 8

What are the well-known mandatory BGP attributes?

- A. Origin, Next Hop and Local Preference.
- B. Local preference, AS Path and Next Hop.
- C. Aggregator, Next Hop and AS Path.
- D. AS Path, Next Hop and Origin.

Answer: D

Question: 9

Which of the following best describes the relationship between locally configured policies and the direction of traffic?

- A. Import policies affect the way the local AS receives traffic, while export policies affect the way it sends traffic.
- B. Import policies affect the way the local AS sends traffic, while export policies affect the way it receives traffic.
- C. Both import and export policies affect the way the local AS receives traffic, but not the way it sends traffic.
- D. Both import and export policies affect the way the local AS sends traffic, but not the way it receives traffic.

Answer: B

Question: 10

What kind of BGP attribute is the Local Preference?

- A. Optional transitive attribute.
- B. Optional non-transitive attribute.
- C. Well-known mandatory attribute.
- D. Well-known discretionary attribute.

Answer: D

Question: 11

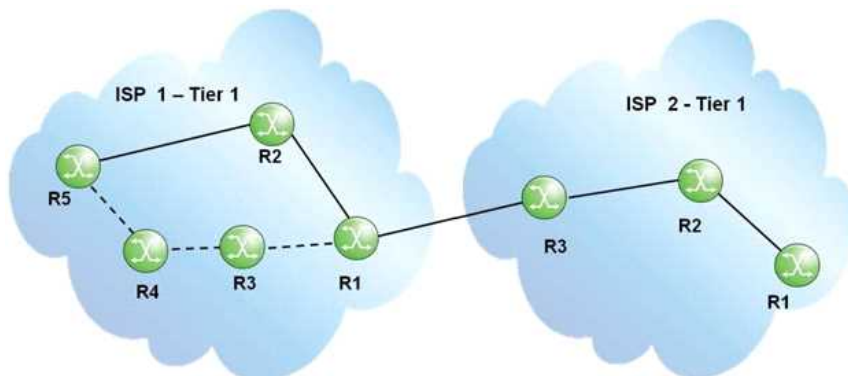
Which of the following is TRUE?

- A. There can only be one community associated with a route.
- B. Community is an optional non-transitive attribute.
- C. Community is an optional transitive attribute.
- D. Community is a well-known discretionary attribute.

Answer: C

Question: 12

Click the exhibit.



Legend

—————	Physical Connection and IGP metric 10
- - - - -	Physical Connection and IGP metric 100

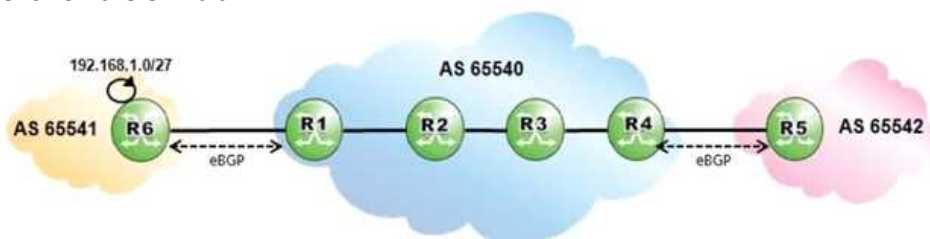
Assuming a full iBGP mesh in ISP 1, how does router R1 in ISP 1 handle a BGP update received from ISP 2?

- A. The update is sent to router R2 in ISP 1.
- B. The update is sent to routers R2 and R3 in ISP 1.
- C. The update is sent to all routers in ISP 1.
- D. The update is sent to routers R2 and R3 in ISP 1, and to router R3 in ISP 2.

Answer: C

Question: 13

Click on the exhibit.



AS 65540 is using MPLS to provide BGP shortcuts for its iBGP routing. Which routers must be configured with the "configure router bgp igp-shortcuts rsvp-te" command?

- A. Routers R6, R1, R4 and R5.
- B. Routers R1 and R4.
- C. Routers R1, R2, R3 and R4.
- D. Routers R2 and R3.

Answer: B

Question: 14

Which of the following is TRUE if the state of one BGP neighbor shows Active?

- A. The neighbor will send a Keepalive message.
- B. The router is trying to initiate a TCP connection to that neighbor.
- C. The router received an Open message with the correct parameters.
- D. The router is actively exchanging updates with that neighbor.

Answer: B

Question: 15

Which of the following about default BGP behavior is FALSE?

- A. Next Hop is modified in iBGP updates.
- B. Origin Code is NOT modified in eBGP updates.
- C. AS Path is modified in eBGP updates.
- D. Local Preference is NOT modified in iBGP updates.

Answer: A

Question: 16

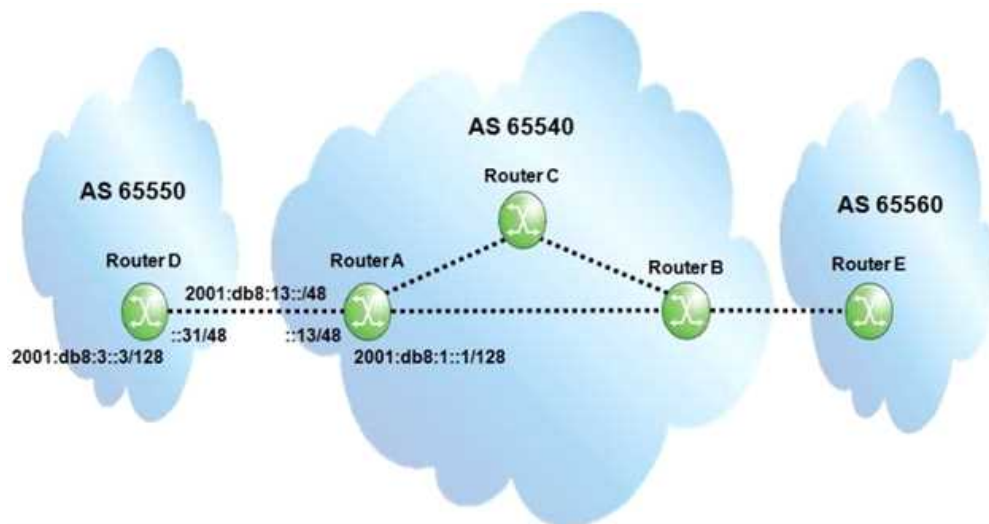
Why is a full mesh of iBGP peers required?

- A. To ensure proper route propagation inside a transit AS.
- B. To ensure that all routers are directly connected.
- C. To ensure that all routers run iBGP inside a transit AS.
- D. To maximize control plane scalability.

Answer: A

Question: 17

Click the exhibit.



Assume all router-IDs are properly configured. Which of the following configurations is required on the Alcatel-Lucent 7750 SR router A to establish an IPv6 BGP session to router D?

- A.

```
group "IPv6_eBGP"  
family ipv6  
type external  
peer-as 65550  
neighbor 2001:DB8:3::3  
exit  
exit
```
- B.

```
group "IPv6_eBGP"  
type external  
peer-as 65550  
neighbor 2001:DB8:3::3  
exit  
exit
```
- C.

```
group "IPv6_eBGP"  
family ipv6  
peer-as 65550  
neighbor 2001:DB8:13::31  
exit  
exit
```
- D.

```
group "IPv6_eBGP"  
type external  
peer-as 65550  
neighbor 2001:DB8:13::31  
exit  
exit
```

- A. Option A
- B. Option B
- C. Option C
- D. Option D

Answer: C

Question: 18

Consider two Alcatel-Lucent 7750 SRs in AS 65540. Router R1 has system address 10.10.10.1, and router R2 has system address 10.10.10.2. Which of the following configurations on router R2 can

establish a BGP session with router R1?

- A. R2>config>router>bgp# info

```
-----  
group "iBGP"  
  family ipv4  
  peer-as 65540  
  neighbor 10.10.10.1  
    peer-as 65550  
  exit  
exit
```

- B. R2>config>router>bgp# info

```
-----  
group "iBGP"  
  family ipv6  
  peer-as 65540  
  neighbor 10.10.10.1  
    family ipv4  
  exit  
exit
```

- C. R2>config>router>bgp# info

```
-----  
group "iBGP"  
  family ipv4  
  peer-as 65540  
  neighbor 10.10.10.1  
    family ipv4  
    local-address 10.10.10.1  
  exit  
exit
```

- D. R2>config>router>bgp# info

```
-----  
group "iBGP"  
  family ipv4  
  local-as 65540  
  local-address 10.10.10.2  
  neighbor 10.10.10.1  
  exit  
exit
```

- A. Option A
B. Option B
C. Option C
D. Option D

Answer: B

Question: 19

A router in AS 65100 receives three routes for 138.120.0.0/16. The first route has an AS Path of 65200 65400 65300 and a local preference of 150. The second route has an AS Path of 65200 65300 and a local preference of 100. The third route has an AS path of 65600 65300 and a local preference of 200. Which route will appear in the RIB-In?

- A. Only the first route will appear in the RIB-In.
- B. Only the second route will appear in the RIB-In.
- C. Only the third route will appear in the RIB-In.
- D. All routes will appear in the RIB-In.

Answer: D

Question: 20

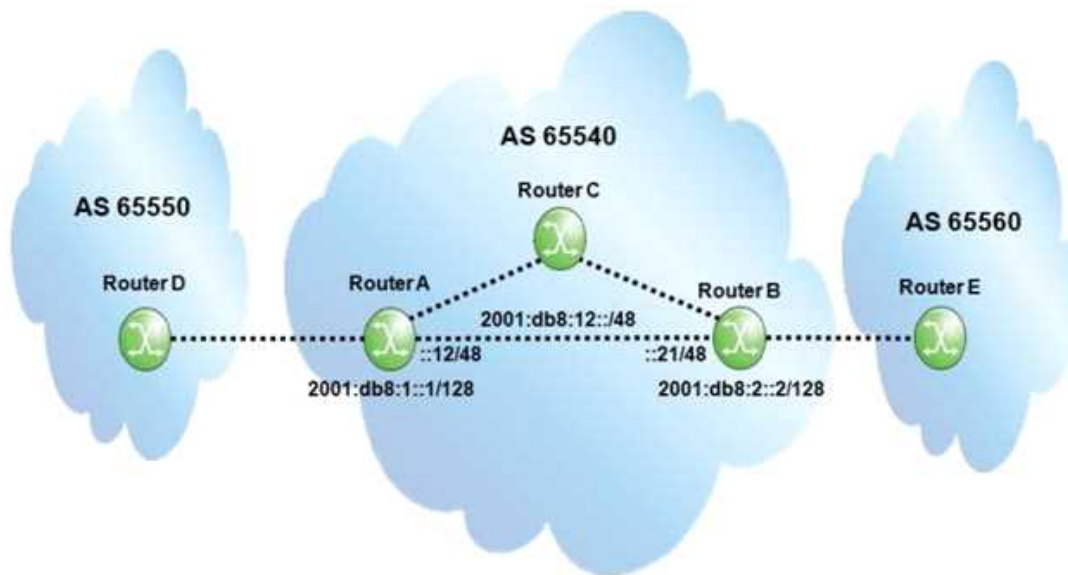
The user of an Alcatel-Lucent 7750 SR wants to see the effect of changing an import policy immediately. What is the best command to force re-evaluation of the import policy with minimal impact?

- A. Configure router bgp shutdown
- B. Clear router bgp neighbor <ip-address> soft
- C. Clear router bgp neighbor <ip-address> soft-inbound
- D. Clear router bgp protocol

Answer: C

Question: 21

Click the exhibit.



Assume all router-IDs are properly configured, and link-local IPv6 addresses are used to establish the eBGP sessions. Which of the following is the MINIMAL configuration required on router A so that router B can exchange traffic with router D?

- A.

```
group "IPv6_iBGP"  
  family ipv6  
  next-hop-self  
  peer-as 65540  
  neighbor 2001:DB8:2::2  
  exit  
exit
```
- B.

```
group "IPv6_iBGP"  
  next-hop-self  
  type internal  
  peer-as 65540  
  neighbor 2001:DB8:2::2  
  exit  
exit
```
- C.

```
group "IPv6_iBGP"  
  family ipv6  
  peer-as 65540  
  neighbor 2001:DB8:2::2  
  exit  
exit
```
- D.

```
group "IPv6_iBGP"  
  family ipv6  
  next-hop-self  
  type internal  
  neighbor 2001:DB8:2::2  
  exit  
exit
```

- A. Option A
- B. Option B
- C. Option C
- D. Option D

Answer: C

Question: 22

A BGP router has loopback interfaces 192.168.1.1/27 and 192.168.2.1/27 advertised into BGP using the following export policy. The "aggregate 192.168.0.0/16" command is executed. What is the effect of this configuration?

```
policy-statement "Export Loopbacks"  
  entry 10  
    from  
      protocol direct  
    exit  
    action accept  
  exit  
exit
```

- A. A single route for 192.168.0.0/16 is advertised.
- B. BGP routes 192.168.1.0/27, 192.168.2.0/27, and 192.168.0.0/16 are advertised.
- C. BGP routes 192.168.1.0/27 and 192.168.2.0/27 are advertised, and 192.168.0.0/16 appears as a "Blackhole" route in the route table only.
- D. The given export policy is invalid.

Answer: C

Question: 23

When an Alcatel-Lucent 7750 SR receives a BGP route with an AS Path loop, what action is taken by default?

- A. The route is ignored.
- B. The route is flagged as invalid and placed in the LOC-RIB.
- C. The route is flagged as invalid and placed in the RIB-In.
- D. The route is flagged as invalid and placed in the RIB-Out.

Answer: C

Question: 24

What happens to a route that is rejected by an import policy on an Alcatel-Lucent 7750 SR?

- A. The route is discarded.
- B. The route is kept in the RIB-In, but marked as an invalid route.
- C. The route is moved to the LOC-RIB, but not marked as a used route.
- D. The route is moved to the route table, but not to the FIB.

Answer: B

Question: 25

A router receives two routes from its neighbors: a route from OSPF for 10.0.0.0/24, and a route from BGP for 10.0.0.0/8. Both routes have reachable next hops. Which of the following is TRUE?

- A. Only the BGP route is in the route table.
- B. Both routes are in the route table.
- C. None of the routes is in the route table.
- D. Only the OSPF route is in the route table.

Answer: B

Thank You for trying 4A0-C02 PDF Demo

To Buy Latest 4A0-C02 Full Version Download visit link below

<https://www.certkillers.net/Exam/4A0-C02>

Start Your 4A0-C02 Preparation

[Limited Time Offer] Use Coupon “CKNET” for Further discount on your purchase. Test your 4A0-C02 preparation with actual exam questions.

<https://www.certkillers.net>