



# VMware

## 3V0-732 Exam

### VMware Certified Advanced Professional 7 - Cloud Management and Automation Design Exam

Thank you for Downloading 3V0-732 exam PDF Demo

You can Buy Latest 3V0-732 Full Version Download

<https://www.certkillers.net/Exam/3V0-732>

<https://www.certkillers.net>

## Version: 9.0

---

### Question: 1

---

A network team has decided to utilize NSX to enable microsegmentation in its environment. Several networks have been created to support a three-tiered application network. An architect has been asked to incorporate this into the vRealize Automation environment and consume these networks on demand.

What are two things the architect needs to take into consideration in this scenario? (Choose two.)

- A. usable Subnet Mask in the network profiles
- B. routed network profiles assigned to virtual machine port groups in the reservation
- C. external network profile for each application tier
- D. routed network profile for each application tier

---

**Answer: CD**

---

Reference:

<https://www.vmware.com/content/dam/digitalmarketing/vmware/en/pdf/products/nsx/vmwareautomation-fundamentals-book.pdf>

---

### Question: 2

---

An architect is tasked with designing a backup strategy for vRealize Orchestrator as part of an upcoming production rollout of a Cloud Management Platform.

Which are two valid backup design recommendations? (Choose two.)

- A. If vRealize Orchestration is embedded within the vRealize Automation appliance, perform its backup along with Manager Services for vRealize Automation.
- B. Perform backup of vRealize Orchestrator virtual machines in the order of the startup priority.
- C. If vRealize Orchestrator is a standalone component, perform its backup before backing up vRealize Automation components in no particular order.
- D. Perform file-level backup of the Orchestrator database only after a successful full virtual machine backup.

---

**Answer: CD**

---

Reference:

<https://pubs.vmware.com/vrealize-suite-60/index.jsp?topic=%2Fcom.vmware.vrsuite6.0.backuprestore.doc%2FGUID-87A2DCE2-D8DB-4077-8FC2-8EAFB9AB46A5>

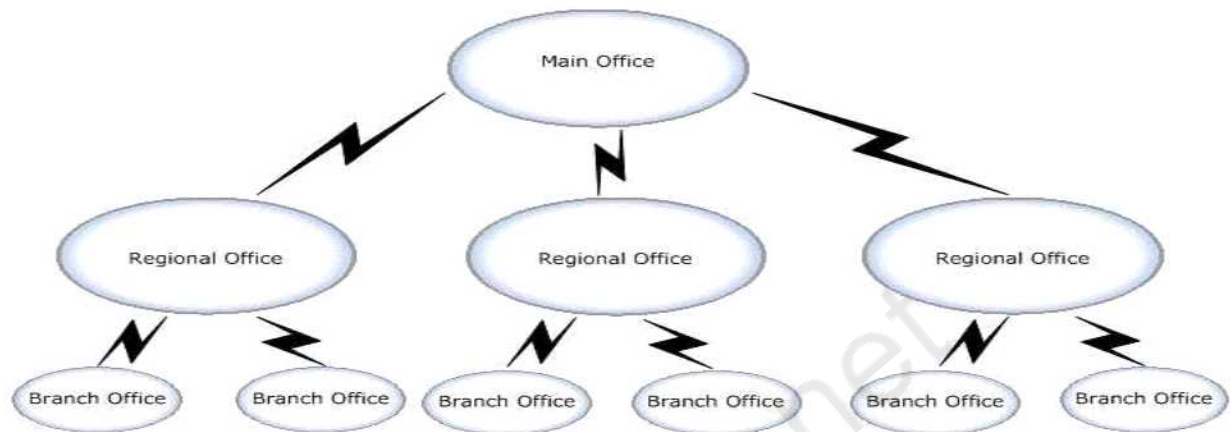
CertKillers.net

---

**Question: 3**


---

A company has a main office, three regional offices, and six branches offices. The network links are configured as shown in the exhibit. View the Exhibit:



During information gathering, an architect records:

The regional offices are located in secure bunkers. The CTO feels this would be a good location for all the vRealize Automation components to meet their BC/DR objectives. However, the CTO is looking for the best design while maintaining their very high security requirements.

The branch offices are located in very remote locations with unpredictable network performance. Reliance on the main and regional offices needs to be minimal while still allowing provisioning of machines in the branch offices. The branch offices consist of three host vSphere clusters.

There is synchronous vSphere Metro Storage Cluster (vMSC) between the regional offices as well as replicated backups between the regional offices with replication running nightly. The CEO wants to have the lowest possible RPO and RTO of the vRealize portal including the ability to manage already provisioned machines while NOT increasing the amount of data being replicated between the regional offices as much as possible.

Referring to the exhibit, which two design specifications can the architect recommend to meet requirements? (Choose two.)

- A. distributed vRealize Automation management solution in the main office
- B. vSphere agents in each of the branch offices
- C. distributed vRealize Automation management solution in each of the regional offices
- D. distributed vRealize Automation management solution across the regional offices
- E. vSphere agents in the regional offices that manage the regional and branch offices

---

**Answer: DE**

---



---

**Question: 4**


---

The architect for a vRealize Automation project has a customer who wants the ability to do 'Backup

as a

Service' capabilities through day two operations. This is to allow end users to do on-demand backup and

restores of their vRealize Automation workload machines without the need to open a ticket with Support.

To which two infrastructure qualities does this technical requirement map? (Choose two.)

- A. Recoverability
- B. Security
- C. Manageability
- D. Availability
- E. Performance

---

**Answer: AD**

---

---

### Question: 5

---

Which two-factor authentication mechanism is supported by vRealize Automation?

- A. Mobile SSO (Secure Sign-On) authentication
- B. AirWatch Cloud Connector authentication
- C. Certificate-based authentication
- D. RADIUS (Remote Authentication Dial-In User Service) authentication

---

**Answer: D**

---

---

### Question: 6

---

The tenant administrator for a company's vRealize Automation deployment is asked to create a profile for a user that should be able to assemble the blueprints that define catalog items for consumers to request from the service catalog.

Which tenant role should this user be granted?

- A. Fabric administrator
- B. Catalog architect
- C. Blueprint administrator
- D. Application architect

---

**Answer: D**

---

Reference:

<https://docs.vmware.com/en/vRealize-Automation/7.3/com.vmware.vrA.prepare.use.doc/GUID-135436AC-CF31-44A1-A358-61D2B68183AE>

---

**Question: 7**

---

During requirements gathering for an organization's private cloud on a single machine catalog, the following requirements were identified:

A user should be able to select a data center location which is mapped to a custom resource by the fabric administrator.

A Guest VM custom hostname format should be based on the first two letters of the data center location.

A generated VM custom hostname format should be displayed as a drop-down in the catalog request page using a vRealize Automation (vRA) custom property backed by external vRealize Orchestrator (vRO) action.

Which design recommendation would best address these requirements?

A. Define a custom property “\_vrm.DataCenter.Location” with static datacenter values, assign it to the blueprint with the “Show in the request” check box selected and map it as an input to the required vRO action.

B. Define a custom property “Vrm.DataCenter.Location” with static datacenter values, assign it to the blueprint with the “Show in the request” check box selected and map it as an input to the required vRO action.

C. Enable “Display location on request” in the blueprint's VM machine type, map the built-in “Vrm.DataCenter.Location” custom property as an input to the required vRO action.

D. No new custom property is required since the fabric administrator has already mapped datacenter locations to the correct compute resources. Map the built-in “\_vrm.DataCenter.Location” custom property as an input to the required vRO action.

---

**Answer: C**

---

Reference:

<https://docs.vmware.com/en/vRealize-Automation/7.5/com.vmware.vrA.prepare.use.doc/GUIDFA2ED665-4973-435C-A93B-8E4EAB5D1F8A>

---

**Question: 8**

---

A cloud architect is trying to determine the operational impacts of adding another business group (DevOps) to the company's existing vRealize Automation (vRA) deployment. Existing users have reported that response times for login into their vRA infrastructure has spiked recently and it is taking longer than usual. The Active Directory user base, after the addition of DevOps users, could increase to well over 100,000 users and 50 groups.

What is the VMware-recommended design to address this scenario?

A. Add an additional connector to the existing Active Directory.

- B. Add an additional IaaS proxy agent.
- C. Add an additional IaaS DEM server.
- D. Change the default access policy when adding the additional user base.
- E. Increase the vRA virtual appliance memory allocation on each machine as per sizing guidelines.

---

**Answer: E**

---

---

**Question: 9**

---

A cloud architect is tasked with designing a Guest virtual machine (VM) request form for an organization's new vRealize Automation (vRA) implementation. Its current PowerCLI VM request tool uses a PowerShell script that retrieves user IDs from Active Directory, which is the same identity source for vRealize Automation. The intent of the script is to retrieve and display John Smith when the actual value in Active Directory is JSmith01.

What is the most secure way to utilize the same script for user's display name in the vRA request form?

- A. Design a schedule vRealize Orchestrator workflow to execute the PowerShell Script and update the vRealize Automation drop-down custom property with static values.
- B. Design a schedule vRealize Orchestrator (vRO) workflow to execute the PowerShell Script and store values in vRO, then utilize the vRA external drop-down to retrieve these values from vRO.
- C. Design a display custom property in the vRA 'Administration/Active Directory Policy' that maps to the correct organizational unit.
- D. Create a drop-down custom property with external values that returns a display name using the existing PowerShell script.

---

**Answer: D**

---

---

**Question: 10**

---

A company is currently experiencing long infrastructure provisioning times, given that the process to ask, review, approve and deploy their services is manual with many people involved. It is considering vRealize

Automation as a resolution, but it wants to better understand how much resources it is going to need.

Which three should the architect consider when determining the appropriate vRealize Automation deployment size for this environment? (Choose three.)

- A. number of managed machines
- B. number of concurrent machine provisions
- C. number of catalog items
- D. number of blueprints

E. number of endpoints

---

**Answer: BCD**

---

CertKillers.net



## Thank You for trying 3V0-732 PDF Demo

To Buy Latest 3V0-732 Full Version Download visit link below

<https://www.certkillers.net/Exam/3V0-732>

## Start Your 3V0-732 Preparation

**[Limited Time Offer]** Use Coupon “CKNET” for Further discount on your purchase. Test your 3V0-732 preparation with actual exam questions.

<https://www.certkillers.net>