



**Cisco**

**350-023**

*CCIE(R) Written: WAN Switching*

**Answer: B**

**QUESTION: 385**

In standard ATM ABR network congestion control, the ICR is:

- A. The amount at which the source increments its cell rate in case no congestion is experienced
- B. The internal cell rate the switch is allowing the CPE to send
- C. The rate at which the source should send initially or after an idle period
- D. None of the above

**Answer: C**

**QUESTION: 386**

What is true about Cisco IGX transmit queues for Frame Relay?

- A. There is a queue for every Frame Relay connection going from the CPE to the Cisco IGX switch.
- B. They do not apply to Foresight connections.
- C. There is a queue for every Frame Relay port going from the Cisco IGX switch to the CPE.
- D. It is recommended that these queues be no larger than 100 bytes.

**Answer: C**

**QUESTION: 387**

What is true concerning ATM to FR Service Interworking?

- A. It is defined by FRF.
- B. Both CPEs need to run Frame Relay.
- C. It is defined in FR-SSCS.
- D. Need two Interworking functions.

**Answer: C**

**QUESTION: 388**

Which is not a QoS parameter?

- A. Peak-to-peak Cell Delay Variation
- B. Connection admission control
- C. Maximum Cell Transfer Delay
- D. Cell Loss Ratio

**Answer:** B

**QUESTION:** 389

When connected to a T1 ISDN line from a PBX, how can the on-hook/off-hook status be monitored on a CDP/CVM?

- A. Use of the dsp sig command
- B. Use of the dsp const command
- C. Use of the dsp cln command
- D. it is not possible to observe the on-hook/off-hook for this configuration.

**Answer:** D

**QUESTION:** 390

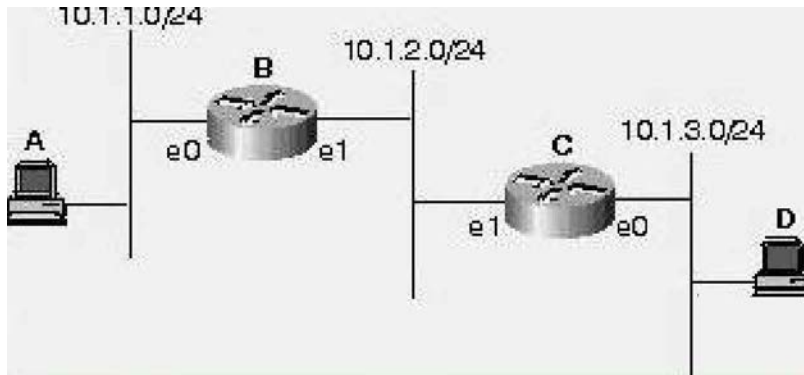
A router interface address is 180.60.45.96 with a mask of 255.255.255.224. What configuration statement will allow this interface to participate in OSPF Area 0?

- A. router ospf 1  
network 180.60.45.96 255.255.255.32 area 0
- B. router ospf 1  
network 180.60.45.96 0.255.255.224 area 0
- C. router ospf 1  
network 180.60.45.96 0.0.0.31 area 0
- D. router ospf 1  
network 180.60.45.96 0.0.0.224 area 0

**Answer:** C

**QUESTION:** 391

Click the Exhibit to view the topology. In this network, Host A is trying to reach Host D. There is no routing protocol running, but Router B and C have the following static routes configured: Router B: ip route 10.1.3.0 255.255.255.0 ethernet 1 Router C: ip route 10.1.1.0 255.255.255.0 ethernet 1



- A. This will not work because Router B has no idea of how to forward traffic to the 10.1.3.0/24 network.
- B. This will work because Router B will recognize that Router C is on the 10.1.2.0/24 network through a router discovery protocol and will forward traffic for 10.1.3.0/24 to Router C.
- C. This will not work because a broadcast interface in a static route command cannot be specified.
- D. This will work because Router B will ARP for Host D's IP address on the 10.1.2.0/24 network and Router C will answer,

**Answer:** D

**QUESTION:** 392

Click the Exhibit button to view the configuration. Which addresses below are appropriate supernets to contain the addresses shown in the exhibit? (multiple answer)

192.168.10.0/25  
 192.168.16.64/26  
 192.168.0.0/27

- A. 192.168.0.0/16
- B. 192.168.0.0/19
- C. 192.168.32.0/19
- D. 192.168.1.0/24

**Answer:** A,B

**QUESTION:** 393

Which are the correct ways to release IBGP from the condition that all IBGP neighbors need to be fully meshed? (multiple answer)

- A. Configure local preference
- B. Configure route reflectors
- C. Configure IBGP neighbors several hops away
- D. Configure confederations

**Answer:** B,D

**QUESTION:** 394

Click the Exhibit button to view the configuration. Look at the router configuration above. If this router has a configuration-register setting of 0x102, select the proper boot sequence:

```
version 11.2
!
hostname router
!
boot system flash slot0:rsp-isv-mz.112-8.P
enable password cisco
```

- A. The router will try to use the image "rsp-isv-mz.112-8.P" on slot 0, then attempt to boot from a network server, and finally boot from ROM
- B. The router will try use the image "rsp-isv-mz. 112-8.P" on slot 0, then attempt to boot from any other valid image in flash, and finally boot from ROM.
- C. The router will try to use the image "rsp-isv-mz.112-8.P" onslot0, and then it will boot from ROM.
- D. The router will try to use the image "rsp-isv-mz. 112-8.P" on slot 0, and then attempt to boot from a network server.

**Answer:** A

**QUESTION:** 395

What does NOT contribute to lowered throughput in practical IP over ATM networks?

- A. ILMI overhead
- B. SAR delay
- C. Cell tax
- D. Cell padding

**Answer:** A

**QUESTION:** 396

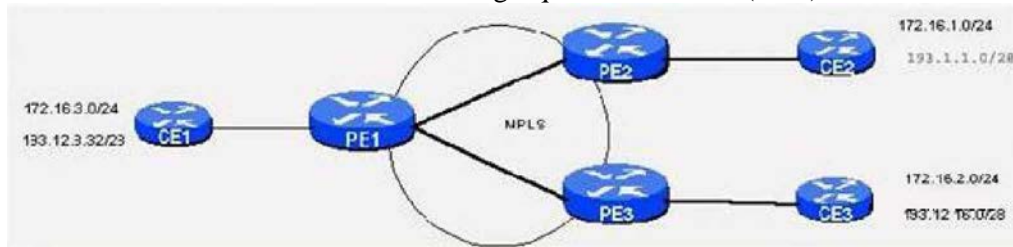
Regarding Port IDs, what statement is false?

- A. Port IDs are assigned by each node.
- B. Port IDs are advertised in Hello messages.
- C. port IDs are unique network wide.
- D. Port ID is 32 bytes.

**Answer:** C

**QUESTION:** 397

Click the Exhibit button to view the topology. In the MPLS network shown, which subnets would be in the same Forwarding Equivalence Class (FEC) on router PE1



- A. 172.16.3.0/24 and 193.1.1.0/28
- B. 172.16.1.0/24 and 172.16.2.0/24
- C. 172.16.1.0/24 and 193.1.1.0/28
- D. 172.16.1.0/24, 172.16.2.0/24, and 172.16.3.0/24

**Answer:** C

**QUESTION:** 398

For an OC-48 signal (2.5Gb/s), what is the BER (bit error rate) if there is 1 bit error every four days?

- A. 10E-12
- B. 10E-13
- C. 10E-14
- D. 10E-15
- E. 10E-16

**Answer:** D

**QUESTION:** 399

A CSU/DSU usually has two separate functions built into a single unit. Which statements are true?

- A. The network is plugged into the CSU.
- B. The network is plugged into the DSU.
- C. The CPE is plugged into the CSU.
- D. The CPE is plugged into the DSU.

**Answer:** A,D

Download Full Version From <https://www.certkillers.net>



**DON'T KNOW**  
OR NO PREFERENCE

*Pass your exam at First Attempt....Guaranteed!*