



Cisco

300-370 Exam

Cisco Troubleshooting Cisco Wireless Enterprise Networks Exam

Thank you for Downloading 300-370 exam PDF Demo

You can Buy Latest 300-370 Full Version Download

<https://www.certkillers.net/Exam/300-370>

<https://www.certkillers.net>

Version: 13.0

Question: 1

Refer to the exhibit.

```
Apr 8 20:02:55.477: RADIUS(00000031): Send Access-Request
  to 10.0.0.3:1234 id 21645/145, len 139
Apr 8 20:02:55.478: RADIUS: authenticator B6 F7 BB 41 0E 9F 44 D1
  - 9A F8 E2 D7 5D 70 F2 76
Apr 8 20:02:55.478: RADIUS: User-Name          [1]    9    "aironet"
Apr 8 20:02:55.478: RADIUS: Framed-MTU        [12]   6    1400
Apr 8 20:02:55.478: RADIUS: Called-Station-Id [30]  16   "0005.9a39.0374"
Apr 8 20:02:55.478: RADIUS: Calling-Station-Id [31]  16   "0002.8aa6.304f"
Apr 8 20:02:55.478: RADIUS: Service-Type     [6]    6    Login      [1]
Apr 8 20:02:55.478: RADIUS: Message-Authenticator [80]  18   *
Apr 8 20:02:55.478: RADIUS: EAP-Message     [79]  14
  omitted
Apr 8 20:03:15.470: RADIUS/DECODE:
  parse response; FAIL
Apr 8 20:03:15.470: dot11_auth_dot1x_parse_aaa_resp:
  Received server response: FAIL
Apr 8 20:03:15.470: dot11_auth_dot1x_parse_aaa_resp:
  found eap pak in server response
Apr 8 20:03:15.470: dot11_auth_dot1x_parse_aaa_resp:
  detailed aaa_status 1
Apr 8 20:03:15.471: dot11_auth_dot1x_run_rfsm:
  Executing Action(SERVER_WAIT, SERVER_FAIL) for 0002.8aa6.304f
Apr 8 20:03:15.471: dot11_auth_dot1x_send_client_fail:
  Authentication failed for 0002.8aa6.304f
Apr 8 20:03:15.471: %DOT11-7-AUTH_FAILED: Station 0002.8aa6.304f
  Authentication failed
```

A client reports being unable to log into the wireless network. According to the output, which network information should be verified?

- A. the Failed Attempts log on the authentication server
- B. that the AP has IP connectivity to the authentication server
- C. that the user has an account on the authentication server
- D. that the authentication and accounting configuration are correct

Answer: B

Question: 2

Refer to the exhibit.

```

Dec 7 13:56:09.373: dot11_auth_dot1x_start: in the dot11_auth_dot1x_start
Dec 7 13:56:09.373: dot11_auth_dot1x_send_id_req_to_client:
    sending identity request for 0040.96a0.3758
Dec 7 13:56:09.374: dot11_auth_dot1x_send_id_req_to_client:
    Started timer client_timeout 30 seconds
Dec 7 13:56:39.358: dot11_auth_dot1x_run_rfsm:
    Executing Action(CLIENT_WAIT,TIMEOUT) for 0040.96a0.3758
Dec 7 13:56:39.358: dot11_auth_dot1x_send_client_fail:
    Authentication failed for 0040.96a0.3758
Dec 7 13:56:39.358: %DOT11-7-AUTH_FAILED:
    Station 0040.96a0.3758 Authentication failed

```

A client reports being unable to log into the wireless network, which uses PEAPv2. Which two issues appear in the output? (Choose two)

- A. The AP has the incorrect RADIUS server address
- B. There is a problem with the client supplicant
- C. The AP has lost IP connectivity to the authentication server
- D. The authentic at ion server is misconfigured on the controller
- E. The EAP client timeout value should be increased
- F. The authentication server is misconfigured in the WLAN

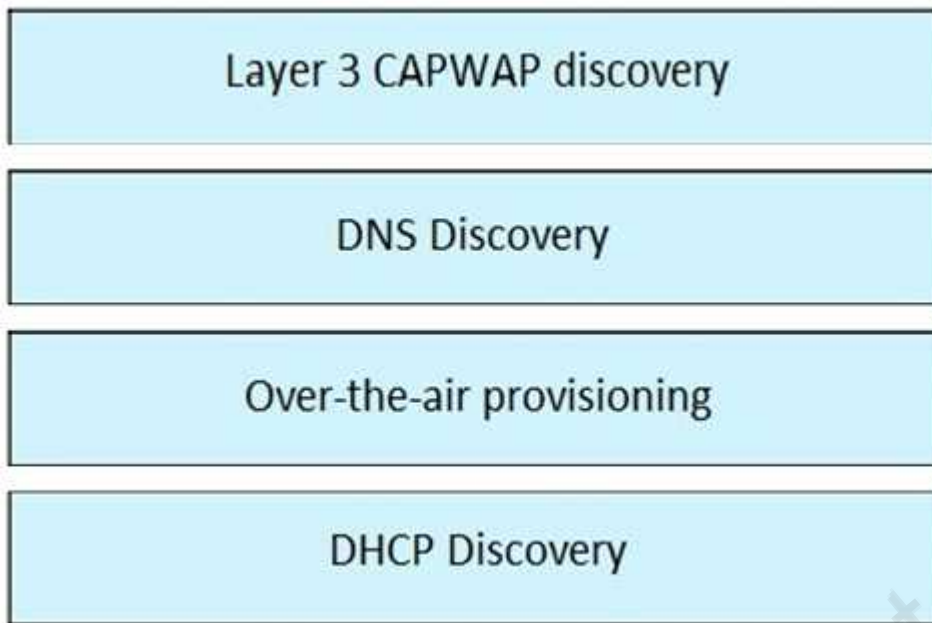
Answer: B, E

Question: 3

Drag and drop the discovery type on the left onto its discovery method on the right.

DNS Discovery	Neighbor messages
Layer 3 CAPWAP discovery	CISCO-CAPWAP-CONTROLLER.localdomain
DHCP Discovery	IP address and UDP
Over-the-air provisioning	Option 43

Answer:



Question: 4

While reviewing CleanAir data in Cisco Prime Infrastructure, an engineer notices that a wideband jammer is not sending its Interferer Security Trap correctly. The engineer determines that the default severity level has been changed. Which value does the engineer select to reset the severity level to its factory setting?

- A. informational
- B. major
- C. minor
- D. warning
- E. critical

Answer: E

Question: 5

An engineer is using various techniques to discover and isolate rogues on the network. For which technique must the engineer consider legal ramifications?

- A. rogue AP containment
- B. RF detection
- C. switch port tracing
- D. wire detection
- E. Cisco Prime Infrastructure location services

Answer: A

Question: 6

Which Cisco WLC debug command allows you to determine if the certificate process is failing in the CAPWAP messages?

- A. debug pm pki enable
- B. debug cert events enable
- C. debug capwap events enable
- D. debug capwap packet enable
- E. debug capwap errors enable

Answer: E

Question: 7

Which channel width is the maximum that can be obtained by bonding two 802.11 ac subchannels according to US regulations?

- A. 160 MHz
- B. 120 MHz
- C. 84 MHz
- D. 240 MHz

Answer: A

Explanation:

To increase throughput, 802.11ac introduces two new channel widths. All 802.11ac devices are required to support 80 MHz channels, which doubles the size of the spectral channel over 802.11n. It further adds a 160 MHz channel option for even higher speeds. Due to the limitations of finding contiguous 160 MHz spectrum, the standard allows for a 160 MHz channel to be either a single contiguous block or two noncontiguous 80 MHz channels.

References:

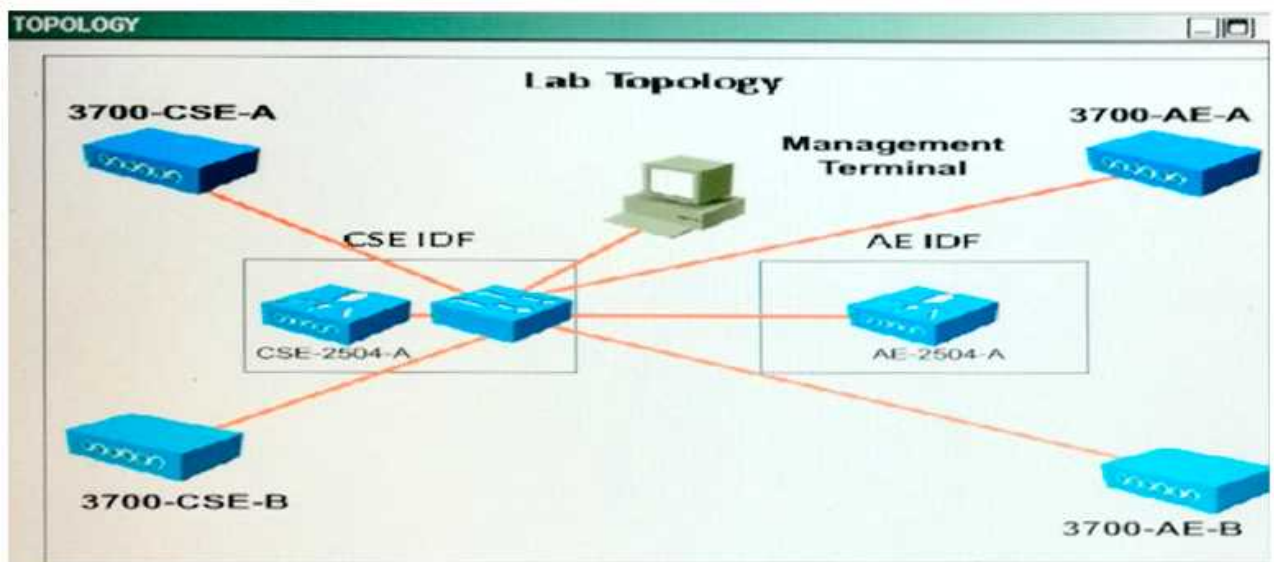
Question: 8

Scenario

The big Engineering IT team has been in the lab to test some new features that the existing network does not support. The AP Groups, AP Failover, and Local Web Auth features are having problems. In this test environment, the controllers support the only Composite Structural Engineering and Aerodynamic Engineering groups. All SSIDs must omit the department name.

Refer to the exhibit. The diagram is the floor plan for the Big Engineering office and the distribution of the departments. These tables show how the controllers have been configured.

Note, not all menu items, text boxes, or radio buttons are active.



BE-GA
 Controller Management Interfaces

Name	IP address	Gateway	DHCP Interface
CSE-2504A	192.168.2.98/24	192.168.2.1	192.168.2.98
AE-2504A	192.168.3.98/24	192.168.3.1	192.168.3.98
HF-2504A	192.168.4.98/24	192.168.4.1	192.168.4.98

Composite and Structural Engineering (CSE)
 WLANs

Profile Name	SSID
CSE-Engineering	CSE-Engineering
CSE-Contractors	CSE-Contractors
CSE-Employees	CSE-Employees

AP Groups-CSE-WLANs

WLANs	APs
CSE-Engineering	3700-CSE-A
CSE-Contractors	3700-CSE-B
CSE-Employees	

AE-User Names and Passwords

User Name	Password
Joan Smith	aetest
Carol Black	aetest

You review the configuration of the test network controller. Which four changes must be made to resolve the problems? (Choose four.)

When you review the configuration of the test network controller what needs to be changed to

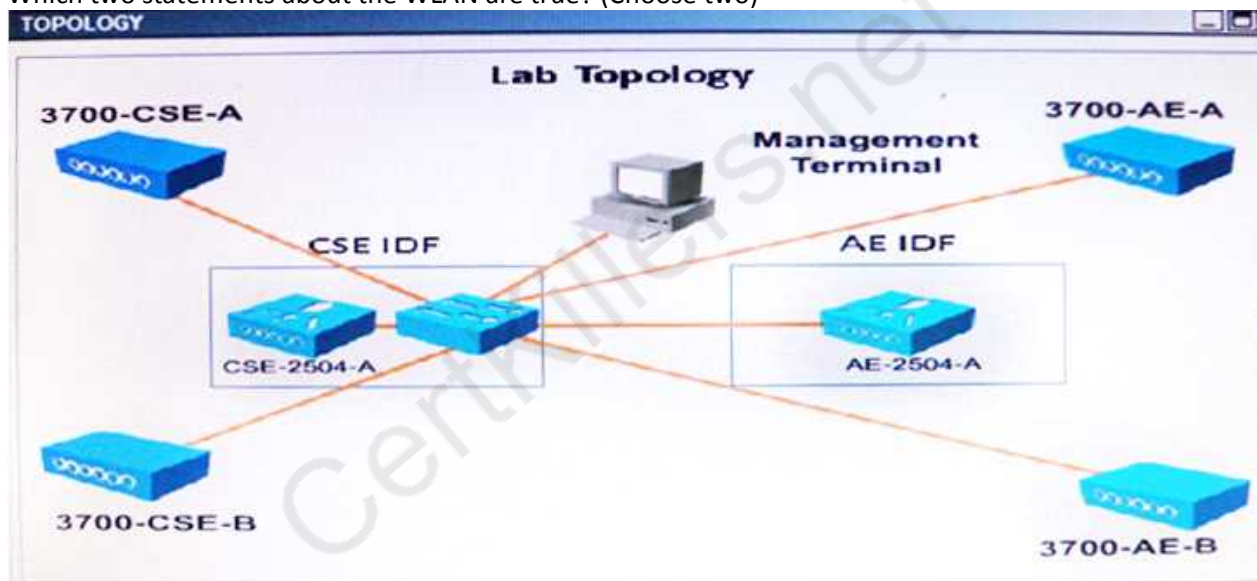
resolve the problems? (Choose four.)

- A. Change the High Availability Primary Controller Management Interface IP address.
- B. Remove the current WLANs and replace them with WLANs that have the same SSID names as on the AE-2504A controller.
- C. Add the Local Net User names and passwords
- D. Change the Layer 2 security to none and Layer 3 Security to Web Policy for the CSE-Contractors WLAN
- E. Remove the current WLAN from the CSE-WLAN AP Group and add all three of the WLANs configured in the CSE-2504A
- F. Add the CSE APs to the CSE-WLANs AP-Group.

Answer: B, C, D, F

Question: 9

Which two statements about the WLAN are true? (Choose two)



Refer to the exhibit.

Packet	Source	Destination	Channel	Data Rate	Size	Protocol
3377	Intel:2F:D3:70	Cisco:10:44:EF	136	24.0	48	EAP Response
3378	Cisco:10:44:EF	Intel:2F:D3:70	136	24.0	18	802.11 Ack
3379	Cisco:10:44:EF	Intel:2F:D3:70	136	24.0	85	EAP Request
3380	Intel:2F:D3:70	Cisco:10:44:EF	136	6.0	101	EAP Response
3381	Cisco:10:44:EF	Intel:2F:D3:70	136	6.0	18	802.11 Ack
3382	Cisco:10:44:EF	Intel:2F:D3:70	136	24.0	117	EAP Request
3383	Intel:2F:D3:70	Cisco:10:44:EF	136	24.0	149	EAP Response
3384	Cisco:10:44:EF	Intel:2F:D3:70	136	24.0	18	802.11 Ack
3385	Cisco:10:44:EF	Intel:2F:D3:70	136	24.0	133	EAP Request
3386	Intel:2F:D3:70	Cisco:10:44:EF	136	24.0	85	EAP Response
3387	Cisco:10:44:EF	Intel:2F:D3:70	136	24.0	18	802.11 Ack
3388	Intel:2F:D3:70	Cisco:10:44:EF	136	24.0	85	EAP Response
3389	Cisco:10:44:EF	Intel:2F:D3:70	136	24.0	18	802.11 Ack
3390	Cisco:10:44:EF	Intel:2F:D3:70	136	24.0	46	EAP Success
3391	Cisco:10:44:EF	Intel:2F:D3:70	136	24.0	159	EAPOL-Key
3392	Intel:2F:D3:70	Cisco:10:44:EF	136	24.0	161	EAPOL-Key
3393	Cisco:10:44:EF	Intel:2F:D3:70	136	24.0	18	802.11 Ack
3394	Cisco:10:44:EF	Intel:2F:D3:70	136	24.0	193	EAPOL-Key
3395	Intel:2F:D3:70	Cisco:10:44:EF	136	24.0	137	EAPOL-Key
3396	Cisco:10:44:EF	Intel:2F:D3:70	136	24.0	18	802.11 Ack
3397	Cisco:10:44:EF	Intel:2F:D3:70	136	24.0	24	802.11 RTS
3398	Cisco:10:44:EF	Intel:2F:D3:70	136	2.0	108	802.11 Encrypted Data
3399	Cisco:10:44:EF	Intel:2F:D3:70	136	24.0	24	802.11 RTS
3400	Cisco:10:44:EF	Intel:2F:D3:70	136	2.0	108	802.11 Encrypted Data

- A. The client has a 5 GHz connection.
- B. The client has authenticated.
- C. The client is 802.11n capable.
- D. The Cisco device is a 3600 series AP.
- E. 802.11b data rates are disabled in this WLAN

Answer: A, B

Question: 10

The AP is unable to join the controller. What is the cause of this error?
Refer to the exhibit.

```

Thu Aug 1 16:23:27 2013 AP with MAC bb:1f:11:1f:1d:3f (APbb1f.111f.1d3f) is unknown.
Thu Aug 1 16:23:27 2013 AP Associated. Base Radio MAC: bb:1f:11:1f:1d:3f
Thu Aug 1 16:23:13 2013 AP Disassociated. Base Radio MAC:bb:1f:11:1f:1d:3f
Thu Aug 1 16:23:16 2013 AP with MAC bb:1f:11:1f:1d:3f (APbb1f.111f.1d3f) is unknown.
Thu Aug 1 16:23:16 2013 AP Associated. Base Radio MAC: bb:1f:11:1f:1d:3f
Thu Aug 1 16:23:08 2013 AP Disassociated. Base Radio MAC:bb:1f:11:1f:1d:3f
Thu Aug 1 16:23:04 2013 AP with MAC bb:1f:11:1f:1d:3f (APbb1f.111f.1d3f) is unknown.
    
```

- A. The controller code version is lower than the code of the AP attempting to join.
- B. AP code is not the same as the controller and must download firmware.
- C. AP model \% not compatible with the controller code version.
- D. The AP is riot conjured in the controller auth-list of acceptable APs.

Answer: C

CertKillers.net

Thank You for trying 300-370 PDF Demo

To Buy Latest 300-370 Full Version Download visit link below

<https://www.certkillers.net/Exam/300-370>

Start Your 300-370 Preparation

[Limited Time Offer] Use Coupon “CKNET” for Further discount on your purchase. Test your 300-370 preparation with actual exam questions.

<https://www.certkillers.net>