



# Oracle

1Z0-546 Exam

**StorageTek Tape Libraries Essentials**

Thank you for Downloading 1Z0-546 exam PDF Demo

You can Buy Latest 1Z0-546 Full Version Download

<https://www.certkillers.net/Exam/1Z0-546>

<https://www.certkillers.net>

---

**Question: 1**

---

Which of the items are reports available from SLC regarding partitioning on an SL500?

- A. Cartridge Cell and Media Summary
- B. Host Connections Summary
- C. Orphaned Cartridge Report
- D. Partition Summary
- E. Partition Details
- F. All of the above

---

**Answer: F**

---

Explanation:

Partitions—Reports include:

Partitions—Reports—Cartridge Cell and Media Summary

Partitions—Reports—Host Connections Summary

Partitions—Reports—Orphaned Cartridge Report

Partitions—Reports—Partition Details

Partitions—Reports—Partition Summary

Reference:

StorageTek SL500 Modular Library System, Partition Report Screens

---

**Question: 2**

---

What ACSLS command would change a cap priority?

- A. set cap priority 5 0, 0, 1
- B. define cap priority 5 0, 0, 1
- C. change cap priority 5 0, 0, 1
- D. lock cap priority 5 0, 0, 1

---

**Answer: A**

---

Explanation:

A: The set cap priority command sets a CAP's automatic selection priority.

Format set cap priority cap\_priority cap\_id

Reference:

StorageTek ACSLS, Automated Cartridge System Library Software , set cap priority

---

**Question: 3**

---

Using ACSLS, how would you delete a tape pool?

- A. Set scr off and delete the pool
- B. Remove all data tapes and delete the pool

- C. Delete pool 0 and all empty pools will delete automatically
- D. Remove all volumes from the pool and then delete it

---

**Answer: A**

---

Explanation:

Use the delete pool command to delete empty scratch pools. If a pool contains scratch cartridges, you must reassign these cartridges to another pool before deleting the first pool. If a scratch cartridge is mounted, it becomes a data cartridge but remains in its scratch pool. Use the set scratch off command to reassign the data cartridge to the common pool.

Incorrect answers:

D: The delete pool command deletes empty scratch pools.

Formats delete pool pool\_id... |all Options pool\_id specifies the pool ID.

Pool 0 is the common pool, which you cannot delete.

Reference:

StorageTek ACSLS, Automated Cartridge System Library Software , delete pool

---

#### Question: 4

---

Which connectivity option is available only in an SL8500 library complex?

- A. single TCP/IP connectivity
- B. dual TCP/IP connectivity
- C. multi TCP/IP connectivity

---

**Answer: B**

---

Explanation:

The SL8500 library uses TCP/IP protocol over an Ethernet physical interface to manage and communicate with the library. This interface enables both enterprise-level (HSC) and open system platforms (ACSL) to connect to and communicate with the SL8500.

There are two separate Ethernet connections on the HBC card for host to library communications—Ports 2A and 2B.

\* Port 2A provides the Dual TCP/IP host connection—this is an optional feature for SL8500 libraries..

\* Port 2B provides the primary connection for host communications—this is the standard connection for SL8500 libraries.

Reference:

StorageTek StreamLine SL8500, modular library system, Host Interfaces

---

#### Question: 5

---

Where are the messages written when a pool gets below the low water mark?

- A. acsss\_event.log
- B. pool\_error.log
- C. hardware\_event.log
- D. Doesn't write an error message

---

**Answer: A**

---

Explanation:

low\_water\_mark is the low volume warning threshold. If the scratch cartridge count falls below this threshold, ACSLS logs a warning message in the event log.

Valid values are 0 to 231-1. The default is 0.

Note: The ACSLS event log is the first stop for useful information in the event of problems with your library operation. This log contains information about library events, status changes, and errors. All sub-components within ACSLS will report events to the acsss\_event.log by sending messages to a process called the event logger. The standard event log, which is automatically created when ACSLS is installed, is contained in the file \$ACS\_HOME/log/acsss\_event.log and where \$ACS\_HOME is usually /export/home/ACSSS/.

Reference:

StorageTek ACSLS, Automated Cartridge System Library Software , define pool

---

**Question: 6**

---

On the SL8500, which is the best option when combining workloads that span more than one rail?

- A. using the middle two rails for active enters and ejects
- B. using rails that are adjacent to each other within the same SL8500
- C. using the top rail for extra archival space and any other rail for active data
- D. using the top rail for active enters and ejects and any other rail for archival space

---

**Answer: C**

---

Explanation:

If you are not able to assign workloads to a single rail, consider:

- \* Using rails that are adjacent to each other. This provides a shorter distance for the pass-thru operation.
- \* Combining rails vertically rather than horizontally

Reference:

StorageTek SL8500 Modular Library System, Best Practises, Dedicating Rails

---

**Question: 7**

---

The System Detail SLC screen displays health indicators for which four devices in an SL3000?

- A. Rotational and AFM CAPs
- B. Drives
- C. Media
- D. Power supplies
- E. Robot(s)

---

**Answer: A, B, D, E**

---

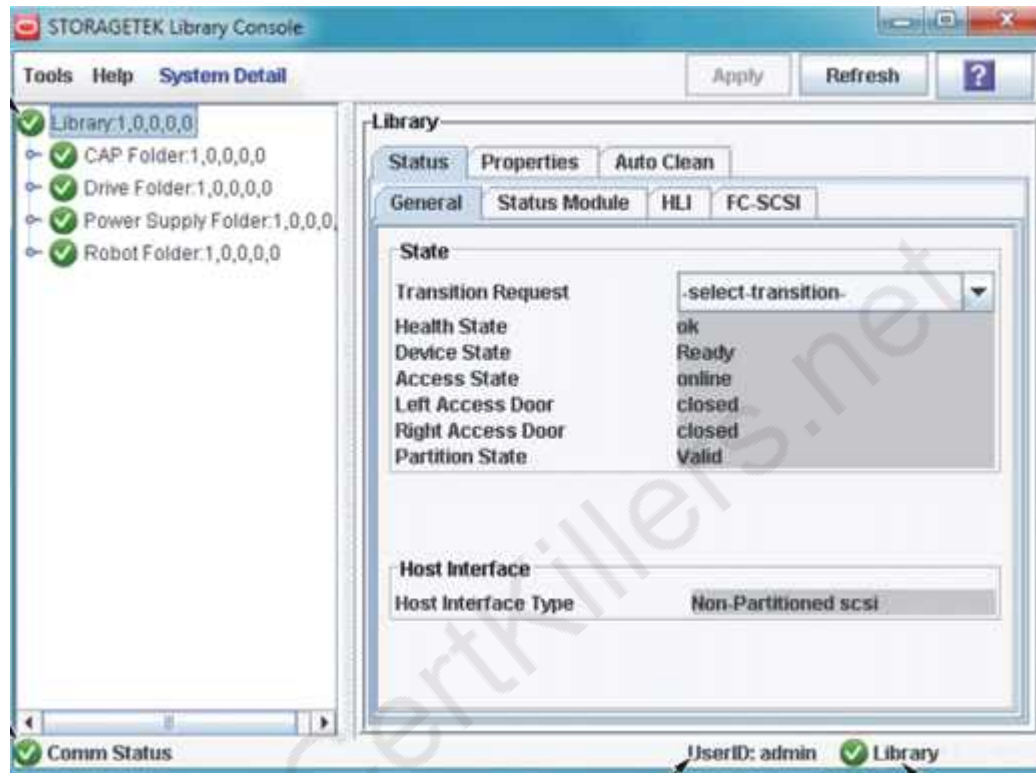
Explanation:

The SL Console screen displays health indicators for each of the following devices:

- \* Library
- \* Rotational and AEM CAPs (A)
- \* Drives (B)
- \* Power supplies (D)
- \* Robot(s) (E)
- \* AEM safety doors

Please reference the figure below.

FIGURE 6-1 SL Console Health Status Indicators



Reference:

StorageTek SL3000 Modular Library System, User's Guide , Library and Device Status

## Thank You for trying 1Z0-546 PDF Demo

To Buy Latest 1Z0-546 Full Version Download visit link below

<https://www.certkillers.net/Exam/1Z0-546>

## Start Your 1Z0-546 Preparation

**[Limited Time Offer]** Use Coupon “CKNET” for Further discount on your purchase. Test your 1Z0-546 preparation with actual exam questions.

<https://www.certkillers.net>