



# Citrix

## 1Y0-301 Exam

### Deploying Citrix XenDesktop 7.6 Solutions

Thank you for Downloading 1Y0-301 exam PDF Demo

You can Buy Latest 1Y0-301 Full Version Download

<https://www.certkillers.net/Exam/1Y0-301>

<https://www.certkillers.net>

## Version: 9.0

### Question: 1

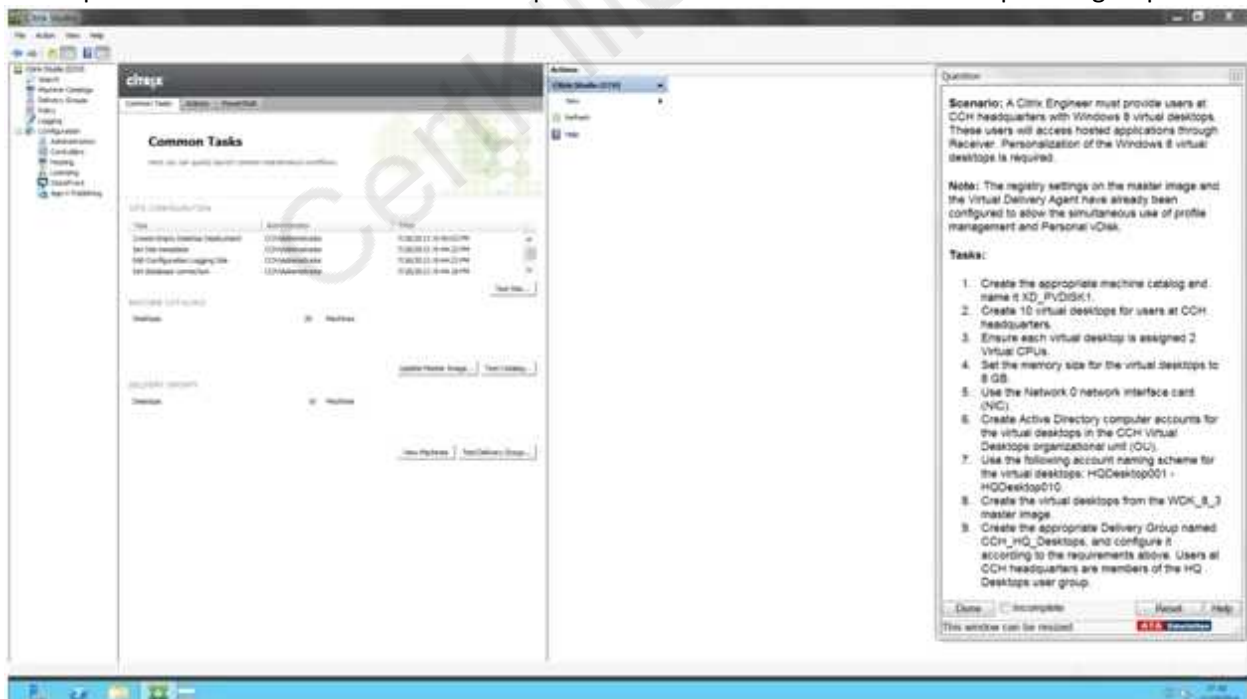
#### SIMULATION

Scenario: A Citrix Engineer must provide users at CCH headquarters with Windows 8 virtual desktops. These users will access hosted applications through Receiver. Personalization of the Windows 8 virtual desktops is required.

Note: The registry settings on the master image and the Virtual Delivery Agent have already been configured to allow the simultaneous use of profile management and Personal vDisk.

#### Tasks:

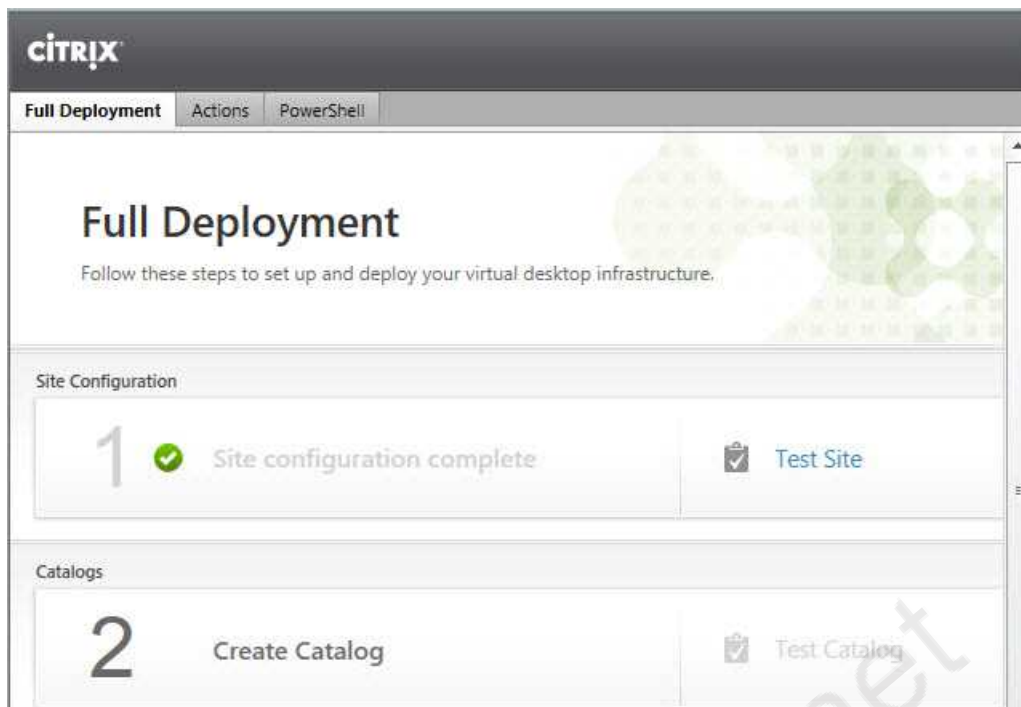
1. Create the appropriate machine catalog and name it XD\_PVDISK1.
2. Create 10 virtual desktops for users at CCH headquarters.
3. Ensure each virtual desktop is assigned 2 Virtual CPUs.
4. Set the memory size for the virtual desktops to 8 GB.
5. Use the Network 0 network interface card (NIC).
6. Create Active Directory computer accounts for the virtual desktops in the CCH Virtual Desktops organizational unit(OU).
7. Use the following account naming scheme for the virtual desktops: HQDesktop001 – HQDesktop010.
8. Create the virtual desktops from the WDK\_8\_3 master image.
9. Create the appropriate Delivery Group named CCH\_HQ\_Desktops, and configure it according to the requirements above. Users at CCH headquarters are members of the HQ Desktops user group.



### Answer:

XenDesktop 7 Machine Catalog

1. In Desktop Studio we want to create a VM catalog,



The screenshot shows the Citrix Full Deployment wizard. At the top, there is a navigation bar with 'Full Deployment', 'Actions', and 'PowerShell' tabs. Below the navigation bar, the main heading is 'Full Deployment' with a sub-heading 'Follow these steps to set up and deploy your virtual desktop infrastructure.' The wizard is divided into two main sections: 'Site Configuration' and 'Catalogs'. In the 'Site Configuration' section, step 1 is 'Site configuration complete' with a green checkmark icon and a 'Test Site' button. In the 'Catalogs' section, step 2 is 'Create Catalog' with a 'Test Catalog' button.

## 2. Choose the OS type Operating System and Hardware

We want to help you create the correct type of Machine Catalog by asking a few questions to provide a recommendation

[Learn more](#)

Select an operating system and machine type for this Machine Catalog.

- Windows Desktop OS  
The Desktop OS Machine Catalog provides VDI desktops ideal for a variety of different users.
- Windows Server OS  
The Server OS Machine Catalog provides hosted shared desktops for a large-scale deployment of standardized machines.
- Remote PC Access  
The Remote PC Access Machine Catalog provides users with remote access to their physical office desktops, allowing them to work at any time.

## 3. We will be using VMs and Citrix Machine Creation Services, so the defaults are fine.

### Machine Management

As part of creating a Machine Catalog, the way you plan to provision machines influences the recommended Machine Catalog type.

[Learn more](#)

This infrastructure will be built using:

- Virtual machines
- Physical hardware

Desktop images are managed using:

- Machine Creation Services (MCS)
- Provisioning Services (PVS)
- Another service or technology  
I will manage my desktop images with something other than Citrix technology. I have existing Master Images already prepared.

### 4. Use the default

#### Desktop Experience

Consider the tasks your users perform and then decide which desktop experience would be best.

Which desktop experience do you want users to have?

- I want users to connect to a new (random) desktop each time they log on.
- I want users to connect to the same (static) desktop each time they log on.

Do you want to save any changes that the user makes to the desktop?

- Yes, save changes on a separate Personal vDisk.
- Yes, create a dedicated virtual machine and save changes on the local disk.
- No, discard all changes and clear virtual desktops when the user logs off.  
If configured, folder redirection will not be affected.

### 5. Choose the master image

#### WDK\_8\_3 master image.

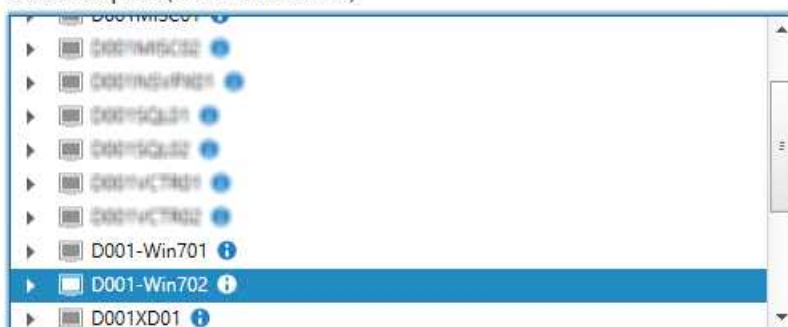
#### Master Image

Select a Host and corresponding Virtual Machine or snapshot from the list to create a Master Image.

Select a Resource:

VDI

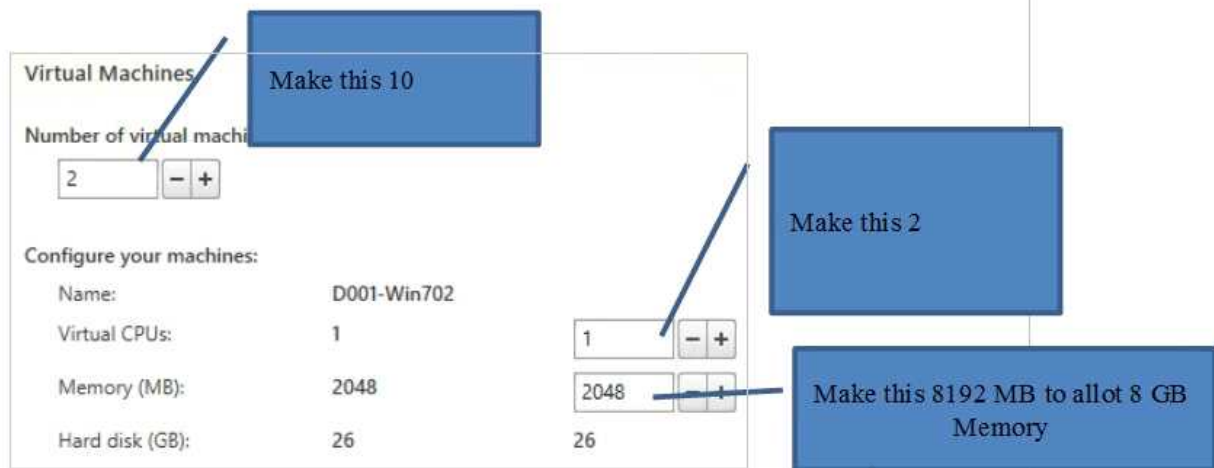
Select a snapshot (or a Virtual Machine):



The Master Image is built using Windows XP or Windows Vista

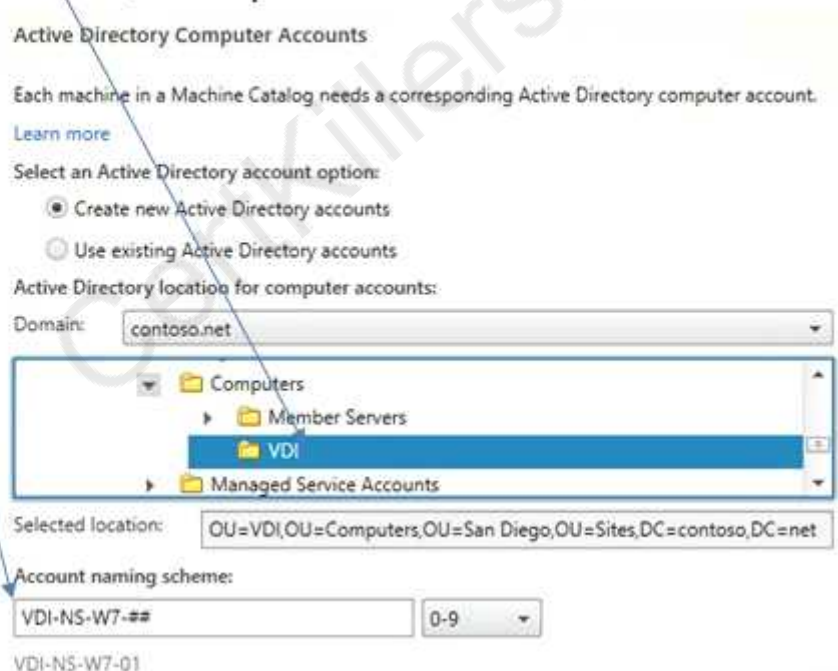
You should also select this option if the snapshot or Master Image is running Windows 7 with VDA 5.6

6. A great feature of XenDesktop is the ability to customize the catalog hardware at provisioning time, so you can offer different tiers of VMs from the exact same master image. No need to build up templates with the same OS and software stack, just to customize the vCPUs and memory specs.



7. OU –  
CCH Virtual Desktops

Machine Names –  
HQDesktop001 - HQDesktop010



8. On the summary screen you need to give the catalog a name and a description.

**Summary**

Machine type:	Windows Desktop OS
Machine management:	Virtual
Provisioning method:	Machine creation services (MCS)
Desktop experience:	Users connect to a new desktop each time they log on
Resources:	VDI
Master Image name:	D001-Win702 <small>A snapshot of the Master Image VM will be created</small>
Number of VMs to create:	2
Virtual CPUs:	1

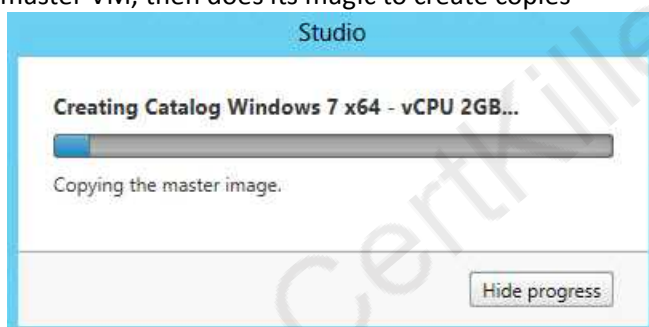
Machine Catalog name:  
Windows 7 x64 - 1 vCPU 2GB

Machine Catalog description for administrators: (Optional)  
General purpose Windows 7 x64 VMs

**Note:** To complete the deployment, assign this machine catalog to a Delivery Group by selecting Delivery Groups and then Create or Edit a Delivery Group.

**Change this per the Simulation to XD\_PVDISK1**

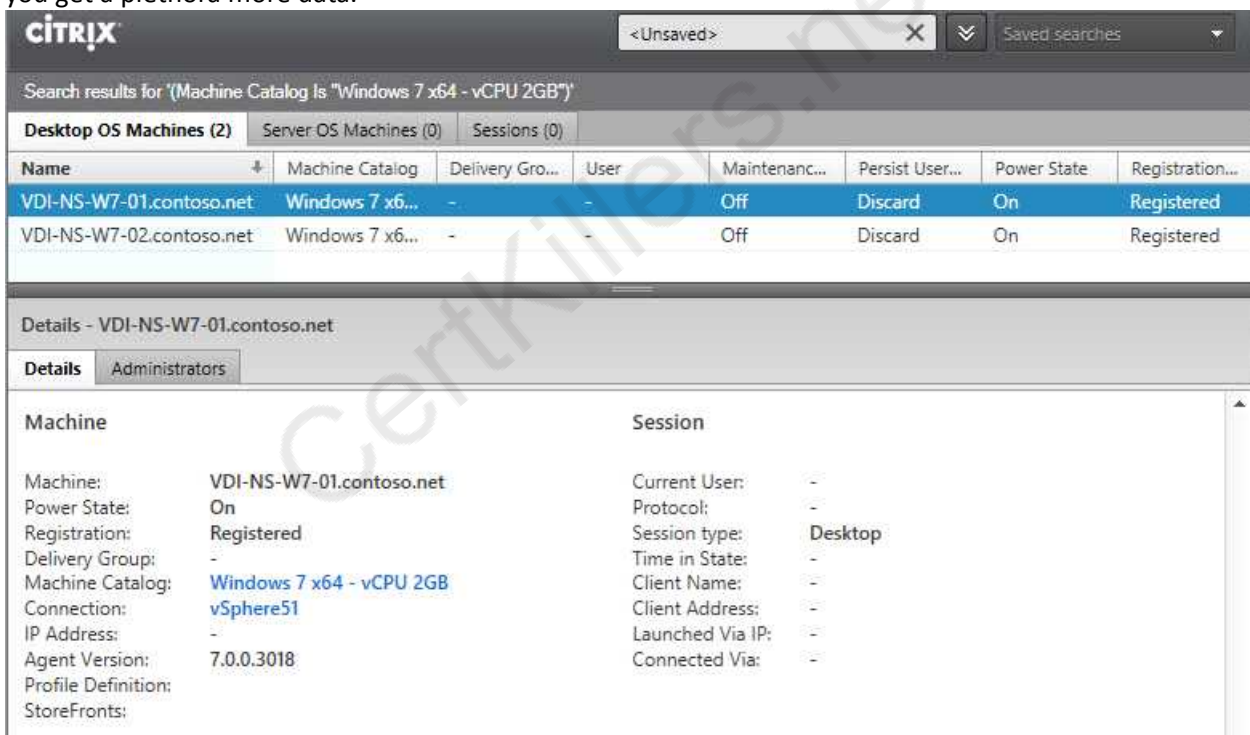
9. After you kick off the provisioning process you get a nice status. MCS first makes a copy of your master VM, then does its magic to create copies



10. When the provisioning is completed you now have one machine catalog entry



11. If you double click on the machine catalog it will bring up a search window with the individual VMs listed. You can now power them on and wait for them to show a “registered” status. If you click on an individual VM it will pull up even more details. If a user had an active session to the VM then you get a plethora more data.



As you can see, creating a machine catalog from a master template is quick and easy. Within Desktop Studio you can view a tremendous amount of detail about the catalog and individual VMs.

## Question: 2

### SIMULATION

Scenario: A Citrix Engineer at CCH needs to provide owners of a specific application with delegated administrative rights to perform specific tasks on their application and the servers hosting their

application.

The application owners need permissions to do the following:

Add and remove the application from a Delivery Group

Create and delete applications

Edit application properties

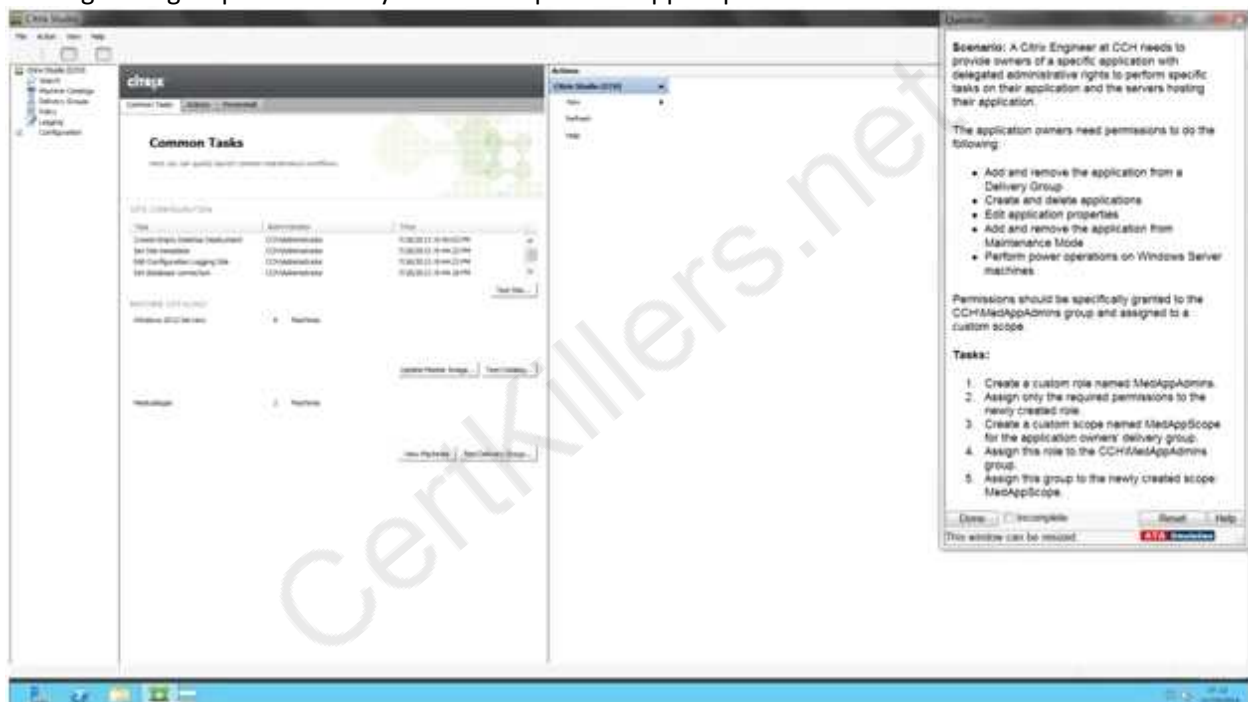
Add and remove the application from Maintenance Mode

Perform power operations on Windows Server machines

Permissions should be specifically granted to the CCH\MedAppAdmins group and assigned to a custom scope.

Tasks:

1. Create a custom role named MedAppAdmins.
2. Assign only the required permissions to the newly created role.
3. Create a custom scope named MedAppScope for the application owners' delivery group.
4. Assign this role to the CCH\MedAppAdmins group.
5. Assign this group to the newly created scope: MedAppScope.



**Answer: Find the solution with all steps below.**

Explanation:

To create a custom role

1. In Studio, click Configuration > Administrators in the left pane, then click the Roles tab in the middle pane. A list of existing roles appears.
2. In the Actions pane, click Create new Role.
3. Type a name and description for the role.
4. For each object type that you want this role to have permissions for, select the object type, then select the permissions.



- Add and remove the application from a Delivery Group
- Create and delete applications
- Edit application properties
- Add and remove the application from Maintenance Mode
- Perform power operations on Windows Server machines

1. Click Save.

To create a scope

1. In Studio, click Configuration > Administrators in the left pane, then click the Scopes tab in the middle pane. A list of existing scopes appears.
2. In the Actions pane, click Create new Scope.
3. Type a name (for example, 'Sales') and a description (for example, 'Delivery Groups used by Sales') for the scope.
4. Select object types or specific objects:
  - a. To select all objects of a particular type (for example, Delivery Groups), select the object type.
  - b. To select specific objects, expand the type, then select the individual objects (for example, individual Delivery Groups used by the Sales team).
5. Click Save.

---

**Question: 3**

---

What is required by NetScaler Gateway when enabling remote access in a XenDesktop deployment?

- A. An LDAP bind account
- B. A connection URL to the hypervisor
- C. A root certificate from the internal CA
- D. The IP address of the RDS License Server

---

**Answer: A**

---

---

**Question: 4**

---

Scenario: A Citrix Engineer needs to enable Active Directory Machine Account Password Management in a XenDesktop environment where Provisioning Services is used. The target devices belong to the same Active Directory domain and are assigned a vDisk in Standard mode.

Which three Active Directory permissions are required to enable Active Directory Machine Account Password Management in this environment? (Choose three.)

- A. Move
- B. Reset
- C. Delete
- D. Create
- E. Rename

---

**Answer: B, C, D**

---

---

**Question: 5**

---

Which two other database server permissions are required in a Provisioning Services farm in addition to 'execute permissions on the stored procedures'? (Choose two.)

- A. db\_owner
- B. db\_datawriter
- C. db\_datareader
- D. db\_accessadmin
- E. db\_securityadmin

---

**Answer: B, C**

---

---

**Question: 6**

---

A Citrix Engineer could use \_\_\_\_\_ to enable high availability for XenDesktop site databases. (Choose the correct option to complete the sentence.)

- A. SQL Server 2008 SP2 Cluster
- B. SQL Server 2012 SP1 Express
- C. SQL Server 2012 SP1 with Replication
- D. SQL Server 2008 R2 SP2 with Mirroring

---

**Answer: D**

---

---

**Question: 7**

---

A Citrix Engineer must configure a service account for communication between the Delivery Controller and Microsoft Virtual Machine Manager. Which two permissions are required to ensure that the account has the rights to provision virtual desktops onto the shared storage? (Choose two.)

- A. Local Administrator on each Hyper-V host
- B. Administrator on the Virtual Machine Manager
- C. Local Administrator on the Delivery Controller
- D. Fabric Administrator on the Virtual Machine Manager

---

**Answer: A, B**

---

---

**Question: 8**

---

Scenario: After using evaluation licensing to explore XenDesktop, a Citrix Engineer installs valid Enterprise licenses on the Citrix License Server. The engineer confirms that the licenses show correctly in the license console. A few weeks later, users in the environment report that they are receiving an error message when logging into Desktop OS machines that states the evaluation license is about to expire.

What should the engineer do to correct this issue?

- A. Select the correct product edition in Citrix Studio.
- B. Delete the evaluation license and restart the License service.
- C. Reallocate the production license with the FQDN of the License Server.
- D. Reinstall the production licenses on the License Server and restart the License service.

---

**Answer: A**

---

---

**Question: 9**

---

Which two ports should be used for communication between the Virtual Delivery Agent and the Delivery Controllers? (Choose two.)

- A. 80
- B. 443
- C. 636
- D. 1494
- E. 2598

---

**Answer: A, B**

---

---

**Question: 10**

---

Which set of components and services are specific to the FlexCast Management Architecture (FMA)?

- A. Citrix Studio, site database, Data Collector, Citrix Director
- B. StoreFront, Delivery Controller, Citrix Studio, SQL High Availability
- C. Virtual Delivery Agent, Delivery Controller, site database, Citrix Director
- D. Local Host Cache, Citrix Studio, Delivery Controller, Virtual Delivery Agent

---

**Answer: C**

---

## Thank You for trying 1Y0-301 PDF Demo

To Buy Latest 1Y0-301 Full Version Download visit link below

<https://www.certkillers.net/Exam/1Y0-301>

## Start Your 1Y0-301 Preparation

**[Limited Time Offer]** Use Coupon “CKNET” for Further discount on your purchase. Test your 1Y0-301 preparation with actual exam questions.

<https://www.certkillers.net>