



# Check Point

156-215.80 Exam

**Check Point Certified Security Administrator R80 Exam**

Thank you for Downloading 156-215.80 exam PDF Demo

You can Buy Latest 156-215.80 Full Version Download

<https://www.certkillers.net/Exam/156-215.80>

<https://www.certkillers.net>

# Version: 24.0

## Question: 1

Which of the following is NOT an integral part of VPN communication within a network?

- A. VPN key
- B. VPN community
- C. VPN trust entities
- D. VPN domain

**Answer: A**

## Question: 2

Two administrators Dave and Jon both manage R80 Management as administrators for ABC Corp. Jon logged into the R80 Management and then shortly after Dave logged in to the same server. They are both in the Security Policies view. From the screenshots below, why does Dave not have the rule no.6 in his SmartConsole view even though Jon has it in his SmartConsole view?

No.	Name	Source	Destination	VPN	Services & Applications	Action	Track	Install On
1	NetBIOS Noise	* Any	* Any	* Any	NBT	Drop	- None	* Policy Targets
2	Management	Net_10.28.0.0	GW-R7730	* Any	https ssh	Accept	Log	* Policy Targets
3	Stealth	* Any	GW-R7730	* Any	* Any	Drop	Log	* Policy Targets
4	DNS	Net_10.28.0.0	* Any	* Any	* Any	Accept	- None	* Policy Targets
5	Web	Net_10.28.0.0	* Any	* Any	http https	Accept	Log	* Policy Targets
6	DMZ Access	Net_10.28.0.0	DMZ_Net_192.0.2.0	* Any	ftp	Accept	- None	* Policy Targets
7	Cleanup rule	* Any	* Any	* Any	* Any	Drop	Log	* Policy Targets

No.	Name	Source	Destination	VPN	Services & Applications	Action	Track	Install On
1	NetBIOS Noise	* Any	* Any	* Any	NBT	Drop	- None	* Policy Targets
2	Management	Net_10.28.0.0	GW-R7730	* Any	https ssh	Accept	Log	* Policy Targets
3	Stealth	* Any	GW-R7730	* Any	* Any	Drop	Log	* Policy Targets
4	DNS	Net_10.28.0.0	* Any	* Any	* Any	Accept	- None	* Policy Targets
5	Web	Net_10.28.0.0	* Any	* Any	http https	Accept	Log	* Policy Targets
6	Cleanup rule	* Any	* Any	* Any	* Any	Drop	Log	* Policy Targets

A. Jon is currently editing rule no.6 but has Published part of his changes.

- B. Dave is currently editing rule no.6 and has marked this rule for deletion.
- C. Dave is currently editing rule no.6 and has deleted it from his Rule Base.
- D. Jon is currently editing rule no.6 but has not yet Published his changes.

---

**Answer: D**

---

Explanation:

When an administrator logs in to the Security Management Server through SmartConsole, a new editing session starts. The changes that the administrator makes during the session are only available to that administrator. Other administrators see a lock icon on object and rules that are being edited. To make changes available to all administrators, and to unlock the objects and rules that are being edited, the administrator must publish the session.

---

**Question: 3**

---

Vanessa is firewall administrator in her company; her company is using Check Point firewalls on central and remote locations, which are managed centrally by R80 Security Management Server. One central location has an installed R77.30 Gateway on Open server. Remote location is using Check Point UTM-1 570 series appliance with R71. Which encryption is used in Secure Internal Communication (SIC) between central management and firewall on each location?

- A. On central firewall AES128 encryption is used for SIC, on Remote firewall 3DES encryption is used for SIC.
- B. On both firewalls, the same encryption is used for SIC. This is AES-GCM-256.
- C. The Firewall Administrator can choose which encryption suite will be used by SIC.
- D. On central firewall AES256 encryption is used for SIC, on Remote firewall AES128 encryption is used for SIC.

---

**Answer: A**

---

Explanation:

Gateways above R71 use AES128 for SIC. If one of the gateways is R71 or below, the gateways use 3DES.

---

**Question: 4**

---

Review the following screenshot and select the BEST answer.



- A. Data Center Layer is an inline layer in the Access Control Policy.
- B. By default all layers are shared with all policies.
- C. If a connection is dropped in Network Layer, it will not be matched against the rules in Data Center Layer.
- D. If a connection is accepted in Network-layer, it will not be matched against the rules in Data Center Layer.

---

**Answer: C**

---

---

**Question: 5**

---

Which of the following is NOT a SecureXL traffic flow?

- A. Medium Path
- B. Accelerated Path
- C. Fast Path
- D. Slow Path

---

**Answer: C**

---

Explanation:

SecureXL is an acceleration solution that maximizes performance of the Firewall and does not compromise security. When SecureXL is enabled on a Security Gateway, some CPU intensive operations are processed by virtualized software instead of the Firewall kernel. The Firewall can inspect and process connections more efficiently and accelerate throughput and connection rates. These are the SecureXL traffic flows:

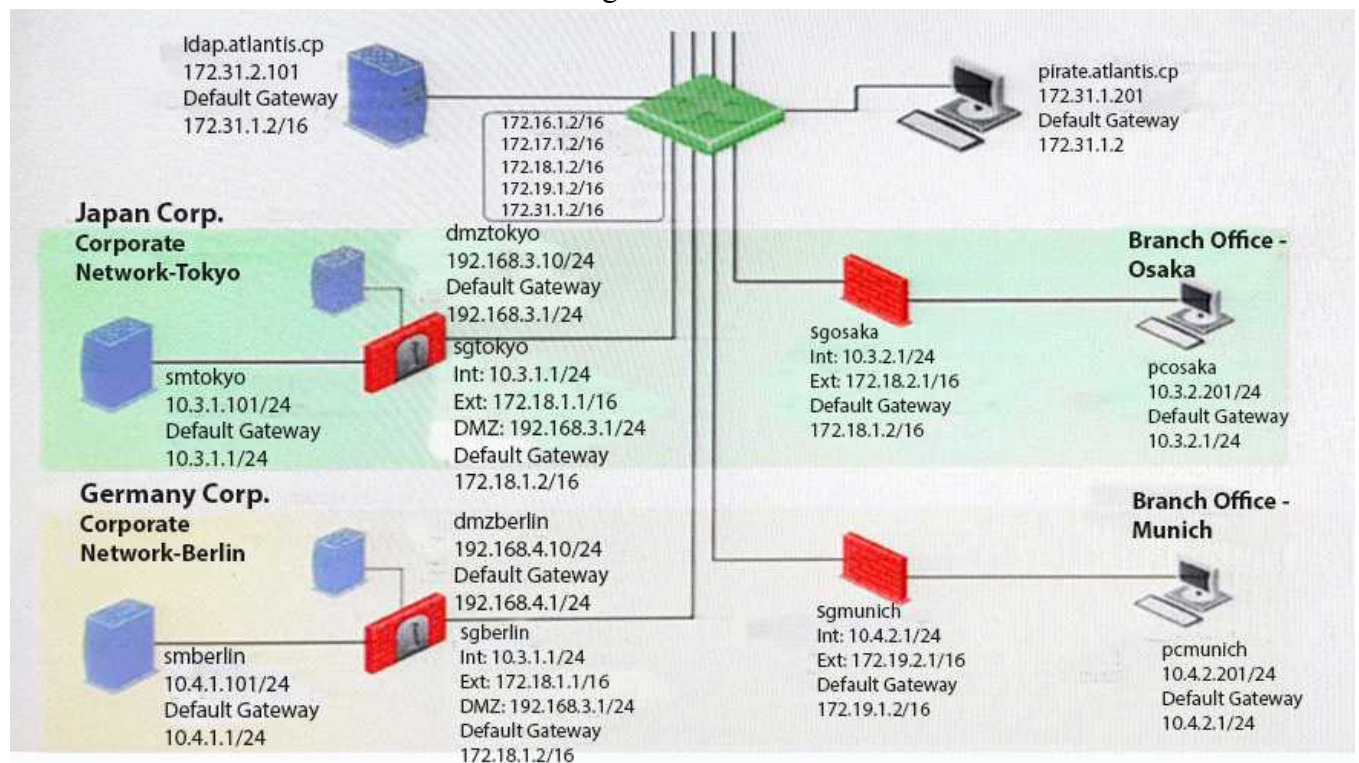
Slow path - Packets and connections that are inspected by the Firewall and are not processed by SecureXL.

Accelerated path - Packets and connections that are offloaded to SecureXL and are not processed by the Firewall.

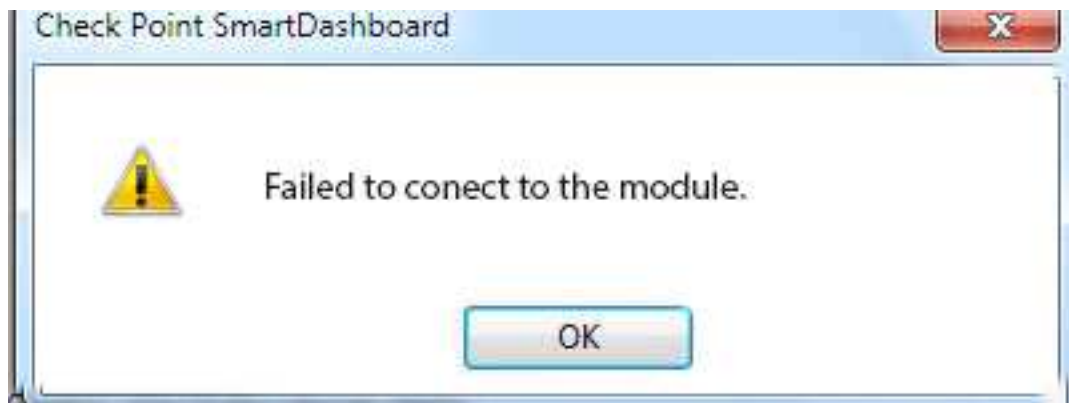
Medium path - Packets that require deeper inspection cannot use the accelerated path. It is not necessary for the Firewall to inspect these packets, they can be offloaded and do not use the slow path. For example, packets that are inspected by IPS cannot use the accelerated path and can be offloaded to the IPS PSL (Passive Streaming Library). SecureXL processes these packets more quickly than packets on the slow path.

**Question: 6**

You want to reset SIC between smberlin and sgosaka.



In SmartDashboard, you choose sgosaka, Communication, Reset. On sgosaka, you start cpconfig, choose Secure Internal Communication and enter the new SIC Activation Key. The screen reads The SIC was successfully initialized and jumps back to the menu. When trying to establish a connection, instead of a working connection, you receive this error message:



What is the reason for this behavior?

- A. The Gateway was not rebooted, which is necessary to change the SIC key.
- B. You must first initialize the Gateway object in SmartDashboard (i.e., right-click on the object, choose Basic Setup > Initialize).
- C. The Check Point services on the Gateway were not restarted because you are still in the cpconfig utility.
- D. The activation key contains letters that are on different keys on localized keyboards. Therefore, the activation can not be typed in a matching fashion.

---

**Answer: C**

---

---

**Question: 7**

---

VPN gateways authenticate using \_\_\_\_\_ and \_\_\_\_\_ .

- A. Passwords; tokens
- B. Certificates; pre-shared secrets
- C. Certificates; passwords
- D. Tokens; pre-shared secrets

---

**Answer: B**

---

Explanation:

VPN gateways authenticate using Digital Certificates and Pre-shared secrets.

---

**Question: 8**

---

In R80 spoofing is defined as a method of:

- A. Disguising an illegal IP address behind an authorized IP address through Port Address Translation.
- B. Hiding your firewall from unauthorized users.
- C. Detecting people using false or wrong authentication logins
- D. Making packets appear as if they come from an authorized IP address.

---

**Answer: D**

---

Explanation:

IP spoofing replaces the untrusted source IP address with a fake, trusted one, to hijack connections to your network. Attackers use IP spoofing to send malware and bots to your protected network, to execute DoS attacks, or to gain unauthorized access.

---

**Question: 9**

---

The \_\_\_\_\_ is used to obtain identification and security information about network users.

- A. User Directory
- B. User server
- C. UserCheck
- D. User index

---

**Answer: A**

---

---

**Question: 10**

---

Which Check Point feature enables application scanning and the detection?

- A. Application Dictionary
- B. AppWiki
- C. Application Library
- D. CPApp

---

**Answer: B**

---

Explanation:

AppWiki Application Classification Library

AppWiki enables application scanning and detection of more than 5,000 distinct applications and over 300,000 Web 2.0 widgets including instant messaging, social networking, video

streaming, VoIP, games and more.



**Thank You for trying 156-215.80 PDF Demo**

To Buy Latest 156-215.80 Full Version Download visit link below

<https://www.certkillers.net/Exam/156-215.80>

**Start Your 156-215.80  
Preparation**

**[Limited Time Offer]** Use Coupon “CKNET” for Further 10% discount on your purchase. Test your 156-215.80 preparation with actual exam questions.

<https://www.certkillers.net>