



# Cisco

## 010-151 Exam

### Cisco Supporting Cisco Datacenter Networking Devices

Thank you for Downloading 010-151 exam PDF Demo

You can Buy Latest 010-151 Full Version Download

<https://www.certkillers.net/Exam/010-151>

<https://www.certkillers.net>

## Version: 9.0

---

**Question: 1**

---

Which method is a TCP/IP-based protocol for establishing and managing connections between IP-based storage devices, hosts, and clients?

- A. FCIP
- B. iFCP
- C. iSCSI
- D. FCoE

---

**Answer: C**

---

---

**Question: 2**

---

Which method does FCIP use to enable connectivity of geographically distributed Fibre Channel SANs over IP?

- A. routing
- B. tunneling
- C. handshaking
- D. transporting

---

**Answer: B**

---

---

**Question: 3**

---

Which important feature on the front end is provided to the clients by multiple servers that access the same storage devices across the SAN?

- A. recovery
- B. redundancy
- C. resiliency
- D. security
- E. storage

---

**Answer: B**

---

**Question: 4**

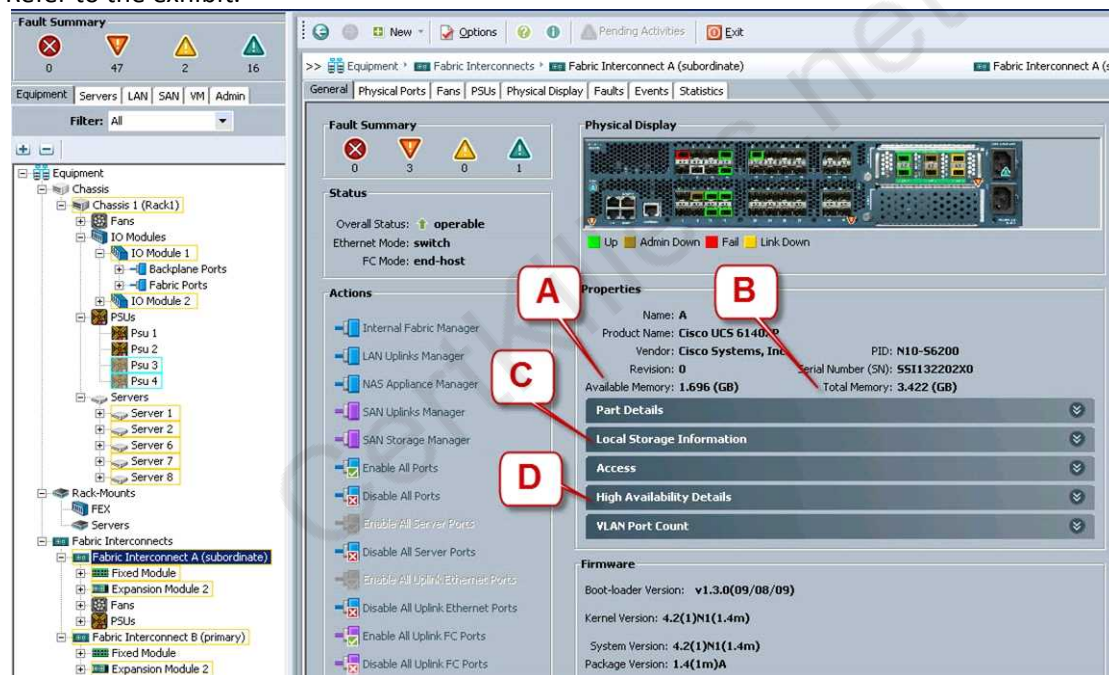
The Ethernet specification details several different fiber optic media types. What is the wire transmission speed for 100BASE-FX Ethernet?

- A. 10 Mb/s
- B. 100 Mb/s
- C. 1000 Mb/s
- D. 10000 Mb/s

**Answer: B**

**Question: 5**

Refer to the exhibit.



Where is the best place to see bootflash free space?

- A. A - Available Memory
- B. B - Total Memory
- C. C - Local Storage Information
- D. D - High Availability Details

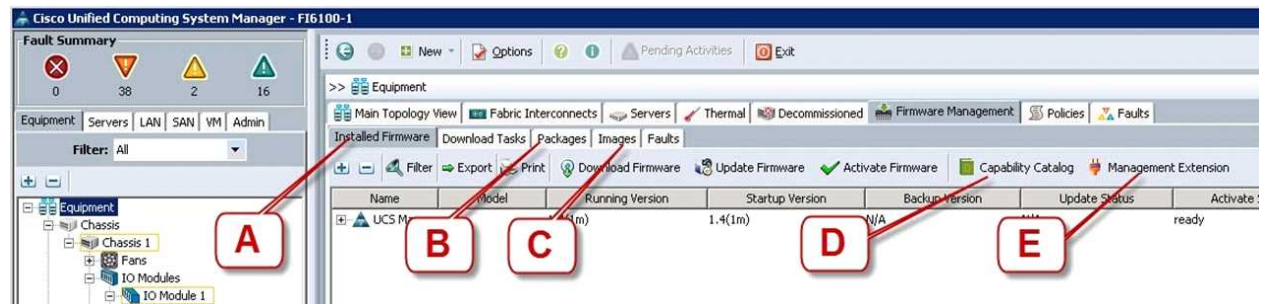
**Answer: C**

---

**Question: 6**


---

Refer to the exhibit.



Where is the best place to find the B200 BIOS version used in a specific Cisco UCS Manager version?

- A. A - Installed Firmware
- B. B - Packages
- C. C - Images
- D. D - Capability Catalog
- E. E - Management Extension

---

**Answer: B**

---



---

**Question: 7**


---

What is the wire transmission speed for 100GBASE-ER4 Ethernet?

- A. 100 Mb/s
- B. 1 Gb/s
- C. 10 Gb/s
- D. 100 Gb/s

---

**Answer: D**

---



---

**Question: 8**


---

Which two statements about PCIe are true? (Choose two.)

- A. The PCIe link is built around dedicated unidirectional couples of serial, point-to-point connections known as lanes.
- B. You can install a PCI Express x8 adapter into an x4 slot.
- C. The PCIe standard is a bus-based system in which all the devices share the same bidirectional, 32-bit or 64-bit, parallel signal path.

- D. The PCIe 1.0 standard doubles the transfer rate compared to PCIe 2.0.
- E. A link that is composed of four lanes is called an x4 link.

---

**Answer: AE**

---

---

**Question: 9**

---

Which three statements about FCoE are true? (Choose three.)

- A. Allows Fibre Channel and Ethernet networks to share a single, integrated infrastructure.
- B. Encapsulates Fibre Channel frames into Ethernet frames, which allows them to run alongside traditional IP traffic.
- C. Increases capital costs due to the difficulty to manage.
- D. Consolidates I/O traffic in the data center.

---

**Answer: ABD**

---

---

**Question: 10**

---

Which cable is used to access the command-line interface of a Cisco UCS 6120XP Fabric Interconnects?

- A. KVM cable
- B. console cable
- C. Ethernet cable
- D. SFP+ Ethernet transceiver cable

---

**Answer: B**

---

## Thank You for trying 010-151 PDF Demo

To Buy Latest 010-151 Full Version Download visit link below

<https://www.certkillers.net/Exam/010-151>

## Start Your 010-151 Preparation

**[Limited Time Offer]** Use Coupon “CKNET” for Further discount on your purchase. Test your 010-151 preparation with actual exam questions.

<https://www.certkillers.net>